



## Ljósmyndir 1935-1970, umslag 1

---

Bjarni Benediktsson – Þegar margar eins myndir eru í umslagi er aðeins ein skönnuð

Tekið af vef Borgarskjalasafnsins

---


[bjarnibenediktsson.is](http://bjarnibenediktsson.is)

Einkaskjalasafn nr. 360

Ljósmyndir

Askja 7-16, Örk 2

©Borgarskjalasafn Reykjavíkur

A black and white portrait of a man, Bjarna Benediktsson, from the chest up. He is wearing a dark suit jacket, a white collared shirt, and a dark tie with a small, light-colored pattern. His hair is dark and neatly styled. He has a slight smile and is looking slightly to the right of the camera. The background is a dark, solid color.

Einkaskjalasafn Bjarna Benediktssonar © Borgarskjalasafn Reykjavíkur



Einkaskjalasafn Bjarna Benediktssonar © Borgarskjalasafn Reykjavíkur



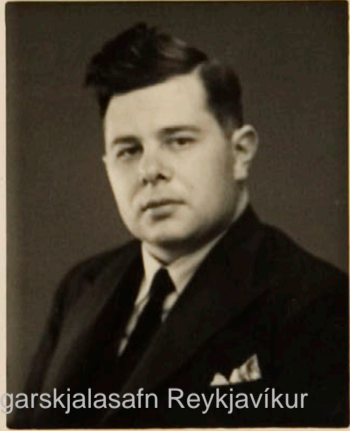
Einkaskjalasafn Bjarna Benediktssonar © Borgarskjalasafn Reykjavíkur



Einkaskjalasafn Bjarna Benediktssonar © Borgarskjalasafn Reykjavíkur



Einkaskjalasafn Bjarna Benediktssonar © Borgarskjalasafn Reykjavíkur



Einkaskjalasafn Bjarna Benediktssonar © Borgarskjalasafn Reykjavíkur





Einkaskjalasafn Bjarna Benediktssonar © Borgarskjalasafn Reykjavíkur