



Ferðir Mallorca 1958

Bjarni Benediktsson – Ferðir – Mallorca – Hótel Calamayor

Tekið af vef Borgarskjalasafnsins

bjarnibenediktsson.is

Einkaskjalasafn nr. 360

Stjórnmalamaðurinn

Askja 2-43, Örk 2

©Borgarskjalasafn Reykjavíkur

Génova y el Castillo de Bellver

Fot. kindel



MALLORCA

Einkaskjalasafn Bjarna Benediktssonar © Borgarskjalasafn Reykjavíkur



Carretera de la Calobra

Fot. Balear



Torrente de Pareys



Gánova y el Castillo de Bellver

Fot. kindel



Estallenchs

Fot. Balear

MALLORCA MALLORCA

Climo: Ideal de temperatura moyenne en els 25 degrés, en hivern, de 10° C. Media anual de 17° C.
 Climat: idéal de température moyenne en été 25 degrés, en hiver, 10 degrés. Moyenne annuelle: 17 degrés.
 An average temperature in Summer of 25° C. and in winter of 10° C. Annual mean temperature 17° C. makes an ideal climate.



Palma: Paseo Marítimo

Fot. Balear



Palma: Monumento al Rey Jaime I

Fot. Truyo

Publicado por la SOCIEDAD FOMENTO DEL TURISMO DE MALLORCA
 Publie par la (Islas Baleares) - ESPANA
 Published by the



MALLORCA, isla mayor de las Baleares, situada en el Mediterráneo occidental, a 440 millas de Gibraltar, 166 de Alicante, 140 de Valencia, 132 de Barcelona, 287 de Marsella y 172 de Argel; de 3.400 kms. cuadrados y una población de más de 350.000 habitantes. Su capital, la ciudad de Palma está hermanada por antiguos edificios y Monumentos civiles y religiosos, callejas de mucho carácter y los atractivos alrededores de Terreno, Bellver, Génova, C'as Catalá, etc.

MAJORQUE, la plus grande, des Iles Baléares, est située dans la Méditerranée Occidentale à 440 milles de Gibraltar, 166 d'Alicante, 140 de Valence, 132 de Barcelone, 287 de Marseille et 172 d'Alger. Sa surface est de 3.400 kms. carrés et sa population de 350.000 habitants. Sa capitale de l'île est embellie par d'anciens édifices, de beaux monuments civils et religieux, de curieuses ruelles et de séduisants faubourgs comme Terreno, Bellver, Génova, C'as Catalá, etc.

MAJORCA, largest of the Balearic Islands situated in the Western Mediterranean, 440 miles from Gibraltar, 166 from Alicante, 140 from Valencia, 132 from Barcelona, 287 from Marseilles and 172 from Algiers, measuring 3.400 square kilometres, and having a population of over 350.000 inhabitants. Its capital, the City of Palma is adorned by ancient buildings, lay and religious monuments, old streets of much character, and its has attractive surroundings of Terreno, Bellver, Génova and C'as Catalá.



Puerto de Sóller



La Cartuja de Valldemosa

Fot. Balear

MALLORCA

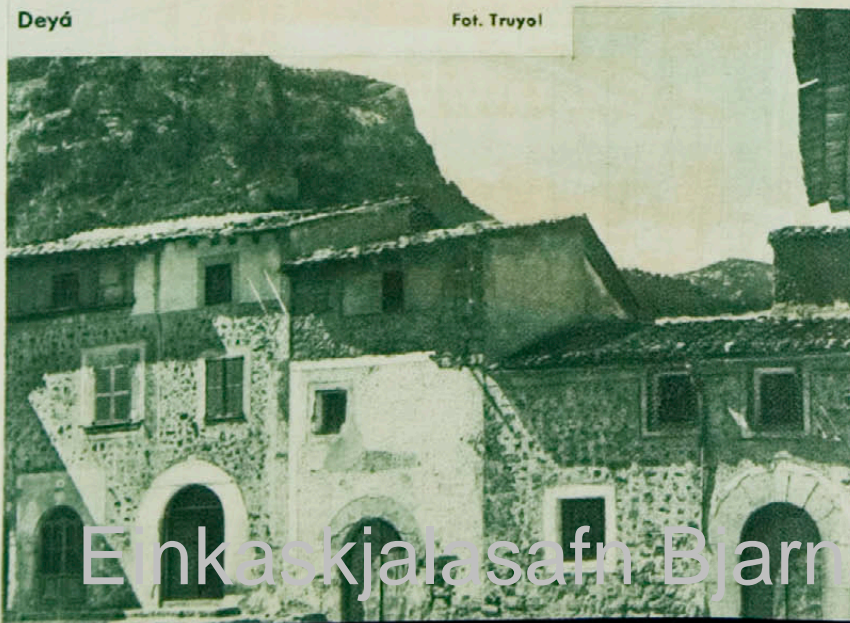


Palma: Claustro de San Francisco

Fot. Balear

PRINCIPALES EXCURSIONES

1. - Palma-Camp de Mar-Andraitx-Estallenchs-Bañalbufar.
2. - Palma-Valldemosa-Miramar-Deyá-Sóller-Puerto de Sóller.
3. - Palma-Inca-Lluch-Calobra-Torrente de Parey.
4. - Palma-Inca-Pollensa-Formentor-Alcudia.
5. - Palma-Manacor-Porto Cristo (cuevas).
6. - Palma - Manacor - Artá - Capdepera (Cuevas Artá) - Cala Rajada.
7. - Palma-Porreras-Felanitx - Cala d'Or-Santañy - Lluchmayor.



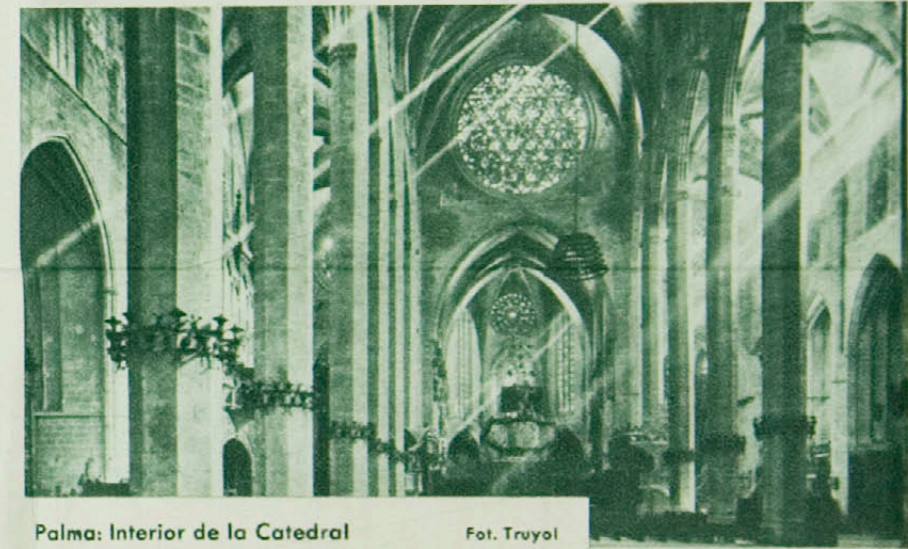
Deyá

Fot. Truyol



Playas de Paguera

Fot. Truyol



Palma: Interior de la Catedral

Fot. Truyol

INFORMACION

Para toda clase de información de tipo turístico sobre Mallorca, dirigirse por escrito a:

Pour toute information touristique sur Majorque, se diriger par écrit à:

For all kinds of informations about holidays in Majorca, apply in writing to:

SOCIEDAD FOMENTO DEL TURISMO
Paseo del Generalísimo Franco, 34-36
Teléfono 5310

o a la:
ou à:
or to:

OFICINA DE INFORMACION DE LA
DIRECCION GENERAL DEL TURISMO
Paseo del Generalísimo Franco, 38-40
Teléfono 2216

Torrente de Pareys



Einkaskjalasafn Bjarna Benediktssonar © Borgarskjalasafn Reykjavíkur

MALLORCA

HOTEL Calamayor



*Mens
Austriacs*

PALMA DE MALLORCA

ESPAÑA



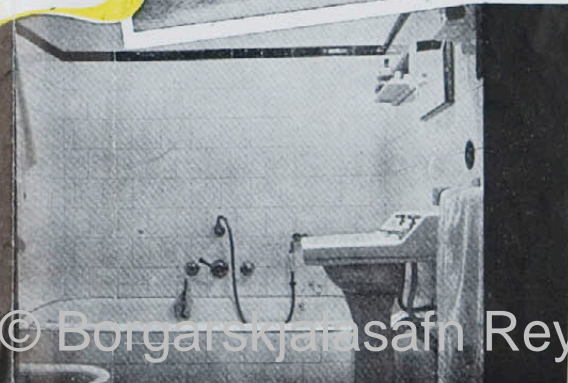
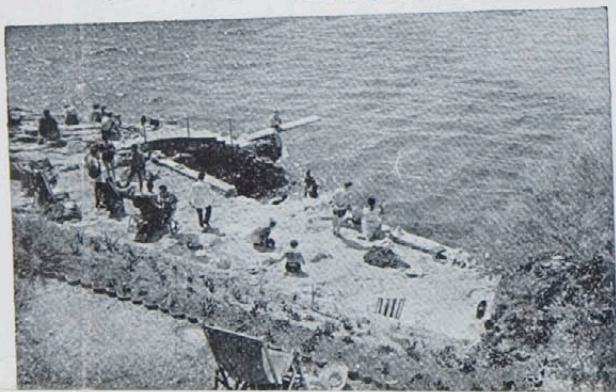
HOTEL Calamayor



Heisst Sie herzlich willkommen.





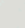

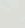
Es bietet Ihnen als erstes Hotel am Strande ausserhalb des Hafenbezirks jeden Komfort und persönliche Betreuung der deutschen Direktion, die ständig bemüht sein wird Ihren Aufenthalt so angenehm wie möglich zu gestalten. Seine bevorzugte Lage in der Bucht von Palma, grosse Gartenanlagen, Sonnenterrassen und **eigener Badestrand** haben dem Hotel CALAMAYOR seinen hervorragenden Ruf verschafft. Seine internationale Küche ist als erstklassig bekannt.

A. D. A. C. - Vertragshotel - Mitglied des SKAL Clubs



HOTEL alamayor

SIGNOS CONVENCIONALES

-  IGLESIAS - EGLISES - CHURCHES
-  MONUMENTOS DE INTERES ARTISTICO E HISTORICO.
-  MONUMENTS OF HISTORICAL INTEREST.
-  PRINCIPAUX MONUMENTS A VISITER
-  PATIOS MALLORQUINES
-  TYPICAL COURTYARDS (PATIOS).
-  "PATIOS" TYPIQUES



Mallorca

Grösste Insel der Balearen, schönste Insel im Mittelmeer, INSEL DER GLÜCKLICHEN.

Hier finden Sie wirklich Ruhe, Erholung und Naturschönheiten solcher Mannigfaltigkeit und reicher Färbung, die diese paradiesische Insel zur Lieblingsstätte der Maler aus aller Welt werden liess.

200 - 230 - 275 -

per personu todo incl.

HOTEL Calamayor



Einkaskjalasafn Bjarna Benediktssonar © Borgarskjalasafn Reykjavíkur
PALMA DE MALLORCA · ESPAÑA

LA SEMANA MALLORQUINA

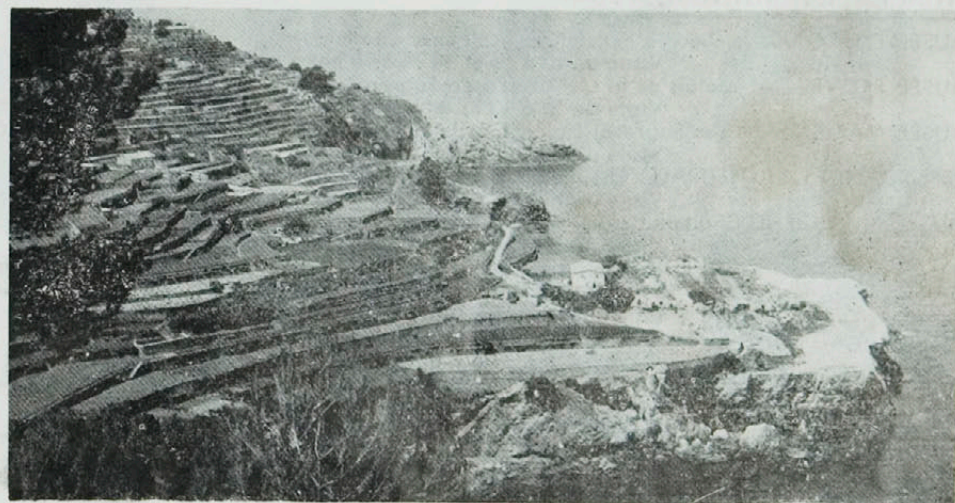
DEL 23 AL 30 DE MAYO DE 1958

ESPAÑOL

FRANÇAIS

ENGLISH

DEUTSCH



VISTA DE BAÑALBUFAR

FOTO BALEAR

Agencias de Viajes	6	Galgos	12
Autocares	10	Golfs Miniaturas	12
Aviones	8-9	Mapa de Mallorca	28
Barcos y Cambios	16	Monumentos y Museos	2
Barcos	5-6	Movies in English	17
Cabarets	20-21	Música Clásica	12
Cinemas y Teatros	17	Organismos oficiales	2
Correos	12	Plano de Palma	14-15
Ferrocarriles	6	Restaurantes	18-19
Frontón Balear	17	Taxis	28
Fútbol	12	Tenis	12
Galerías de Arte	17	Toros	12

PERFUMERIA - PERLAS DE MANACOR Y MAJORICA - TRABAJOS LABORATORIO
 FOTOGRAFICO PARA AFICIONADOS - REPORTAJES DE BODAS, COMUNIONES Y BAUTIZOS

HAWAII

MARQUES DE LA CENIA, 62 BIS Y LEONARDO ZAFORTEZA 2
 SPANISH AND FOREIGN PERFUMES - MANACOR AND MAJORICA PEARLS
 IF YOU ARE REALLY AN AMATEUR GIVE US YOUR FILMS TO DEVELOP

ORGANISMES OFFICIELS - OFFICIAL ORGANISATIONS

Douane	Veri, 12	1167
Hotel de Ville	Plaza de Cort	1900
Poste et Télégraphe	Gran Vía José Antonio, 6	1867
Déleg. d'Information et Tourisme	Paseo Sagrera, 9	2000
Sociedad Fomento del Turismo	Paseo Generalísimo, 34 - 36	6531
Gouvernement Civil	Gran Vía José Antonio, 4	4363
Commissariat de Police	Gran Vía José Antonio, 4	1221
Téléphone	Gran Vía José Antonio, 2	02 - 03 - 04 - 09
Gaz et Electricité (permanence)	Gen. Franco	7555
Aéroport Son Bonet	Pont d'Inca	30

MUSÉES ET MONUMENTS

MUSÉE EPISCOPAL: Archéologie, Peinture, Sculpture, Céramique
 Visite de 10 à 13 et de 16 à 18 heures. Entrée: 3 pesetas.
 MUSÉE PROVINCIAL: palais de la LONJA (Paseo Sagrera)
 Visite de 10 à 13 hs. et de 16 à 22 hs. - Entrée: 3 ps.
 MUSÉE MARITIME: (Paseo Sagrera) Collection de navires, armes, cartes de navigation, etc.
 Visite de 9 à 13 et de 16 à 19 heures. Entrée: 2'50 pesetas.
 DÉPENDANCES CATHEDRALE: Ornaments et Orfèvreries religieux.
 Visite de 10'30 à 12'30 et de 16'15 à 19 heures. Entrée: 5 pesetas.
 MUSÉE MUNICIPAL: Château de Bellver - El Terreno - Archéologie.
 Visite de 10 à 14 et de 16 heures jusqu'au coucher du soleil
 Entrée: 5 pesetas en semaine - 2 pesetas dimanches et jours fériés.
 MAISON MULET: (village de Génova), Céramiques, peinture, meubles majorquins, costumes régionaux. Visite toute la journée - Entrée: 4 pesetas.
 MUSÉE IMPRIMERIE GUASP: (Morey, 8) Xilographie, anciens procédés d'impression.
 Visite de 10 à 13 et de 16 à 18 heures. Entrée 3 pesetas.
 MANSION DE ARTE: (Apuntadores, 45) - Tous les jours de 9 hs. à 19 hs. - Entrée 4 ptas.
 Peintures anciennes et modernes - Eaux fortes de Goya.



ROCAS

Self drive cars
 Alquiler sin chofer
 Autovermietung
 Selbstfahrer
 Renault 4 cv. - Seat
 Biscuter 2 cv.
 Ford super luxe

VASCO DE GAMA, 7 TEL. 6396
 Casas en BARCELONA Y MADRID

Lencería Balear

Lingerie Fine
 Nappes Brodées
 Blouses Brodées



Créations de Paris

Gants et Bas
 Christian Dior
 Vestes et Manteaux
 Antilope



SAN NICOLAS. 27 - 29

TELEFONO 2775



VILLAMOR

DE PARIS

29 Rue Marbeuf - Ch. Elysées

Haute Couture Creations

Hair Dresser

Beauty Care

FRISEUR

SCHÖNHEITS INSTITUT



AVENUE JAIME III, 2 - (BORNE) - PALMA

WHO CAN RESIST?
 hand-crafted belts
 leather pocket-books
 smoking requirements
 cutlery of the finest quality
 and just the collar your dog needs

Porcel

Gran. Franco 90 (Borne)



Benediktssonar © Þorgarskjallasafn Reykjavíkur

A weekend - a week - a month
no matter how long you stay
LUGGAGE

is what you need - Also a new
Belt and Pocket Book



Profitez de votre séjour
pour acheter une de ces

VALISES

dont Palma a le secret
Luxueuses - Solides
à des prix imbattables

Ceintures — Portefeuilles

ESTABLECIMIENTOS VICTORIA

CALLE COLON, 31 — CALLE JAIME II, 82 — TEL. 1897

SAN NICOLAS, 36

Tel. 7616

Palma de Mallorca



HAND MADE JEWEL EMBROIDERIES

A CHEAP COPY CANNOT SATISFY YOU!
BE SURE YOU BUY AN ORIGINAL SIGNED

ODETTE

GUARANTEE OF A GOOD CUT & PERFECT MATERIAL

COMPANIA TRASMEDITERRANEA

Muelle - PALMA

Teléfono 7500

PALMA - BARCELONA:

Les bateaux quittent Palma et Barcelona tous les jours à 22 hs. pour arriver à 7.30 hs. environ EXCEPTE LES DIMANCHES

BARCELONA - PALMA:

The boats leave Palma and Barcelona every day at 10 p. m. and arrive at about 7.30 a. m. EXCEPT SUNDAYS

PRIX (PRICE): — 1 cl.: 360 — 2 cl.: 230 — 3 cl.: 185 Ps.

CARS: - 1.000 kgs. 750 ptas. - 1.500 kgs. 899 ptas. - 2.000 kgs. 1.152 ptas. - 2.500 kgs. 1279 ptas.

PALMA - IBIZA	Lun (Mon) 12 hs	Mer (Wednes) 12 hs	Ven (Fri) 12 hs
IBIZA - PALMA	Mer (Wednes) 9 hs.	Mer (Wednes) 24 hs	Dim (Sun) 9 hs

PALMA VALENCIA	Jeudi (Thursday)	19 hs.
VALENCIA - PALMA	Vendredi (Friday)	21 hs.

PALMA - IBIZA - VALENCIA:	Lundi (Monday)	12 hs.
VALENCIA - IBIZA - PALMA:	Mardi (Tuesday)	21 hs.

PALMA - BIZA - ALICANTE:	Vendredi (Friday)	12 hs.
ALICANTE - IBIZA - PALMA:	Samedi (Saturday)	21 hs.

PALMA - MAHON	Mardi (Tuesday)	21 hs.
MAHON - PALMA	Mercredi (Wednesday)	21 hs.

PALMA - CIUDADELA:	Jeudi (Thursday)	21 hs.
CIUDADELA - PALMA:	Mardi (Tuesday)	21 hs.

CIUDADELA - ALCUDIA:	Samedi (Saturday)	10 hs.
ALCUDIA - CIUDADELA:	Lundi (Monday)	12 hs.

ZIM ISRAEL NAVIGATION CY

AGENT: AEROMARITIMA

Generalísimo Franco, 39 - Tel. 6673

FROM PALMA to Gibraltar and NEW YORK

First class. : dollars 320 to 390 — Tourist : dollars 180 to 305

S. S. ISRAEL July 2 — August 13 — September 24 — November 5 — December 17

S. S. ZION June 11 — July 23 — September 2 — October 15 — November 26

AMERICAN EXPORT LINE, INC.

AGENT: SCHEMBRI LTD.

Av. Antonio Maura 19 - Tel. 1417 - 1074

Fast luxury passenger service

from MEDITERRANEAN PORTS to NEW YORK by famous liners

«Independence» and «Constitution»

Also MEDITERRANEAN CLUB SERVICE by the famed «4 ACES»

For information and reservations apply to Agents

Next Sailings To NEW YORK From

Barcelona:

Algeciras:

«EXETER» May 26 th.

«CONSTITUTION» May 25 th.

«EXCALIBUR» June 7 th.

«INDEPENDENCE» June 14 th.

AGENCIAS DE VIAJES

Aerotour
 Tourist Romea
 Aeromar Expreso
 Baixas
 Cía. Hispanoamericana de Turismo
 C. Y. R. A. S. A.
 F. R. A. M. Ltda.
 Iberia
 Internacional Expreso
 I. C. A. B.
 Mallorca
 Marsans
 Meliá
 Pier Busseli
 Rumbo
 Tober
 Wagons Lits/Cook
 Ultramar Express S. L.
 Viajes Galicia, S. L.
 Bakumar

Tel
 Avda. Jaime III, 8 7111
 Avda. Jaime III, 8 7111
 Plaza Weyler 4454 - 4455
 Soledad, 16 3704 - 6254
 Paseo de Generalísimo 1322
 General Goded, 27 1076
 Arabí, 16 bis. 8746
 Paseo del Generalísimo, 48 2222 - 3790 - 3663
 General Goded, 37 3030
 Pelaires, 103 4960
 Avda. Antonio Maura, 26 3512
 Paseo del Generalísimo, 26 1633 - 6353
 Paseo del Generalísimo, 74 4006 - 5311
 Victoria, 22 2276
 Plaza de Cort 4261
 Paseo de Sagrera 4098
 Paseo del Generalísimo, 5 4614 - 2129
 Enrique Alzamora, 3 3682
 Plaza Gomila 3361
 Avda. A. Maura, 76 1526 - 3935



	DEPARTURE	RETURN	PRICE 1 CL.	RETURN 2 CL.
PALMA - SÖLLER	8 13 - 16 - 20	6.45 - 9.20 14.15 - 18	32.—	24.—
PALMA - INCA	8 - 8.40 - 12.30 14.25 - 14.45 - 18.30 - 19.20	6.15 - 7.55 - 8.40 13 - 14.30 - 17 - 18.25 - 21	24.70	16.80
PALMA - ARTA	8 14.25	6.35 16	60.—	41.30
PALMA - MANACOR	8 - 12.30 14.25 - 19.20	6.35 - 7.30 17.10	46.75	31.50
PALMA - SANTANYI	9.20 14.30 - 19.20	7.30 12.45 - 17.30	45.50	30.70
PALMA - FELANITX	9.25 14.15 - 19.15	7.30 12.30 - 17.30	43.—	29.—
PALMA - LA PUEBLA	8.40 14.45 - 18.30	7 12.10 - 17.35	36.—	24.50

NATIONAL HELLENIC AMERICAN LINE

LUXURY PASSENGER SERVICE

FROM BARCELONA to HALIFAX and NEW YORK

s/s QUEEN FREDERICA (ex. ATLANTIC) 21.000 T.:

May 28 - June 24 - July 23

FROM BARCELONA

to GENOA - NAPLES - MESSINA and THE PIREE:

May 19 - June 15 - July 13

AGENT: HIJOS DE M. CONDEMINAS
 JAIME II, 94 - TELEFONO 3137

SUEDE JACKETS

Well-fitting - Top quality

Newest shades

Exceptional value

VESTES DE DAIM

Une coupe irréprochable

Les teintes de saison

Une qualité exceptionnelle

WILD - LEDERJACKEN

TAILOR - TAILLEUR - SCHNEIDER

BROSSA, 9 - STO. DOMINGO, 8 - TEL. 1546

Buy Bonet's embroidery

The traditional store for guaranteed

hand made embroidery

Large selection - Fair prices

See famous private collection of

masterpieces - English spoken



La maison qui a rendu fameuses les

broderies de Majorque

Visitez son musée unique au monde

Travail entièrement fait à la main

Chemises sur mesures - Mœuchoirs

On parle français

BONET

SAN NICOLAS, 15-TEL. 2117

Bewundern Sie in diesem Haus die weltberühmten Stikereien von Mallorca

Gaby Couture

WILL PRESENT A

FASHION SHOW AT TITO'S

MAY 31 st. - JUNE 1 st.

Reservations can be made

at Tito's Plaza Gomila - Tel. 1044

PALMA DE MALLORCA

Salon
 JOVELLANOS, 6-8

IBERIA

AVENIDA CONDÉ SALIENT, 12 - TELÉFONO 5200

PALMA-BARCELONA - (50 Minutos) - Precio : 280 Ps. Ida y Vuelta : 504 Ps.
Diario : 8'05-10-11-12-14'45-15'15-16'15-17'15-18'10-19'15-20'15.
Sábados : 8'45-Lunes : 9'45.

BARCELONA-PALMA

Diario: 8'30-9'30-12'30-13'30-14'45-15'45-16'45-17'45-18'45-19'45-20'45
Miércoles y Sábados : 18'30.

PALMA-MADRID (2 Horas) Precio : 750 Ps. - Ida y Vuelta : 1.350 Ps.

Diario excepto Domingo : 9-17'45 - Domingo : 20'50

MADRID-PALMA - Diario excepto Domingos : 15 - Domingo : 19'10

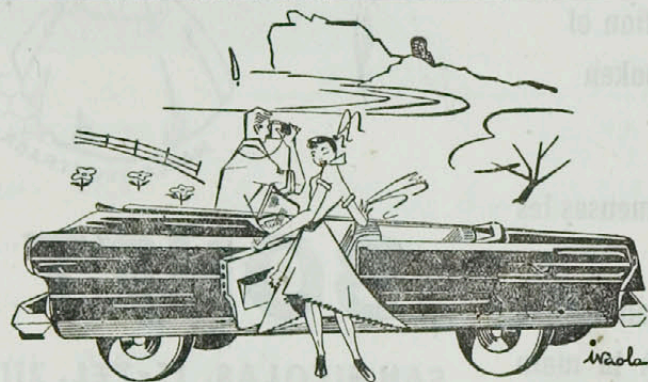
PALMA-VALENCIA (1-Hora) Precio : 375 Ps. - Ida y Vuelta : 675 Ps.

Diario : 9-17'10

VALENCIA-PALMA - Diario : 10'15 - 15'30

PALMA-LONDRES - Precio : 2.930 Ps. - Ida y Vuelta : 5.382 Ps. - Viernes : 10'15

LONDRES-PALMA - Viernes : 15'50



**Combinez votre voyage
avion avec une voiture
sans chauffeur
550 Pts. par jour
sans limitation de kms.**

**Combine your air travel
with a self drive car
550 Pts. per day
No mileage charge**

**Automóviles PONS - Elcano, 15 (Son Armadans)
Alquiler coches sin chofer**

Teléfono 5127

AVIACO

CALLE CONQUISTADOR, 42 - TELEFONO 7667

PALMA-BARCELONA - (50 Minutos) - Precio: 280 Pesetas

Diario : 8'55-9'10-12-Domingo : 21'15

BARCELONA-PALMA

Diario : 10'35-20'15-20'30-Domingo : 8'10

PALMA-ALGER - Precio (Prix) : 8.900 Frs. français

Domingo (Dim.) : 14'30 (Arr. 15'40)-18'10 (Arr. 19'25)

ALGER-PALMA - Domingo (Dim.) : 10 (Arr. 11'20) - 16'20 (Arr. 17'45)

PALMA-MARSEILLE - Precio (Prix) : 10.000 Frs. français

Domingo (Dim.) : 9'30 (Arr. 11'15) - 12 (Arr. 13'35)

MARSEILLE-PALMA - Domingo (Dim.) : 11'50 (Arr. 13'35) - 15'35 (Arr. 17'25)



AND DON'T FORGET SHE LOVES FLOWERS...

LA ROSALEDA

AVDA. JAIME III, 15 (BORNE)

OFFREZ LUI LES FLEURS QU'ELLE AIME



OPEN SUNDAY MORNING UNTIL 1 P.M. - OUVERT LE DIMANCHE MATIN JUSQU'A 13 HS.

AIR FRANCE PLAZA SANTA CATALINA THOMAS, 35 - TELEFONO 2594

PALMA-PARIS (Direct) Prix: 21.300 Frs. - Aller et Retour: 38.340 Frs.

Lundi-Vendredi-Dimanche : 18'15 (Arriv. 21)

PARIS-PALMA (Direct)

Lundi-Vendredi-Dimanche : 13'50 (Arriv. 16'50)

BRITISH EUROPEAN AIRWAYS AVDA. JAIME III, 6 - TEL. 5339

PALMA-LONDON (Direct) - Price: L. 26.1 - Return : L. 46.18

Daily : 3'35 p. m. (Arriv. 7'05)

Monday-Saturday-Sunday : 7 a. m. (Arriv. 10.30)

LONDON-PALMA Daily : 11.35 a. m. (Arriv. 2.55 p. m.)

Monday-Saturday-Sunday : 2.55 a. m. (Arriv. 6'15)

PALMA-MANCHESTER (Direct.) Price : L. 28.19 - Return : L. 52.3

Tuesday-Thursday-Sunday : 2.25 p. m. (Arriv. 6.20)

MANCHESTER-PALMA-Tuesday-Thursday-Sunday : 10.05 a. m. (Arriv. 1.45 p. m.)

SABENA

CALLE CONQUISTADOR, 42 - Teléfono: 3002

PALMA-BRUXELLES (Direct) - Prix: 2.935 Frs. B. Aller et Retour : 5.285 Frs. B.

Jeudi : 16.45 (Arriv. 20.45) - Dimanche : 10.35 (Arriv. 13'55)

BRUXELLES-PALMA - Jeudi: 11.40 (Arriv. 15.50) - Samedi : 15'10 (Arriv. 18.30)

K. L. M.

CALLE PELAIRES, 109 - Tel. 6969

PALMA-AMSTERDAM (Direct.) - Prix : 67 dollars USA - Aller et Retour: 120.60

Mercredi et Samedi (Wednesday and Saturday): 16.45 (Arr. 21.55) Escales à Bruxelles

AMSTERDAM-PALMA - Mer et Sam. (Wednes. and Satur): 10'30 (Arriv. 15.40)

SWISSAIR

CALLE CONQUISTADOR, 19 - TELEFONO 3932

PALMA-GENEVE - (Direct) - Prix: 232 Francs Suisses - Aller et Retour : 418

Tous les Dimanches (Every Sunday) : 10'10 (Arr. : 12'45)

GENEVE-PALMA - Tous les Samedis (Every Saturday) : 15.55 (Arr. : 18.35)



GENEVE

**MAISON DE TOUT PREMIER RANG AU BORD DU LAC
L'AMPHITRYON - LE RESTAURANT DE GRANDE CLASSE**

FIRST CLASS HOTEL ON THE LAKE

THE AMPHITRYON - THE RESTAURANT WITH JUST EXCELLENT FOOD

**HORAIRES VALABLES POUR LES JOURS DE SEMAINES
SERVICES SUPPLEMENTAIRES LES DIMANCHES ET JOURS FÉRIÉS**

AUTOBUS PALMA - C'AS CATALA

1er. Dep. de Palma Plaza de la Reina (Borne) : 6 hs. — 1er. Dep. Ca's Catalá : 6.30
Dern. Dep. de Palma : 23 hs. — Dep. de Ca's Catala : 23.25
Cadences : de 6 à 8 : ttes les 30 ms. — de 8 à 10 : ttes les 20 ms.
de 10 à 14 : ttes les 15 ms. — de 14 à 17 : ttes les 20 ms.
de 17 à 21 : ttes les 15 ms. — de 21 à 23 : ttes les 30 ms.

AUTOCARS

Palma - Paguera - Andraitx	Depart: 9 - 16 - 20'30 Ret.: 7'30 - 18'30	Via Roma, 7
Palma - Puerto - Pollensa	Depart: 17 Ret.: 7'45	Railway Station
Palma - Alcudia	Depart: 18 Ret.: 8	—
Palma - Felanitx	Depart: 8'15-15'15 - 19'30 Sa. 17 Ret.: 8 - 13 - 18	—
Palma - Manacor	Depart: 17 - 19'30 Ret.: 8 - 13'45	—
Palma - Arta - Cala Ratjada	Depart: 17 Ret.: 7'15	—
Palma-La Puebla	Depart: 16'30 Ret.: 8'30	—
Palma-Santanyí	Depart: 8'30 - 14'30 - 19 Ret.: 7'50 - 12'30 - 17	Avda. Alj. Ross. 45 BAR-AVENIDA
Palma - Lluchmayor	Depart: 8'30-12-14'30-19 D. 22 Ret.: 7'45 D. 8'30-13'40-18	—
Palma-Campos	Depart: 8'30 - 14'30 - 19 Ret.: 7'50 - 13 - 17'30	—
Palma-Salinas	Depart: 8'30 - 19 Ret.: 12'15	—
Palma-Arenal	Depart: 7'30-9-10-12-13-14'15-15'30-16'30-18-19-20-21 Ret.: 7-8-9'30-10'30-12'30-13'30-15-16-17-18'30-19'30-20	—
Palma-Valldemosa-Deya	Depart: 14'30 Ret.: 7	Calle 31 de Diciembre BAR MONUMENTAL
Palma-Esporlas.	Depart: 12 - 14'30 - 18'30 Ret.: 7'15 - 8'30 - 14	—
Palma-Galilea	Depart: 14'30 Ret.: 7'30	—

AUTOBUS PALMA - MOLINAR - COLL - CA'N PASTILLA

1er. Dep. de Palma Av. A. Rosselló - Bar COMAS - 6 hs. — 1er. Dep. de C'an Pastilla : 7 hs.
Dern. Dep. de Palma : 22 — Dern. Dep. de C'an Pastilla : 21'30 hs.
Cadence : toutes les 20 minutes de Palma - ltes. es heures de Ca'n Pastilla.

AUTOBUS PASEO MARITIMO - PORTO PI

1er. Dep. Pl. Pio XII : 6.30 — 1er. Dep. Porto Pi : 6.45
Dern. Dep. - : 22.20 — Dern. Dép. - : 22.40
Cadences : de 6.30 à 8 : ttes les 30 ms. — de 8 à 10 : ttes les heures
de 10 à 14.20 : ttes les 20 ms. — de 15 à 17 : ttes les heures — de 17 à 22.20 : ttes les 20 ms.

Perfumería Inglesa

ALL THE PERFUMES OF

Lancôme - NINA RICCI - Le grain - carven

Lanvin - Molineux - WORTH - Dana - CHANEL - GUERLAIN

ROBERT PIGUET - MYRURGIA - MARCEL ROCHAS

JEAN PATOU



Santa Eulalia, 32

(Parking)

HAND EMBROIDERIES

BRIDGE & TEA SETS
HANDKERCHIEFS
DINNERSETS
NAPKINS
TOWELS
BLOUSES



SERVICES DE TABLE
NAPPES BRODÉES
SERVICE A THÉ
BLOUSES BRODÉES
MOUCHOIRS
PULLOVERS

MIRADOR

SANTO DOMINGO
CONQUISTADOR 9



Caballeros y Señoras

Tailleur

Hombres et dames
livraison rapide

Tailor

Gentlemen and Ladies
quick delivery

Herren und Damen

Schneider

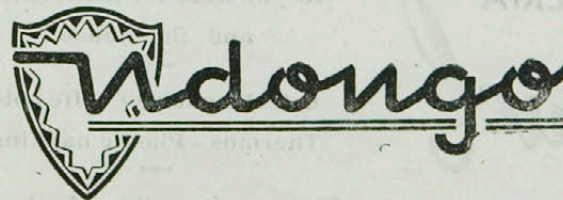
Man spricht Deutsch

On parle français

English spoken

San Nicolás 40
TELEFONO 1087

shoes that put elegance on a new footing



CALZADOS DE LUJO

C, SAN NICOLAS, 21

des chaussures élégantes et légères à la dernière mode

Englishman teaches English by most modern method. Also undertakes translations Spanish - French - English. Typing and copying. Please apply TURNER - Pensión Jardín, Calle Cavallería - Tel. 4813

BORNEO

Conquistador, 36 - Fashion show every TUESDAY from 5 to 6 p.m. - Free

MUSICA CLASICA

Museo Marítimo (Paseo Sagrera) - Miercoles y Viernes a las 7'30 tarde. Ent. 15 pts.

GOLFS MINIATURAS

Calamayor en face de (in front of) hotel La Cala
Plage de (Beach of) Camp de Mar

REAL MALLORCA TENIS CLUB

Calvo Sotelo en face (in front of) Residencia Marblau - Tel. 2783
8 courts - Prix à la journée (Price per day): 25 ps. - Bar.

COLISEO BALEAR

Domingo 25 Mayo a las 5'30 - Novillada para Trianero - Mondeño - Vazquez II
Despacho y Localidades : Bar Madrid - Teatro Lírico - Bar Rosales

FUTBOL

LUIS SITJAR Domingo, día 25 Mayo a las 5 tarde: Mallorca - Mestalla
GALGOS - COURSES DE LEVRIERS - GREYHOUND RACES

Camino de Jesús - Tel. 2238 - Oficinas 1896

Every day except Mon. - Wednes. - Frid. at 4 p.m. - Sun. at 10'30 a.m. - Betting

POSTE CENTRALE - HEURES D'OUVERTURE - LEVÉES

Télégrammes : Jour et nuit

Timbres : 9 hs. à 21 hs. - les Dimanches : de 10 hs. à 13 hs.

Poste Restante : 9 hs. à 13'30 hs. - 16 hs. à 20'30 hs.

Recommandés pour l'étranger : 9 hs. à 13 hs. - 17 hs. à 19 hs.

Etiquettes Vertes : de 9 hs. à 13 hs.

Mandats Postaux : pour les versements de 9 hs. à 13 hs. et de 16 hs. à 18 hs.
pour les paiements de 9 hs. à 13 hs.

Mandats Télégraphiques : de 9 hs. à 13'30 hs. et de 15 hs. à 20'30 hs.

Heures de levées : par avion toutes les 15 minutes de 4'30 à 21 hs.

toutes les heures de 21 hs. à 1 heure - par bateaux à 20 hs. dernière limite.

FERRETERIA Y DROGUERIA

San Miguel

SAN MIGUEL, 34 Y 36 - TELEFONO 2823

All you need for the kitchen
and the house

—
Latest models of coffe pots

Thermos - Plastic napkins

—
Fixtures in coloured plastic
and metal

THE INCOMPARABLE

Rolex Datejust... now...

with the

"ciclops eye"



The Rolex Oyster Perpetual Datejust is a triumph of Swiss watchmaking. It incorporates all the improvements and inventions developed by Rolex in over 50 years technical leadership.

The famous Swimproof Oyster case perfectly protects it against all injurious elements - water, dust, damp and perspiration.

Silently selfwound by the "rotor" Perpetual mechanism, the Datejust is entirely automatic.

The date of the month, shown in a window on the dial, is magnified two and a half times by the ingenious "Ciclops Eye" crystal for easy readability.

The Datejust is a "Rolex Red Seal" Chronometer with Official Timing Certificate awarded by a Swiss Government Testing Station bearing the coveted distinction, "Especially Good Results".

ROLEX

Sole distributor

RELOJERIA ALEMANA

40 COLON ST.



We offer today in Palma
TWO WORTHWHILE EXCURSIONS

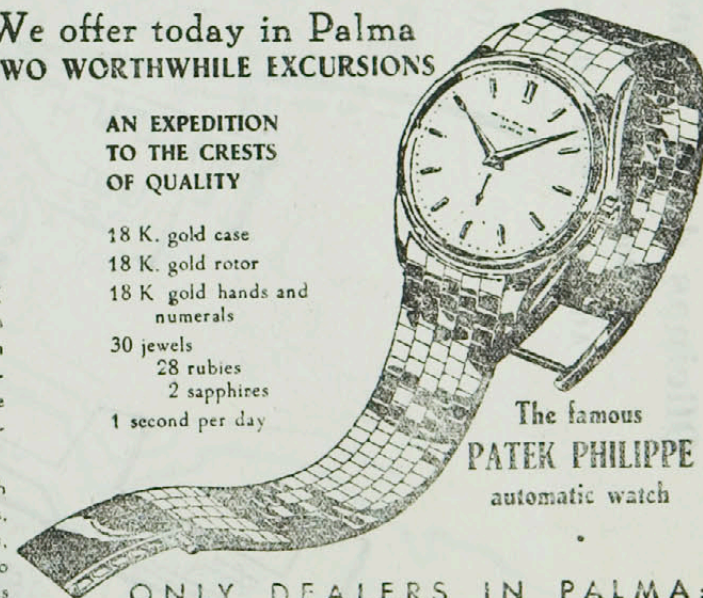
A JOURNEY INTO THE PAST

Since 1839, PATEK PHILIPPE has preserved a detailed "pedigree" of each watch made in its workshops, along with the name of the purchaser. An enormous library!

Travelling back through the pages of these registers, one finds History: kings, queens, emperors, and also such illustrious Americans as Vanderbilt, Dupont, Rockefeller, Roosevelt, Ford, Packard.

AN EXPEDITION TO THE CRESTS OF QUALITY

18 K. gold case
18 K. gold rotor
18 K. gold hands and numerals
30 jewels
28 rubies
2 sapphires
1 second per day



The famous
PATEK PHILIPPE
automatic watch

ONLY DEALERS IN PALMA:

RELOJERIA ALEMANA 40 COLON ST.

Oficinas de la Semana Mallorquina

Dos de Mayo 72 - El Terreno
Atlante - San Felio, 25 - Teléfono 6110



MONTRES
HAUTE QUALITÉ

HIGH PRECISION
WATCHES

OFFICIALLY
CERTIFIED CHRONOMETERS



PATEK PHILIPPE



ROLEX WATCH

ONLY DEALERS

SEUL CONCESSIONNAIRE

COLÓN, 40

RELOJERIA ALEMANA

ph 2917

SECOND HAND ENGLISH BOOKS FROM 5 PESETAS

LIBRERIA DE LANCE

CALLE OLMOS, 119 - BIS

THE "PENGUIN" SERIES AT 10 PTS. EACH (THRILLERS AND FICTION)

CONSULATS

		Téléphone
Argentine	Avda. Alejandro Rosselló, 4	2160
Belgique	Santo Domingo, 22	2221
France	General Mola, 43	4100
Alliance Française	San Felio, 11 bis	4101
Grèce	Marqués de la Cenia, 49,	3992
Angleterre	José Tous Ferrer, 28	2085
British Club	Calle Bosque, 2	
Nicaragua	Calle San Nicolás, 25	3122
Italie	Vía Roma, 86	1116
Portugal	Salud, 9	2099
Suède	San Bartolomé, 23	1957
Norvège	Avda. Antonio Maura, 19	1417
Danemark	Avda. Antonio Maura, 19	1417
Hollande	San Jaime, 65	1074
Bresil	Balmes, 57	5531

BANQUES - BANKS

Ouvertes (Open) : 9 - 13 hs.

		Téléphone
Banco de Bilbao	Plaza Virgen de la Salud	5400
"	Paseo del Generalísimo, 35	5647
"	Colón, 23	5730
Banco Central	General Goded, 67	1500
Crédito Balear	San Bartolomé, 40	2021
Banco de España	Jaime II, 51	2605
Banco Español de Crédito	Sindicato, 184	3460
"	Sindicato, 10	4603
Banco Hispano Americano	Plaza España, 40	5737
"	San Miguel, 17	4805
Banca March	Sindicato, 211	1431
Banco de Santander		

CHANGES - CURRENCY - GELDWECHSEL

100 francs français	10,00 pts.	100 portugisische taler	135,16 Pts
100 francs belges	84,00 >	1 schwedische krone	8,11 >
100 francs suisses >	970,31 >	1 daenische krone	6,08 >
100 hollaendische gulden	1.105,26 >	1 deutsche mark (Schein)	10,00 >
100 liras italiennes	6,75 >	1 mexikanischer peso	3,10 >
1 livre sterling	117,60 pts	100 Brasilianische cruzeiros	55,00 >
1 dollar U. S. A,	42, >	1 norwegische krone	5,88 >

NE QUITTEZ PAS MAJORQUE SANS VOIR LA GALERIE DANUS - ACHETEZ UN JOLI PAYSAGE DE L'ILE. CE SERA VOTRE PLUS BEAU SOUVENIR. MONTREZ CET EXEMPLAIRE ET VOUS AUREZ UNE REDUCTION SPÉCIALE.



Stationery
Little Frames in Leather
of Various Colours a Speciality



Calle Cadena, 11 - Between Plaza Cort and Plaza Santa Eulalla

TEATROS Y CINEMAS

PRINCIPAL - Pl. Weyler, 2 Tel. 3346 :

Jamaica - Prox. Compañía Regional «ARTIS»

LIRICO - P. Libertad Tel. 2749 : Antonio Molina

Prox. Estreno día 27 de Mayo : Carlos su tía y la otra

BALEAR - Zanoquera s/n Tel. 1255 : Jamaica

Prox. Estreno día 27 de Mayo : Carlos su tía y la otra

BORN - Paseo Gral. Franco, 31 Tel. 1370 : Los Carnets del Mayor Thompson

Prox. Estreno día 27 de Mayo : Programa no comunicado

AUGUSTA - Conde Sallent, 2 Tel. 1888 : Maruzella

Prox. Estreno día 27 de Mayo : La guerra empieza en Cuba

ASTORIA - Navarra, 13-15 Tel. 4163 : 5 Pistolas

Próx. Estreno día 27 de Mayo : Tu eres música

AVENIDA - Av. A. Rosselló 124 - Tel. 3142 : 5 Pistolas

Próx. Estreno día 27 de Mayo : Tu eres música

RIALTO - San Felio, 9 Tel. 1245 : Sangre en el Asfalto

ORIENTAL - Sindicato, 197 Tel. 1627 : Gemelas en apurvs

MOVIES IN ENGLISH

RECINA - Tte. Mulet (El Terreno) Shows at: 6'30 - 8'30 and 10'30 p. m.

Tuesday May 27 only : Scotland Yard

Thursday May 29 only : Shoot First (Joel Mc Crea - Evelyn Keyes)

GALERIAS DE ARTE - GALERIES D'ART

QUINT - Pas d'en Quint - Tel. 3780 - Pinturas de Daniel Aspachs Georges

DANUS - Danús, 3 - Tel. 1285 - Paisajes de Mallorca

COSTA - Conquistador, 32 - Tel. 1839 - Oleos de John Ulbricht

BELLAS ARTES - Conquistador, 29 - Oleos de Juan Calafat

Anglo American Lending Library

Latest Fiction and Non-Fiction

Childrens Books

Livres Français en Location

Casa PLANAS

Plaza Gomilla

Frontón Balear

Jai - Alay

EV. DAY - TS. LES JS.

18 HS. - 21.30 HS.

22.30 HS. - 1 H.

Paseo Mallorca

Tel. 2535



BARS * RESTAURANTS

BELLVER, Plaza Gomila, 9 (Terreno) - Cuisine au beurre et à l'huile
 CANTABRICO - Calvo Sotelo, 304 (Terreno) - Hors Catégorie - Nombreuses Spécialités
 CANTINA - Mollet - Cuisine espagnole - Spécialité: Fruits de Mer (Sea food)
 CELLER CATALAN, General Mola, 32 - Cuisine espagnole - Snack-Bar - Fruits de mer
 CELLER PAYES, Felipe Bauzá, 6 - Cuisine majorquine - Spécialité: Steak
 CELLER CA'N AMER, Inca (28 Km.) - Cuisine majorquine - Spécialité: Cochon de Lait
 CELLER INQUENSE - Font y Monteros, 27 - Cuisine majorquine - Spécialité: Porc grillé
 CHEZ MATIAS, Calvo Sotelo, 184 (El Terreno) - Cuisine espagnole
 CIRCULO MALLORQUIN. Conquistador, 29 - Cuisine espagnole - Menu à 30 ps.
 DOLLAR, Plaza de Weyler, 19 - Cuisine espagnole - Snack-Bar - Tapas
 EL PATIO - Calle Gomila, 5 (El Terreno) - Restaurant Hors Catégorie - Nombreuses Spécialités
 EL PUERTO, Calle de Sagrera, 11 - Cuisine au beurre
 EL QUIJOTE, Calvo Sotelo, 336 (Porto-Pi) - Cold Buffets
 LLABRES, Calvo Sotelo, 244 (Terreno) - Spanish Restaurant
 MAM'S, Calvo Sotelo, 167 - (Terreno) American Snack-Bar
 NEPTUNO (Porto Cristo) - Restaurant Espagnol - ouvert les Mercredis et Dimanches.
 NICO - BAR - Calvo Sotelo, 216 (Terreno) - Le Plat du Jour comme en France
 ORIENTE-Gen. Franco (Borne)-Restaurant Espagnol Hors Catégorie
 TEBAS, Navarra, 27 - Cuisine espagnole
 TETUAN, Pelaires, 105 - Danish Snack-Bar - Tapas
 TIROL - Apuntadores, 15 - German Snack-Bar - Tapas

LE TRITON RESTAURANT

FRESH LOBSTER
EVERY DAY

CHICKEN - CURRY
A SPECIALITY



Estanco, 5 - Teléfono 7784

Come and fish for your lobster
and dance while you dine

Restaurant Sa Cova

Hotel Nacional
speciality of roast chicken

PASEO MARITIMO TEL. 3732 y 3181

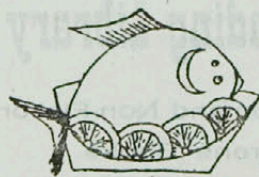
18

SPECIALITES ESPAGNOLES
SPANISH COOKING AT ITS BEST

RESTAURANTE

MAGANET

Plaza San Antonio, 3 - Teléfono 1046
CUISINE AU BEURRE - SA PAELLA SUR COMMANDE



FRESH LOBSTER
SEA FOOD

Restaurant
NEBRASKA

Calle Consignatarios Schembri, 10
Plaza Gomila (El Terreno) - Tel. 4754

BARS * RESTAURANTS

PUERTO DE SOLLER

Cuisine soignée
Spanish and Continental dishes

HOTEL EDEN

RESTAURANT - BAR

COME AND LISTEN TO JOE RAY



BRUSELAS

LE BAR BELGE DE PALMA
ESTANCO, 2 «Borne»

Lechería

Camino de Génova, 133 SAN AGUSTIN

Tel. 7464

Milk - Butter - Yaourt

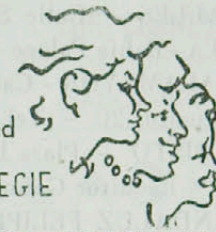
Lait - Beurre - Yaourt

A l'arrêt de l'autobus - At the bus stop

NORMA

PAT and

MAEGIE



Bar

Ole

AMERICAN
FR. 6 P.M.

WHERE THE FUN BEGINS
CALVO SOTELO. 179 TERRENO

A wonderful way to spend an evening
Real English tea with toast
Snacks

BAR MONTECARLO

(IN FRONT OF HOTEL VICTORIA)
CALVO SOTELO, 108 - EL TERRENO
Dans un cadre entièrement neuf
C'est le bar le plus original

ALQUILER APARTAMENTOS AMUEBLADOS
TODO CONFORT ESTANCIA MINIMA 3 DIAS

Jardines Piscina
Motels de Palma - Nova

Bar - Restaurante - Colmado
APPARTEMENTS MEUBLÉS TOUT CONFORT
MINIMUM 3 JOURS

REINA BAR

Chez les Parisiens

LES VRAIS CROISSANTS
CAFE CREME

AMUSES GUEULES (TAPAS)

SNACK - BAR

Pl. de la Reina, 5 Tel. 1332

CABARETS - TYPICAL DANCES

CALIPSO - Apuntadores, 15 - Baile 9 noche - (Sábados y Domingos 7 tarde)
 CASABLANCA - Plaza Lonja, 9 - Tel. 2971 - Patio Andaluz
 CASA VALLES - Calle Socorro, 14 5- Tel. 4246
 EL PIRATA - Bahía Palace - Tel. 5100 - Floor show - Attractions
 GOLF CALAMAYOR - Calamayor
 IBIZA - Dameto, 20 - Tel. 6903
 MONTECRISTO - Plaza Lonja - Patio Andaluz
 OLIMPIA - Escultor Galmes. 64 - Tel. 5233 - Open Thurs. - Satur. - Sund.
 PATIO ANDALUZ FELIPE - Calle del Mar, - Tel. 3019
 PATIO DEL FAROLILLO - Hotel Mediterráneo - Paseo Marítimo - Tel. 6757
 SAINT - TROPEZ - 696 Calvo Sotelo (San Agustín) - Tel. 6840 - Discos
 TITOS - Plaza Comila, 8 - Terreno - Tel. 1044 - Floor show - Attractions
 TREBOL - Benito Pons, 83 - Tel. 3178 - Open Saturdays - Sundays and Thursdays
 TRIANA - Brondo, 3 (Borne) - Patio Andaluz
 TROCADERO. - Via Roma, 1 - Tel. 1131 - Floor Show - Attractions



MARGOT'S CALIPSO

THE INTIMATE NIGHT CLUB
OF PALMA

Fully air conditioned
 British management
 Orquesta «LOS AZTECAS»
 Man spricht Deutsch
 15 Apuntadores - (Borne)



DANZAS TIPICAS DE MALLORCA

Tous les Jours (exc. Dimanche)
à 19'30 et 22'30 hs.
 Every day (exc. Sunday)
at 7'30 and 10'30 p. m.
 Jeden Tag (ausser Sonntag)
um 19'30 und 22'30
 Ent.: 15 ps. Capuchinas, 49

Every night
the stars shine at

MARION et EDIE ROSE

FAICO
Gipsy dancers



MARGALUZ
Spanish Dancer

Rock & Roll with DICKIE BENNETT and PHIL PHILLIPS at the piano

MARIETTE HENNOCQ

Singer (To May 26)

THE CERNEYS

Dancers (From May 26)

2 FLOOR SHOWS: MIDNIGHT AND 1'30 A.M. - 3 BANDS

PLAZA GOMILA - TEL. 1044

Patio Andaluz FELIPE



Typische Spanische Tänze
The Typical Spanish Cabaret

CALLE DEL MAR, 9 TEL. 3019

TROCADERO

PRESENTA
SU BALLET DE ARTE ESPAÑOL
HURTADO DE CORDOBA

TRIO ELVIRA REAL Y LOS RUBY WLAAL

Todos los días baile
a las 6'30 tarde y 10'30 noche

Täglich Nachmittags und Abends Tänz

Dancing every day
from 6.30 to 9 & from 10.30 on

Floor shows
at 8.15 and at 12.15 and 1.30 a.m.

VIA ROMA, 1 TEL. 1131



Tel. 5100
Sunday aftern. at 6. p.m.
Las Dimanches à 19 h.

EL PIRATA

(HOTEL BAHIA PALACE)

DEBUT DIA 13

FRANCISCA Y TOLO — SANDOVAL
Danzas mallorquinas Ilusionismo

AMELIA DE CASTRO-SAVY and CHARLES
Artejuro español Baile acrobático

2 FLOOR SHOWS: MIDNIGHT AND 1'30 A.M.



Sea Excursions Promenades en Mer Küstenfahrten

FISHING - PECHE EN MER - FISCHEREI

Spear-fishing - Chasse sous-marine - Unterwasser-Fischerei
Pêche à la canne et au moulinet - Bottom-fishing - Grundangeln
Information: Fishing-Sport - Plaza de la Lonja, 13 - Tel. 7217

EXCURSIONES POR MAR

Bootsfahrten für Gruppen von 8 - 15 - 30 - 100 personen
Boats for groups of (bateaux pour groupes de) 8 - 15 - 30 - 100 persons
Information: Fishing-Sport - Plaza de la Lonja, 13 - Tel. 7217

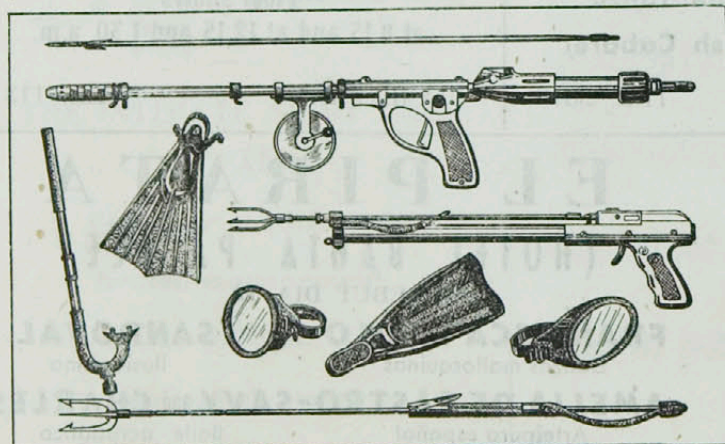
AQUALUNG-DIVING

Plongée sous marine - Tauchen mit Atemgerät
Information: Fishing Sport - Plaza de la Lonja, 13 - Tel. 7217

PALMA - PALMA NOVA by boat (en bateau)

Return - Aller et retour - Hin & zurück : Palma Nova 25 pts
Dep. Paseo Sagrera (Public steps) : 9.00 - 11.00 - 15.00
Dep. Paseo Marítimo (Hotel Alcina) : 9.15 - 11.15 - 15.15
Dep. San Agustín : 9.45 - 15.45
Dep. Palma Nova for the return (pour le retour) : 13.00 - 17.30 - 18.30
Arriv. Palma : 14.00 - 18.30 - 19.30
Information : Fishing-Sport - Plaza de la Lonja, 13 - Tel. 7217

If this guide has helped you, help us in passing it on to your friends and in recommending it wherever you go



FOR SALE or HIRE

All kinds of
Fishing Tackle
Diving Equipments

Articles of
Spear - Fishing

FISHING-SPORT

Plaza de la Lonja, 13 - Tel. 7217

DON'T LEAVE MALLORCA WITHOUT SEEING THE DANUS ART GALLERY - BUY A TYPICAL LANDSCAPE OF THE ISLAND. IT WILL BE YOUR BEST SOUVENIR - PRODUCE THIS COPY AND YOU'LL HAVE A SPECIAL DISCOUNT.

CHAMPAGNE CRUISE

Dep. Hotel Alcina Public Steps at 10 p. m. Monday - Wednesday - Friday
Music on board - Back at midnight - Price: 85 pts all included
See Fishing-Sport - Plaza de la Lonja, 13 - Tel 7217

AFTERNOON TEA CRUISE ROUND THE BAY

Dep. Paseo Sagrera Public Steps at 4'30 p. m. and Hotel Alcina at 4'45 p. m.
Every Monday - Wednesday and Friday - Back at Palma at about 7 p. m. - Price: 50 pts.
See Fishing-Sport - Plaza de la Lonja, 13 - Tel. 7217

PALMA - PALMA-NOVA and MAGALUF by boat (en bateau)

Return - Aller et retour - Hin & zurück : Palma-Nova 25 pts.
Dep. Paseo Sagrera (Public steps): 10 - 14'30
Dep. BAR ANCORA (Porto-Pi) 10'15 - 14'45
Dep. Palma-Nova: 13 - 17
See Excursions Marítimas - Paseo Sagrera (Public steps)

PALMA - MAGALUF by boat (en bateau)

Dep. Bahia Palace (Public Steps): 9'45 - 15'45 - Pesetas: 40 - Return (aller et retour) : 40 pts.
Dep. Magaluf: 12'45 - 18'30
Arrv. Palma: 14'00 - 19'30 - See Viajes Meliá

EXCURSIONS TU y YO

Dep. San Agustín (Club Cala-Nova) for Palma-Nova and Magaluf via Illetas
Dep. San Agustín 9'30 - 10 - 15'30 - Dep. Magaluf : 12'45 - 17' 5
D. p. Palma-Nova : 13 - Dep. Illetas : 13'30 - 18
Return (aller et retour) Magaluf : 35 pts. Palma-Nova : 25 pts. Illetas : 15 pts.
Information : Hotels and Tel. 6644

PLACES - DISTANCES DE PALMA - BEACHES

Palma Nova	14 kms.	Alcudia	53 kms.
Magaluf	16 »	Canyamel	62 »
Paguera	23 »	Cala Rajada	80 »
Camp de Mar	26 »	Porto Cristo	63 »
San Telmo	40 »	Cala d'Or	68 »
Calobra	70 »	Cala Santany	55 »
Cala San Vicente	56 »	Ses Salines	60 »
Formentor	70 »	El Arenal	13 »
Illetas	9 »	Santa Ponsa	20 »

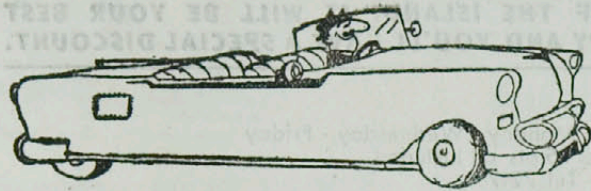
Les autocars partent de Terreno pour les plages de Palma-Nova tous les jours à 9'30 hs. et 10 hs.
Ret. 14 heures.— Places limitées — Pesetas: 35 (aller et retour)

Busses leave Terreno for the beaches of Pama-Nova every day at 9'30 a.m. and 10 a m
Return: 2 p.m.—Limited number of seats—Price: 35 Pesetas. (Return)

On every beach you can hire a cabin (generaly 10 Pts.)—a deck chair (generaly 5 Pts. for the day)
and a pedalo (25 Pts. the hour).

Sur toutes les plages en peut louer une cabine (en général 10 Pts.)—une chaise longue (en général
5 Pts. pour la journée)—et un pédalo (25. Pts. l'heure).

Tratar sus negocios sin publicidad,
es lo mismo que guñiar el ojo a una bella muchacha en la oscuridad



Excursions

Ces excursions sont organisées par les AGENCES DE VOYAGE. Les cars prennent les voyageurs tous les matins à leurs hôtels et les reconduisent tous les soirs. Billets dans toutes les agences de voyage et chez les concierges des hôtels.

VALLDEMOSA - visite de l'ancienne abbaye des pères Chartreux et présentation de danses majorquines - MIRAMAR: visite de SON MARROIG - PUERTO SOLLER (déjeuner) - SOLLER - jardins de RAXA et d'ALFABIA — Tous les jours sauf le Dimanche pour ce qui est de l'excursion. MANACOR et PUERTO CRISTO (déjeuner) - Visite des grottes de DRACH et de HAMS
Tous les jours sauf le Samedi

FORMENTOR et PUERTO POLLENSA (déjeuner) - Mardi et Vendredi: danses majorquines - Dimanche: visite des grottes de CAMPANET - Tous les Mardis - Jeudis - Vendredis et Dimanches Grottes d'ARTA et de DRACH avec déjeuner à Puerto Cristo ou Cañamel
Tous les Lundis - Jeudis et Vendredis

LLUCH: visite du musée du monastère - LA CALOBRA (déjeuner) et le TORRENT DE PAREYS
Tous les Mardis - Jeudis et Samedis

Visite de la ville à pieds, le matin - l'après midi: visite des environs de Palma en autobus BELLVER - GROTTES DE GENOVA etc. — Tous les Mardis et Samedis

CANYAMEL (déjeuner) et visite des GROTTES D'ARTA - Tous les Samedis

CAMP DE MAR (plage) - Tous les Samedis, départ au début de l'après-midi

ALGAIDA: visite du monastère — Tous les Samedis, départ au début de l'après-midi.

Chemist open all night - Pharmacie de nuit

May 19 - May 25

ROSSELLO - Plaza Cort, 8 - Tel. 2735

May 26 - May 31

NADAL - » » 2 - Tel. 2636



SELF DRIVE CARS

LOCATION SANS CHAUFFEUR

AUTOVERMIETUNG SELBSTFAHRER

SEAT - BISCUTER

RENAULT 4 CV. - FORD SUPER

Vasco de Gama, 7 Tel. 6398

Casas en BARCELONA y MADRID

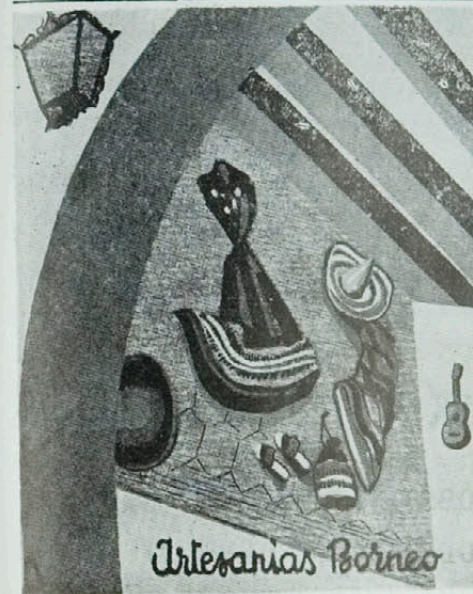
PHILIPS FOR MUSIC

DISQUES - RECORDS - SCHALLPLATTEN
IN OUR SHOWROOM YOU WILL FIND ALL THE LATEST FLAMENCOS

Casa José Bruades

PLAZA ROSARIO 1

Near the Post Office



Conquistador, 36

PALMA DE MALLORCA

LA EXPEDITIVA

B. MIRALLES



WE FORWARD YOUR LUGGAGE
WE SEND YOUR GIFTS

Calle de la Soledad, 29 - Tel. 1426

La Industrial

JUGUETES - JOUETS - TOYS
PECHE SOUS-MARINE
UNDER WATER FISHING





A Gourmet's Paradise
on an Enchanted Island...

English spoken

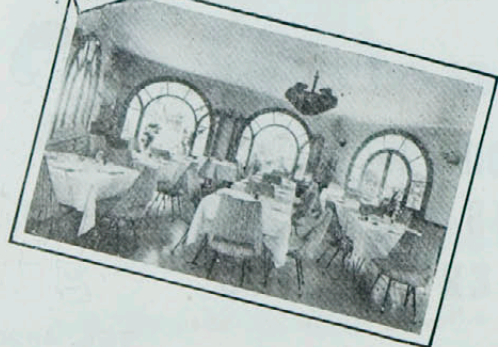
Calvo Sotelo, 304 - El Terreno

Tel. 7332



ASK FOR OUR SPECIALITIES

- LOBSTER COCKTAIL
- LOBSTER CANTABRICO
- LOBSTER MALLORQUINA
- LOBSTER COSTA BRAVA
- LOBSTER CARDINAL
- GAMBAS CURRY
- SHELL FISH CANTABRICO
- SMOKED SALMON
- CHICKEN CURRY
- CHICKEN KIEV
- REAL BOUILLABAISSE
- PAELLA VALENCIANA



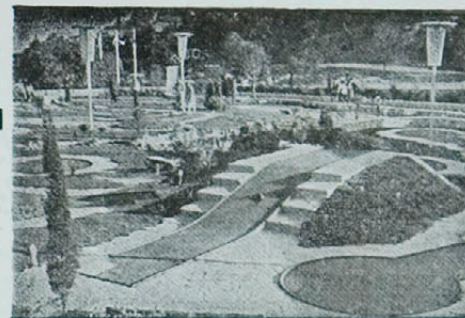
GOLF MINIATURE

A 10 minutes du centre de Palma
Dans un décor féérique un parcours exceptionnel

Kommen sie ! Sie werden sich gut unterhalten
Zeigen sie wie sie geschickt sind

It's only 10 minutes from the center of Palma
The spot is lovely and the game is thrilling

Le Parcours: Pesetas. 15 The Game



BAR - TEA ROOM - DANCING
ARRET AUTOBUS (BUS STOP) GOLF CALAMAYOR



Su mayor acierto
es la adquisición
de una cocina a
Gas Firpe
LA COCINA QUE ELLA MISMA
SE FABRICA EL GAS

YOUR TROUBLES HAVE COME TO AN END!

with a FIRPE gas cooker
that makes its own gas

Ask for a test without any engagement
Besten Erfolg sichert die Anschaffung einer
GAS FIRPE KÜCHE

Die Küche die selbst ihr Gas herstellt
Vorführung ohne jegliche Verpflichtung

Calle Blanquerna, 25

Tel. 4649

JUSTE CE QUE VOUS CHERCHEZ...
saladiers en bois d'olivier
coffrets à bijoux en marquetterie de Grenade
mouchoirs peints par Dali

JUST WHAT YOU ARE LOOKING FOR...
olive wood bowls
little jewel cases from Grenada
lovely hankies painted by Dali

J. CAP.

Paseo Generalísimo, 41

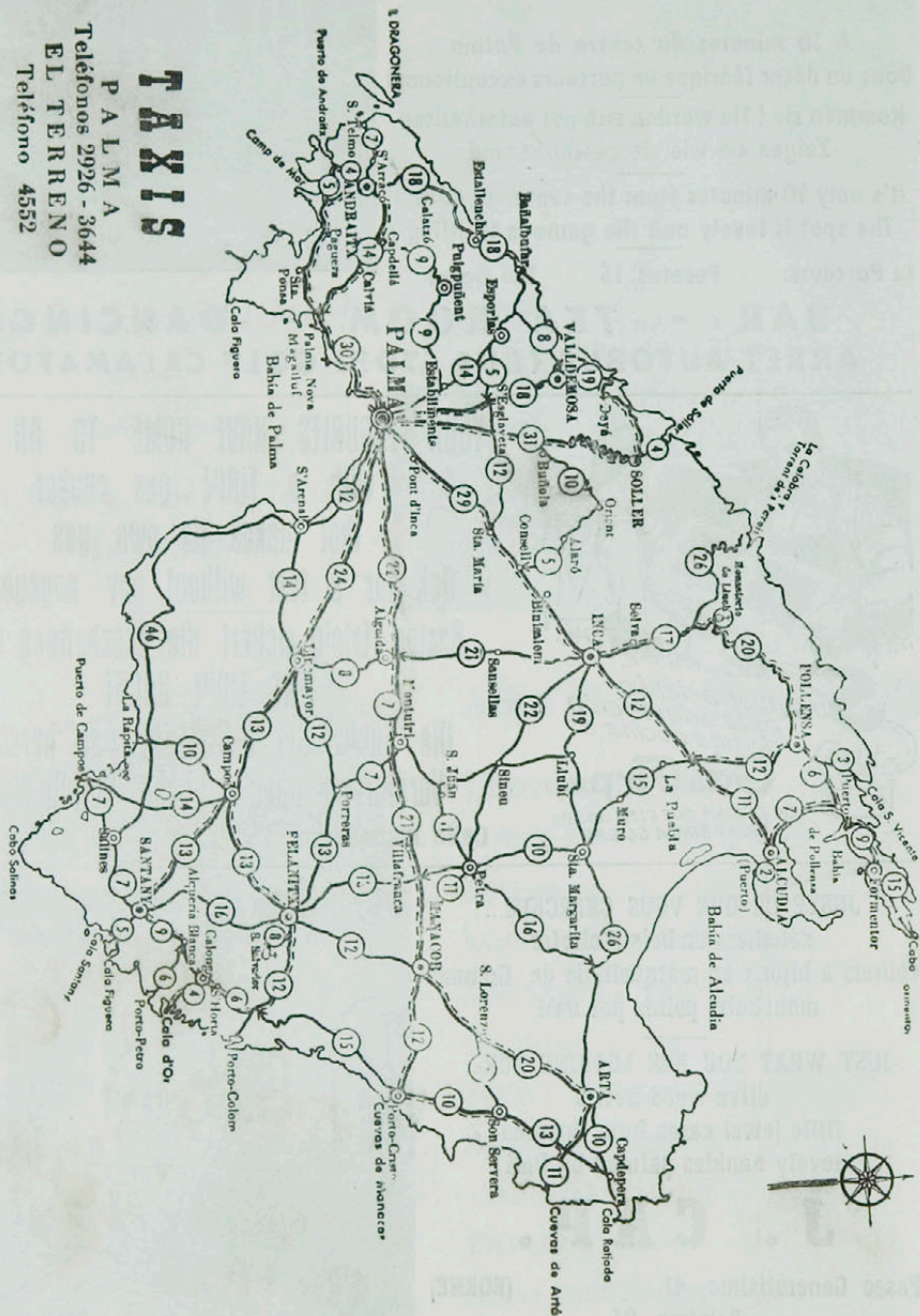
Pelaires, 26

(BORNE)



DE LA GUIA GRAFICA COSTA

TAXIS
PALMA
Teléfonos 2926 - 3644
EL TERRENO
Teléfono 4552

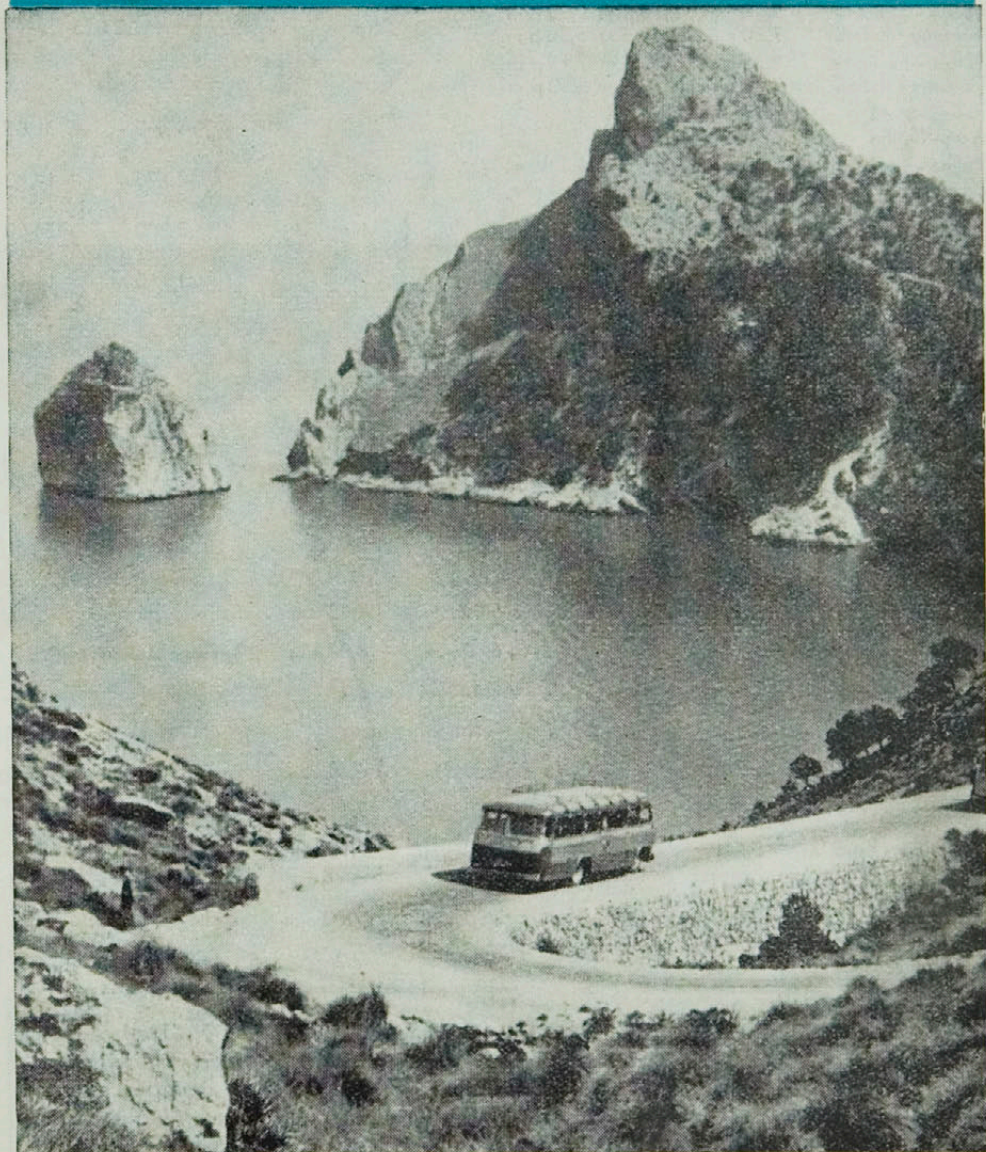


MAP ATLANTIC 442-1110 25 PALMA



MAJORCA

GENERAL INFORMATION





GENERAL INFORMATION

Railway Time-Table

	PRICE	
	1st Class	2nd Class
Palma - Santañy	9,20 a.m. 2,30 p.m. 7,20 p.m.	
Santañy - Palma	7,30 a.m. 12,45 p.m. 5,30 p.m.	23,15
Palma - Felanitx	9,25 a.m. 2,15 p.m. 7,15 p.m.	
Felanitx - Palma	7,30 a.m. 12,30 p.m. 5,30 p.m.	21,70
Palma - Artá	8,00 a.m. 2,25 p.m.	
Artá - Palma	6,35 a.m. 4,00 p.m.	50,00 36,05
Palma - La Puebla	8,40 a.m. 2,45 p.m. 6,30 p.m.	
La Puebla - Palma	7,00 a.m. 12,10 p.m. 5,33 p.m.	25,05 17,40
Palma - Sóller	8,00 a.m. 1,00 p.m. 4,00 p.m. 8,00 p.m.	Return
Sóller - Palma	6,45 a.m. 9,40 a.m. 2,15 p.m. 6,00 p.m.	
Palma - Inca	8,00 a.m. 8,40 a.m. 12,30 p.m. 2,25 p.m. 2,45 p.m. 6,30 p.m.	
Inca - Palma	6,15 a.m. 7,55 a.m. 8,41 a.m. 1,04 p.m. 2,30 p.m. 6,38 p.m.	15,50 11,10
Palma - Manacor	8,00 a.m. 2,25 p.m. 7,20 p.m.	
Manacor - Palma	7,30 a.m. 5,12 p.m.	33,75 23,85

Bus Lines

	DEPARTURE	RETURN	LEAVING
Palma - Paguera - Camo de Mar - Andraitx	9,00 a.m.	7,30 a.m.	Vía Roma, 7
	3,00 p.m.	5,30 p.m.	
Palma - Valldemosa - Deyá	2,30 p.m.	8,00 a.m.	Calle 31 de Diciembre
	9,00 a.m.		
	3,00 p.m.	7,00 p.m.	
Palma - Puerto de Pollense	5,00 p.m.	7,45 a.m.	Railway Station
Palma - Puerto de Alcudia	6,00 p.m.	8,00 a.m.	Railway Station
Palma - El Arenal	Frequent services		Avda. Alejandro Rosselló
Palma - Ca'n Pastilla	Frequent services		Avda. Alejandro Rosselló
Palma - Calonge	2,30 p.m.	6,40 a.m.	Avda. Alejandro Rosselló
Palma - Artá - Cala Ratjada	5,00 p.m.	7,15 a.m.	Railway Station
Palma - Esporlas	12,30 p.m.	7,15 a.m.	Calle 31 de Diciembre
Manacor - Porto Cristo	10,30 a.m.	3,30 p.m.	Railway Station
Palma - Bañs d'Ifar - Estallenchs	2,30 p.m.	7,00 p.m.	Calle 31 de Diciembre

The Society Fomento de Turismo de Mallorca, in issuing this Information Bulletin, would like to wish all visitors to the golden Isle a very happy visit and hope that their stay may always remain most pleasant memory.



GENERAL INFORMATION FOR TOURISTS AND THOSE WHO INTEND TO TAKE UP THEIR RESIDENCE IN SPAIN

Passports and Visas

Travellers must be provided with passport stamped with visa by the Spanish Consul nearest to their place of residence. The visa is valid for 90 days, allows 3 exits and entries during the period and may be renewed for a further 3 months. North American citizens do not require a visa to enter Spain.

Foreign Currencies

Each traveller may enter Spain with pesetas up to a value of 10 000 ptas. and in addition may bring in unlimited foreign currency. He may leave with not more than 2 000 ptas. plus what remains of the foreign currency imported.

All banks, Travel Agencies and Luxury and 1st class Hotels in Spain are authorised to change money. According to the most recent information, the approximate rates of exchange are as follows:

100 French francs	10'00 ptas.	100 Portugese escudos	146,08 ptas.
£ 1 sterling	117,60 »	1 Swedish crown	8,11 »
1 American dollar	42,00 »	1 Danish crown	6,08 »
100 Italian liras	6,75 »	1 German mark (note)	10,00 »
100 Swiss francs	970,31 »	1 Mexican peso	3,34 »
100 Belgian francs	84,00 »	100 Brazilian cruzeiros	46,00 »
100 Dutch florins	1.105,26 »	1 Norwegian crown	5,88 »

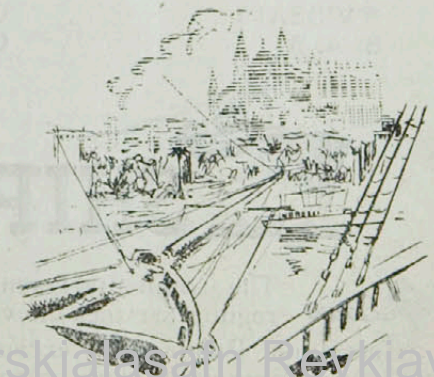
Customs Regulations

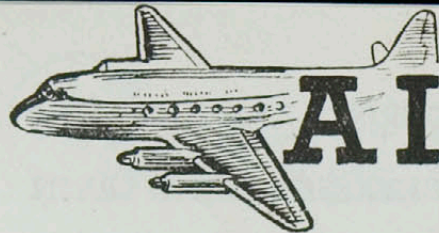
The customs regulations are approximately the same as those which obtain in other countries, permitting entry into Spain of everything for traveller's personal use: also camera, typewriter and a reasonable quantity of cigarettes, etc. Manufactured goods up to a value of 25.000 pts. may be taken out of the country.

Automobiles

The following requirements are necessary in order to bring a car into Spain: International Driving License, "Carnet de Pasaje en Aduana"; 60 pesetas Customs Duty. Cars may be temporarily imported with the tank full of petrol or other fuel. The sale of petrol, at 7,00 ptas per litre, is unrestricted in Spain.

The driving international permission is required to rent a car without driver and to rent motorcycles



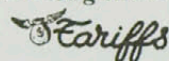


AIRLINES



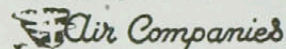
All the most important Airlines of the world have services with stopping places at Madrid and Barcelona, enabling one to reach Palma (Majorca) by the "Iberia" and "Aviaco" national airline companies which have services between Palma and the following cities: Madrid (daily), Barcelona (several every day) Valencia (daily), Mahón (weekly). The Spanish Co. "Aviaco" and the French Co. "Air Algérie" have a weekly service Marseilles - Palma - Algiers. B. E. A. have frequent direct flights from London to Palma and from Manchester to Palma; "Air France" have a direct service from Paris to Palma; "Sabena" and "K. L. M." have direct services from Amsterdam - Brussels to Palma; "Swissair" have a direct flight Geneva to Palma.

During the summer season those services are improved with additional ones.



Prices for the Air		Palma - Amsterdam	230 d. fl.
Services are as follows:		Palma - Brussels	2.685 fr. b.
Palma - Madrid	750 pts.	Palma - Paris	20.900 fr. fr.
Palma - Barcelona	280 »	Palma - London	£ 25 Sh. 8
Palma - Valencia	375 »	Palma - Marseilles	7.450 fr. fr.
Palma - Mahón	205 »	Palma - Algiers	6.950 fr. fr.
Palma - Zaragoza	675 »	Palma - Geneve	222 fr. s.
Palma - Bilbao	1.055 »	Palma - Manchester	£ 28 Sh. 6

Transport from the Company's Office to the Airport: 10 pesetas.



Addresses in Palma.

AIR ALGERIE :	Conquistador, 12	Tel. 7781
AIR FRANCE :	Plaza Sta. Catalina Thomás, 35	Tel. 2594
ALITALIA :	General Goded, 32	Tel. 5356
AVIACO :	Conquistador, 12	Tel. 7105
B. E. A. :	Vía Jaime III, 4	Tel. 5339
IBERIA :	Avda. Conde Sallent, 12	Tel. 5200
K. L. M. :	Pelaires, 107 - 109	Tel. 6969
SABENA :	Conquistador, 12 (temporary)	Tel. 3002
SWISSAIR :	Conquistador	Tel. 3937
S. A. S. :	Generalísimo Franco, 68	Tel. 3592



SHIPPING LINES



The Compañía Trasméditerránea (Spanish) has the following regular services between Majorca and the mainland:

Barcelona - Palma: daily except Sunday, at 10 p.m.
Palma - Barcelona: daily except Sunday, at 10 p.m.

Valencia - Palma: Tuesdays, at 9 p.m., stopping at Ibiza.
Friday, at 8 p.m., direct.
Palma - Valencia: Mondays, at 12 p.m. stopping at Ibiza.
Thursday, at 7 p.m., direct.
Alicante - Palma: Saturday, at 9 p.m. stopping at Ibiza.
Palma - Alicante: Friday, at 12 a.m. stopping at Ibiza.
Palma - Mahón: Tuesdays, at 9 p.m., direct.
Mahón - Palma: Wednesday, at 9 p.m. direct.

During the summer season those services are improved with additional ones.



The following rates are in force, and are the same for the crossings Barcelona - Palma; Valencia - Palma and Alicante - Palma and vice-versé.

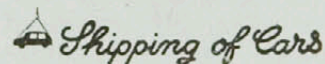
Of the boats CIUDAD DE BARCELONA or CIUDAD DE BURGOS:

1st class berth	393'00 ptas	Class Tourist-popa (B)	
1st class seat	333'00 »	berth (2 persons cabine)	202'00 ptas.
Class Tourist-proa (A)		berth (4 persons cabine)	167'00 »
berth (2 persons cabine)	272'50 »	Seat	137'00 »
berth (4 persons cabine)	239'50 »	On the deck	101'00 »
Of others boats:		2nd class	209'50 ptas.
1st class	335'00 ptas.	3rd class	126'00 »

For the crossings from Palma-Ibiza, Palma-Mahon, Palma-Ciudadela or vice-versé the prices are as follows:

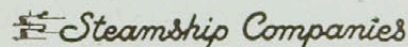
PALMA - IBIZA		PALMA - MAHON AND PALMA - CIUDADELA	
1st class	238'00 ptas.	1st class	263'00 ptas.
2nd class	127'50 »	2nd class	154'50 ptas.
3rd class	86'00 »	3rd class (Mahón)	111'00 ptas.
On the deck	71'00 »	3rd class (Ciudadela).	91'00 ptas.

There are also luxury cabins at higher prices. Starting in Summer, The French Company "Navigation Mixte" has a weekly sea service Marseilles - Palma - Algiers. The Zim Israel Navigation Company has a service every 20 days between Palma and New York.



From Barcelona, Valencia or Alicante to Palma:


1.000 kgs.: 741.65 pts. 1.500 kgs.: 888,80 pts. 2.000 kgs.: 1.138,70 pts.
Transport of motor-bicycles is from 160 ptas.



Compañía Trasméditerránea :	Vía Layetana, 21. Barcelona.
» » :	Muelle, Palma de Mallorca.
» » :	Esplanada de España, 3. Alicante.
» » :	Colón, 80, Valencia.
Cie. Navigation Mixte :	1, La Cannebière. Marseille.
» » » :	Agence Schembri, Avda. Antonio Maura. Palma.
» » » :	11, Boulevard de la République. Alger.
» » » :	1, Rue Scribe, Paris.
Zim Israel Navigation Company :	39, Paseo Generalísimo. Palma.
» » » :	5, Vía Layetana. Barcelona.
» » » :	5, Avenue de l'Opera, Paris.



During summer it is advisable to book sea or air passages as fast in advance as possible.



MAJORCA

General Information

The Island of Majorca is situated in the Mediterranean and is the largest of the Balearics, a Spanish territory. It covers an area of 3.640 Square Kilometres and has a population of 350 000. Agriculture is an important industry. Deserving of special mention are the veritable forests of almond trees, in bloom during January and February, and the characteristic olive trees. There are important factories producing shoes, wines, spirits, furniture, artificial pearls, textiles, wrought iron, raffia, ornamental glass, embroidery, etc.

In the year 123 B. C. the Romans conquered Majorca, uniting it with the other islands of the Archipelago to form a Roman province. In the 5th century the island was invaded by the Vandals and in the 6th century it became part of the Byzantine Empire. In the 8th century it fell into the hands of the Arabs, suffering a series of vicissitudes until its conquest in 1229 by James I. who united it under the crown of Aragón. On the death of this King, it was made an independent State, but was again incorporated into the Kingdom of Aragón by Peter IV, in the 14th century. Still later it became part of the Spanish Monarchy, upon the marriage of Ferdinand II of Aragón and Isabella of Castille, who were the founders of national unity in Spain. The incomparable beauties of the whole island have made it known through out the world as the Island of Light, the golden Isle, the Tranquil Isle and the Pearl of the Mediterranean.

Apart from its beauty, its attractive beaches, its mountains, its unspoilt folklore, the hospitality of its people, and its splendidly organised Tourist services, Majorca boasts, yet another advantage, namely its climate, which never drops to freezing point in winter and never reaches (33 c. in summer, the average temperature being in the region of 17 c.)

Throughout the island there is a network of roads and railways, giving access to its most secluded and beautiful corners.

Beaches

The chief Majorcan beaches, all of which are of fine sand, bordered by pine trees and with good means of approach, are given below.

Beaches	Distance from Palma	Beaches	Distance from Palma
Palma Nova	14 kms.	Alcudia	54 kms.
Santa Ponsa	20 »	Canyamel	62 »
Paguera	23 »	Cala Ratjada	80 »
Camp de Mar	25 »	Porto Cristo	63 »
San Telmo	37 »	Cala D'Or	78 »
Calobra	80 »	Cala Santany	55 »
Cala San Vicente	56 »	Ses Salines	60 »
Formentor	70 »	El Arenal	»

Mountain Villages

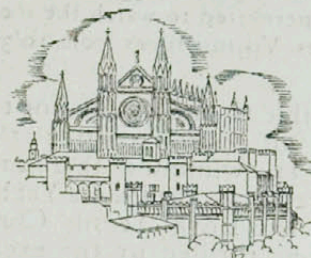
Monasterio de Lluch (480 m.)
 Monasterio de Randa (550 m.)
 Monasterio de San Salvador (500 m.)
 Valldemosa (440 m.)

All these places offer accommodation.

Principal Mountains

Puig Mayor	1.445 metros	Puig Tomir	1.100 metros
Puig de Massanella	1.340 »	L'Ofre	1.080 »
Teix	1.125 »	Galatzó	1.025 »

All these are found in the mountain range which extends across the North of the Island.



PALMA

The capital of Majorca, and of the Balearic group, is the city of Palma, situated on the bay of the same name, and numbering some 150.000 inhabitants.

Monuments

Below are given the city's principal Buildings and Museums:

The Cathedral, in Gothic Style, begun in 1230.

The Lonja, (Exchange) in Gothic Style, 15th century.

Almudaina Palace, ancient residence of the Moorish Kings, rebuilt in the 12th century and 16th century.

Arab Baths, the only trace of Moorish architecture.

Bellver Castle, 14th century, overlooking the town and bay.

Consulado de Mar, 17th century, containing the Maritime Museum.

Caves of Génova: (Génova village). Open all day.

There are also many interesting religious buildings (the churches of Sta. Eulalia, San Miguel, San Nicolàs and Santa Cruz) and palaces built in the 16th century, 17th century and 18th century, in which the beautiful courtyards of (Morell, Oleo, Oleza, Palmer, Verí, Vivot, etc.) are deserving of mention.

Episcopal Museum: Archeology, Jewels, Ceramics, Paintings, Sculpture.

Open from 10 a.m. at 13 p.m. and from 4 p.m. at 6 p.m. Entrance: 3 pesetas.

Provincial Museum: of Fine Arts, (Lonja) Paintings.

Open from 10 a.m. - 12 p.m. and 3 p.m. - 5 p.m. Entrance: 1 peseta.

Maritime Museum: (Consulado del Mar), Collection of Model ships, Weapons, Navigation Charts, etc.

Open from 9 a.m. - 1 p.m. and 4 p.m. - 7 p.m. Entrance: 2'50 pesetas.

Cathedral Treasures: Vestments and religious ornaments.

Open from 10,30 a.m. - 12,30 p.m. and 4,15 p.m. 7 p.m. Entrance: 5 pesetas.

Municipal Museum: (Bellver Castle) Archeology. Open from 10 a.m. - 2p.m. and 4 p.m. till sunset.

Entrance: Week-days 5 ptas. Sundays and holidays 2 ptas.

Bullfighting Art Museum: Hotel Mediterráneo ground floor. Paseo Marítimo.

Casa Cirera Museum: Plaza de la Almoyna. Collection of majorcan model ships, paintings and Admiral Nelson's souvenirs.

Open from 10 a.m. - 13 p.m. and from 4 p.m. - 7 p.m. Entrance: 5 pesetas.

Casa Típica Mulet: (Génova village) Ceramics, majorcan national costumes, and local hand work. Open all day. Entrance: 4 pesetas.

Sociedad Arqueológica Luliana: (Almudaina, 8) Archeology. Open from 11 a.m. - 1 p.m. and 5 p.m. - 8 p.m. Entrance: 1 peseta.

Guasp Printing Press: (Calle Morey), Engravings and ancient printing presses. Open from 10 a.m. - 1 p.m. and 4 p.m. - 6 p.m. Entrance: 3 pesetas.

Bullfight Museum: Capuchinas, 19 (Casa Oliver). Open from 10 a.m. - 1 p.m. and 5 p.m. - 8 p.m. Entrance: 5 pesetas.

Mansión del Arte: (Calle Apuntadores, 45). Modern and classical paintings. Open from 9 a.m. - 1,30 p.m. and 3,30 p.m. - 7 p.m. Entrance: 4 pesetas.

Gordiola's Furnaces: Old majorcan glassfactory from the 17 century invites you to visit his medixval installations, where you will be permitted to watch the men work the glass before the fauces of irradiate furnaces. Visiting times from 10'30 to 14'30 on workingdays. Entrance free.

Sports and Pastimes

In Palma it is possible to indulge in, or to watch, practically all sports, particularly water sports, such as swimming (there are various swimming pools), underwater fishing and regattas, the Palma Yacht Club being perhaps the best appointed in Spain. The Royal Tennis Club has several regulation Courts. Every day one may be thrilled by the exciting pelota matches at the Fronton. There are some very fine sport centres in Palma; ice, a football field, horse and dog racing tracks, (Velódromo), bull ring etc. There is also good arena for cock-fighting. And a Miniature-Golf in Calamayor's beach. Camping can be practiced in Cala Mezquida (Capdepera).

Places of entertainment

The principal ones are:

		Telephone:
Theatres:	Balear	Zanoguera 1255
	Lirico	Plaza Libertad 2749
	Principal	Plaza Weyler 3346
Cinemas:	Astoria	Navarra, 13 4163
	Augusta	Conde Sallent, 2 1888
	Avenida	Avda. Alejandro Rosselló 3142
	Born	Paseo Generalísimo, 31 1370
	Rialto	San Felio, 9 1245
	Night Clubs and Dance Halls:	Aquarium (H. V.) Paseo Marítimo (de 19 a 23 h.) 6200
	Casablanca Plaza Lonja, 9 2971	
	El Molino El Jonquet (open in summer)	
	El Pirata Paseo Marítimo (Bahía Palace)	5100
	Ibiza Dameto	6903
	Jack el Negro El Jonquet (open in summer)	4310
	Olimpia Escultor Galmés, 64	5233
	Patio del Farolillo Paseo Marítimo	6757
	Rosales Héroes de Manacor (open in summer)	7055
	Tito's Plaza Gomila, 6	1044
	Trébol Benito Pons	3178
	Triana Yeseros	
	Trocadero Vía Roma, 1	1133

Palma possesses an excellent Symphony Orchestra which gives frequent concerts. There are exhibitions of Majorcan folk-dancing, in Casa Oliver (19 Capuchinas).

Ancient Records and Libraries

Public Provincial Library	C/. Lulio	Open from 10 a.m. - 1 p.m.
Biblioteca Cultura Artesana	Diputación	Open from 9,30 a.m. - 1,30 p.m. and 5 p.m. - 8 p.m.
Municipal Library	Ayuntamiento	Open from 10 a.m. - 1 p.m. and 6 p.m. - 9 p.m.
Biblioteca Caja de Pensiones	Previsión, 1	Open from 11 a.m. - 1 p.m. and 4,30 p.m. - 8 p.m.

Other Libraries which may be utilised by previously obtaining permission, are those of the Circulo Mallorquín, the Luliana Archeological Society, the Library of Count Peralada (Palacio Vivot) and that of the Bishops's Palace.

Travel Agencies

	Sucursals:	Telephone:
Aeromar Expreso	Plaza Weyler	4454 4455
Baixas	Soledad, 16	3784 6254
Cafranga	José Tous Ferrer, 5	4345
Cia. Hispanoamericana de Turismo	Paseo del Generalísimo	7460-7078
Viajes Conde	Calle San Miguel, 140	6491-6421
Cosmos	Avda. A. Rosselló, 48	4345
C. Y. R. A. S. A.	General Goded, 27	3547-7536-6383
España Mundial	José Tous Ferrer, 60	4574
FRAM	Arabi	2746
Galicia	Plaza Gomila	3361
Iberia	Paseo del Generalísimo, 48	2222-3790-3963
Internacional Expreso	General Goded, 37	7346-3030
I. C. A. B.	Pelaires, 103	4960
López de Haro	Avda. Antonio Maura, 64	5305
Mallorca	Avda. Antonio Maura, 26	3512
Marsans	Paseo del Generalísimo, 26	1633-6353
Meliá	Paseo del Generalísimo, 74	4006-5311
Pier Busseti	Victoria, 22	2276
Rumbo	Plaza de Cort	4261
Taber	Paseo de Sagrera	4008-7058
Ultramar Express	Enrique Alzamora, 3	3682
Wagons Lits/Cook	Paseo del Generalísimo, 5	4614-2129
Delegations: Viajes B.A. K.U. MAR	Avda. Antonio Maura, 78	3935
Vincit	San Cayetano, 3	2879
Viajes Aerotour (B)	Avda. Jaime III, 8-10	7111
Viajes Macuvi	Olmos, 41 - bajo	
Viajes Vitusa	Brossa, 21 - entlo.	

Consulates

	Telephone:
Argentine	Avda. Alejandro Rosselló, 40 2160
Belgium	Santo Domingo, 22 2221
Brazil	Balmes, 57 5531
Colombia	La Bonanova 7152
Costa Rica	Miramar, 26 2139
Chil	Vía Roma, 57 2279
Denmark	Avda. Antonio Maura, 9 3741
El Salvador	Estanco, 3 3505

The Low Countries

Finland	Avda. Antonio Maura, 64	5303
France	Avda. Antonio Maura, 19	1417
Greece	General Mola, 43	4100
England	Marqués de la Cenia, 59	3992
Italy	José Tous Ferrer, 28	2445
Mónaco	Vía Roma, 86	1116
Nicaragua	Olmos, 168	1390
Norway	San Nicolás, 25	3122
Perú	Avda. Antonio Maura, 19	1417
Portugal	Estanco, 3	5313
Swede	Salud, 9	2099
Uruguay	Arquitecto Reynés, 1	7760
	Sindicato, 213	2751

Banks

Banco de Bilbao	Plaza Virgen de la Salud	5400
"	Paseo del Generalísimo, 35	5647
Banco Central	Colón, 23	7778
Crédito Balear	General Goded, 67	7300
Banco de España	San Bartolomé, 40	2021
Banco Español de Crédito	Jaime II, 51	7203
"	Sindicato, 184	7400
Banco Hipotecario de España	Plaza Cort, 26	1241
Banco Hispano Americano	Sindicato, 10	4603
"	Plaza España, 40	5737
Banca March	San Miguel, 17	4805
Banco de Santander	Sindicato, 211	7509
"	Jaime II, 38-40	3625
Banco Vitalicio de España	Conquistador, 42	2215

Art Exhibition

Círculo de Bellas Artes	Conquistador, 37	5739
Galerías Costa	Conquistador, 32	1839
Galerías Danús	Danús, 3	3780
Galerías Quint	Imprenta, 2	3112

Photography

Casa Planas	Avd. Antonio Maura, 36 y Colón, 17	3888-6665
Casa Vila	Plaza Santa Eulalia, 2	2461
Foto Balear	Avda. José Antonio, 9	1566
Foto Castell	Plaza Santa Catalina Thomás, 27	1675
Foto Rul-lán	General Goded, 10	4235
Foto Truyol	Avda. Antonio Maura	6204
Icaria-Photo Service	Avda. Conde Sallent 31	3687

Restaurants

Bellver	Plaza Gomila	1094
Cantábrico	Calvo Sotelo, 304	7332
Club Náutico	Puerto	4404
El Patio	Calle Gomila, 5	7609
La Lareira	Calle Verja, 4	6259

Telephone:

Latx
Lisboa
Llabrés
Lonja del Pescado
Matias
Nebraska
Oriente
Del Puerto
Teluán
Tritón
Yate Ritz

Calle de Pelaires	7130
Plaza Olivar, 3 - 4	3951
Calvo Sotelo, 144	1556
Muelle de San Pedro	3209
Calvo Sotelo	
Calle Gomila	4754
Paseo del Generalísimo, 160	1416
Paseo Sagrera, 11	3537
Pelaires, 105	4587
Estanco, 5	7784
Paseo del Generalísimo, 16	2137

Tea Rooms and Bars

Bar Cactus	Calvo Sotelo, 300	Telephone:
Bar Larry's	Calvo Sotelo	4589
Bar Mam's	Calvo Sotelo, 179	
Bar Riskal	Plaza Libertad	1004
Bar Simbad	Avda. Antonio Maura	4506
Café Formentor	Avda. José Antonio, 3	5416
Cafetería Miami	Paseo del Generalísimo, 29	4918
Calipso	Calle Estanco	
Celler Catalán	General Mola	4507
Degustaciones Castillo	Bellver	1028
El Tirol	Apuntadores	5359
Salón de Té Mónaco	Plaza Gomila, 5	1036
Salón de Té Oasis	Plaza Gomila	1045
Granja Reus	General Mola, 7	1029

Vehicles for hire

A. J. E. S. A.	General Goded, 41 - 1.º	5091
Rocas	Vasco de Gama, 7	6396
Garage Vidal	Avda. Alejandro Rosselló	1641
Garage Vulcano	Miguel Marqués, 5	4157
Moto Sport	Héroes de Manacor, 76 y 78	5321 - 2186
Moto Bahía	Paseo Marítimo, 20 y 21	5321

Hire of motorcycles: *Vespa*: Alquiler «Frey». Blanquerna, 70. C. Puig. Aragón, 58
Casa Juliá: Arturo Rizzi, 14 y Calvo Sotelo, 338. Comercial Auto-moto: P. Mayor, 27
Casa Mascaró: Joaquín M.ª Bover, 63 - Tels. 7031-5668.

Hire of bicycles: Terrasa: Vía Roma, 25

Villas and Cottages to let or for sale

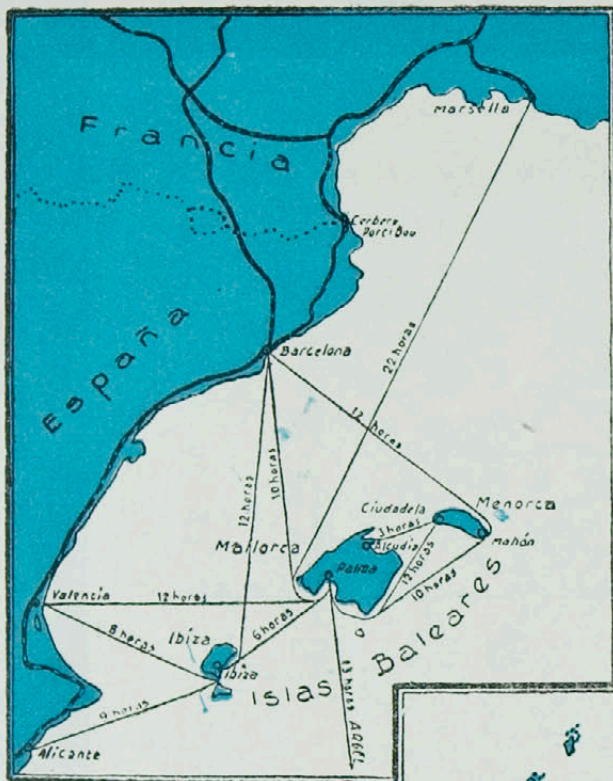
Agencia Alzina	Jaime II, 32	4147
Agencia Díaz	San Miguel, 124	1326
Agencia Kirchofer	San Miguel 9	6439
Agencia Mascaró	San Miguel, 141	3730
Agencia Rullán	Olmos, 120	1637
Agencia Vich	Calvo Sotelo, 122	6049
Bolsa de la Vivienda	Monjas, 2	
Finca Mayor	Real, 15	
Lucas Cladera	Avda. A. Rosselló, 86	1870



M
A
P
O
F
P
A
L
M
A

T
U
R
I
S
M
O





Direct communications with Palma de Mallorca

BY SEA



BY AIR



Official Organisations

We give here those of greatest interest to the tourist:

	Telephone:
Customs	Verí, 12 1167
Town Hall	Plaza de Cort 1900
Chamber of Commerce	Estudio General, 7 1139
C. A. M. P. S. A.	Capuchinas, 13 2315
Post Office and Telegraph Office	Gran Vía José Antonio, 6 1867
Branch	Calvo Sotelo (Terreno)
Branch	Avda. Alejandro Rosselló
Delegación Información y Turismo	Paseo Sagrera, 9 2022
Civil Government	Gran Vía José Antonio, 4 4363
Spanisch Tourist Office	Paseo Generalísimo, 38 - 40 2216
Law Courts	San Miguel, 186 2824
Police Station	Gran Vía José Antonio, 4 1221
Telephones	Gran Vía José Antonio, 2 02-03-04-09

Culture Centers

	Telephone:
Alliance Française	San Felio, 11-bis. 4101
Círculo de Bellas Artes	Conquistador, 37 3112
Estudio General Luliano	San Roque 1988
Schola Lulistica	Blanquerna, 47 5991
Sociedad Arqueológica Luliana	Almudaina, 8
Sociedad Fomento del Turismo	Paseo Generalísimo, 34 - 36 5310
Sociedad Protectora de Animales y Plantas	Sindicato
Instituto Oceanográfico	Paseo Marítimo
Casa de la Cultura	Raimundo Lulio

Taxis and automobiles for hire

There is a flourishing service of taxis and cars equipped with taximeter, starting at a minimum rate of 3'50 ptas. and charging 0'30 ptas. for every 150 metres. There are slight additional charges for luggage, services to the port, and for certain special events. Hired cars without taximeter charge at the rate of 4 - 5 ptas. per kilometre.

Buses and Tramways




The routes are given below:

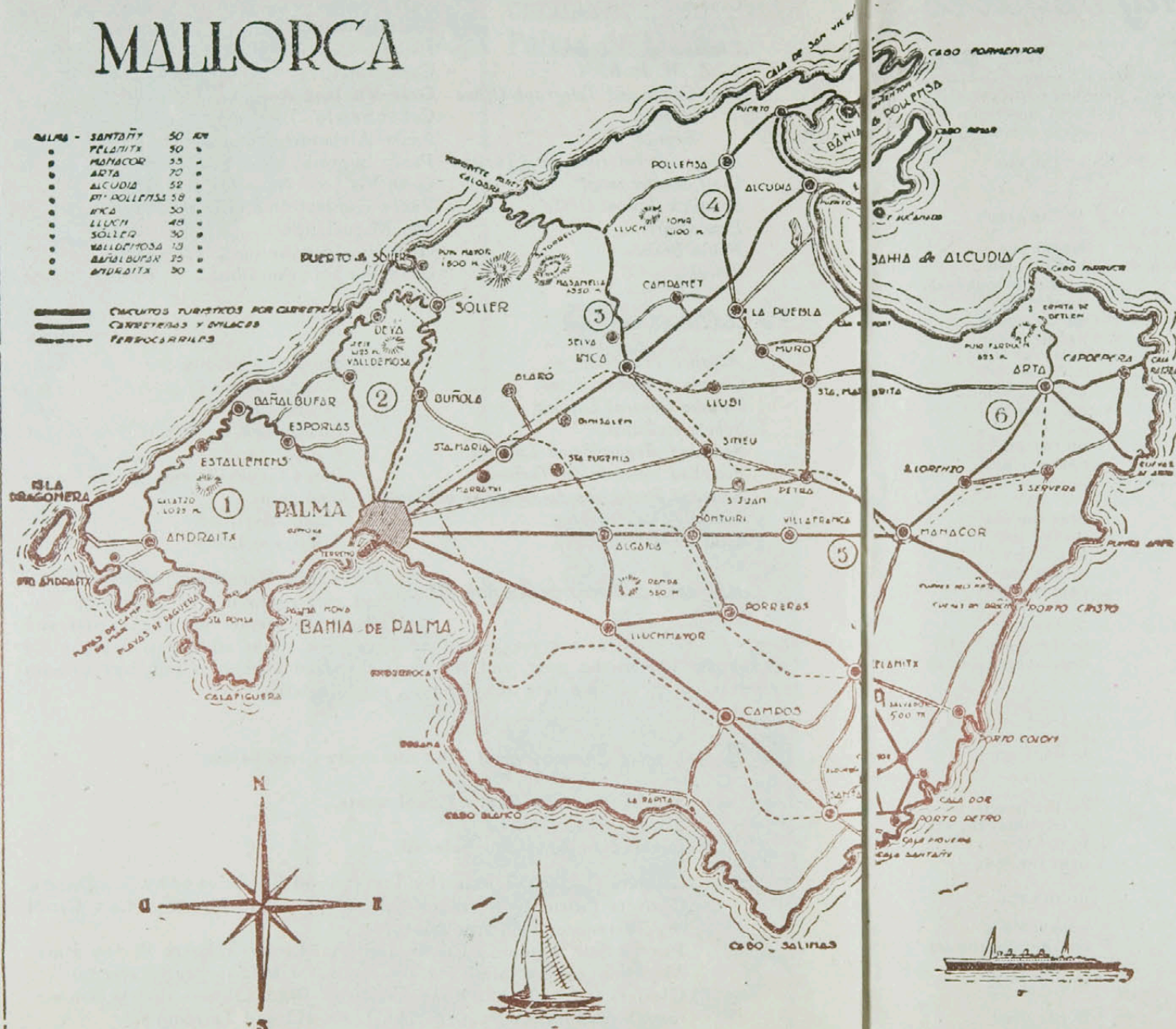
Tramways: San Miguel - La Real - Establiments.
San Miguel - Coliseo.
Puerta San Antonio - Soledad.

Buses: Glorieta (Lírico) Génova (by Terreno and Bonanova or by Son Dureta. Glorieta (Lírico) - Porto Pi - Calamayor - San Agustín - Ca's Catalá (by Terreno or by Paseo Marítimo).
Puerta San Antonio - Cort - Glorieta (Lírico) - Porto Pi (by Paseo Marítimo) (or by Jaime III - Terreno) (or by Sagrera - Terreno).
Glorieta (Lírico) - Via Roma - Olmos - Plaza Olivar - Puerta San Antonio - Sindicato - Porto Pi (by Jaime III and Terreno).
Puerta San Antonio - Av. Alejandro Rosselló - Pont d'Inca.
Puerta San Antonio - Coll d'en Rebassa - Ca'n Pastilla.
Instituto - Via Roma - Jaime III - Son Español - Son Rapiña.
Plaza Mayor - Porto Pi.

MALLORCA

PALMA - SANTANYI	50 KM
• PLEIANTX	50 "
• MAMACOR	55 "
• ARTA	70 "
• ALCUDIA	52 "
• P. POLLENÇA	58 "
• INCA	50 "
• LLUCHI	48 "
• SÓLLER	50 "
• VALLEPISCO	13 "
• BATAIBUSI	25 "
• ANDRATX	30 "

 CAMINOS TURÍSTICOS POR CARRETERAS
 CARRETERAS Y DILACOS
 TERRECIERROS



ESCALA



Tourist Information

For all tourist information about Majorca see
THE LOCAL TOURIST OFFICE
(FOMENTO DEL TURISMO DE MALLORCA)

Paseo del Generalísimo Franco, 34 - 36
 Telephone 5310

or

THE SPANISH STATE TOURIST DEPARTMENT OFFICE

Paseo del Generalísimo Franco, 38 - 40
 Telephone 2216

Palma de Mallorca (Islas Baleares) ESPAÑA
 Please enclose an international reply coupon when
 enquiring by letter

The Direction General for Tourism for Spain have many
 Branch Offices in the principal Capital Cities of the world
 some of which given below.

England	70, Jermyn Street	London S. W. 1
Argentina	Florida, 753 (Galerías Pacífico)	Buenos Aires
Belgium	42, Rue d'Arenberg	Brussels
Canada	3, Queen Street	Toronto 1
France	29, Av. George V	Paris, (VIII ^o)
Germany	Grosse Eschenheimer Strasse 5	Frankfurt/Main
Italy	Piazza di Spagna, 55	Roma
Kuba	Calle Cárcel, 107	La Habana
Marce	Estatuto, 83	Tanger
Mexico	Paseo de la Reforma, 1, 3 y 5	Mexico D. F.
Portugal	Travessa do Salitre, 37	Lisboa
Swede	Smålandsgatan, 11	Stockholm
Switzerland	Claridenhof - Claridenstrasse, 25	Zürich
U. S. A.	23, West Jackson Boulevard	Chicago (Illinois)
	485, Madison Avenue	New York, N. Y. 22
	453, Post Street	San Francisco 2 (California)
	1418 Commerce St.	Dallas (Texas)



Hotels and Boarding Houses

Hotels in Majorca, as in the rest of Spain, are classified as follow. Luxury, 195 to 230 pesetas. 1st class A, 155 to 185 pesetas; 1st class B, 115 to 135 pesetas; 2nd class, 90 to 105 pesetas; 3rd class, 75 to 80 pesetas; Prices for Board Residences are between, 45 and 105 ptas., according to the category.

To these prices must be added the 15% service charge. Those prices indicated above, are the general ones. But some establishments have rooms with special services at superior prices.

PALMA:	Hotel Bahía Palace	Monsieur Palmer	on the sea
Luxury	Hotel Maricel	Ca's Catalá	"
Hotels	Mediterráneo Gran Hotel	Plaza Mediterráneo	"
	Hotel Nixe Palace	Calamayor	on the beach
1st class	Gran Hotel Alcina	M. de la Cenía, 9	on the sea
Hotels A	Hotel Alhambra	Avda. Antonio Maura, 26	in the town
	Gran Hotel Augusta	Carretera Bonanova	overlooking the sea
	Hotel Dux	Calvo Sotelo, 367	on the sea
	Hotel La Cala	Calamayor	on the beach
	Hotel Panorámico	Calamayor	on the sea
	Hotel Príncipe Alfonso	Calamayor	"
	Hotel Rigel	M. de la Cenía, 135 - 137	"
	Hotel Rusiñol	Marqués de la Cenía, 72	near the sea
	Hotel Victoria	Calvo Sotelo, 9	on the sea
1st class	Hotel Bristol	Ca's Catalá	on the sea
Hotels B	Hotel Calamayor	Calamayor	near the sea
	Hotel Capitol	Gran Vía José Antonio, 2	in the town
	Hotel Catalonia	Massanet, 1	"
	Hotel Cenía	M. de la Cenía	near the sea
	Hotel Club Náutico	Puerto	on the sea
	Hotel Colón	31 de Diciembre	in the town
	Hotel Costa Azul	Paseo Marítimo, 8	on the sea
	Hotel El Paso	Son Armadans	near the sea
	Hotel Residencia El Patto	Gomila, 5	"
	Hotel Embajador	Calvo Sotelo, 339	on the sea
	Hotel Jaime I	Paseo Mallorca, 11	in the town
	Hotel Kursaal	Andrea Doria, 2	overlooking the sea
	Hotel Majórica	Calvo Sotelo, 335	"
	Hotel Mirador	M. de la Cenía, 57	"
	Hotel Nacional	M. de la Cenía, 125	"
	Hotel Oasis	Ca'n Pastilla	on the beach
	Hotel Pacifico	Avda. Jaime III	in the town
	Hotel Palma	Pl. García Orell, 14	"
	Hotel Parque	Pl. Jinetes de Alcalá, 2	"
	Hotel Playa d'Or	Ca'n Pastilla	on the beach
	Hotel Portixol	Molinar	overlooking the sea
	Hotel Regina	San Miguel, 189	in the town
	Hotel Terreno - Campomar	San Agustín	near the sea
	Hotel Virginia	Bellver, 4	"
	Hotel Zaida	Paseo Marítimo	on the sea
2nd class	Hotel Altair	Soldado Marrofé	near the sea
Hotels	Hotel Astoria	Pedregal, 5	overlooking the sea
	Hotel Balear	Plaza Mayor	in the town
	Hotel Bella Costa	Calamayor	near the sea
	Hotel Bellamar	Ca's Catalá	"
	Hotel Cannes	Cardenal Pou, 22	in the town
	Hotel Comercio	José Tous Ferrer, 4	"
	Hotel Hidalgo	Calvo Sotelo, 379	on the sea
	Hotel Infanta	Teniente Mulet, 6	near the sea
	Hotel Londres	Gran Vía José Antonio, 11	in the town
	Hotel Marfil	Gariá, 35	overlooking the sea
	Hotel Miramar	Furió, 29	near the sea

2nd class	Hotel Monleón	Vía Roma, 3	in the town
Hotels	Hotel Montecrespo	San Agustín	near the sea
	Hotel Mundial	Conde Sallent, 74	in the town
	Hotel San Remo	Calamayor	on the sea
	Hotel Suizo	Rubi, 20	in the town
	Hotel Tenis	M. de la Cenía, 115	near the sea
	Hotel Términus	Plaza España, 27	in the town
3rd class	Hotel Buenos Aires	Conde Sallent, 109	"
Hotels	Hotel Céntrico	Quint, 5	"
	Hotel Ciudad Jardín	Ciudad Jardín	on the beach
	Hotel Eden - Roc	Versalles, 1	on the sea
	Hotel Ensanche	Blanquerna, 79	in the town
	Hotel Es Puchet	Calamayor	on the beach
	Hotel Gales	Calamayor	near the sea
	Hotel Peninsular	Zanoguera, 4	in the town
	Hotel Perú	Palou y Coll, 18	"
	Hotel San Cayetano	San Cayetano, 15	"
	Hotel Vista Alegre	Vista Alegre	overlooking the sea
	Hotel York	Magallanes, 16	near the sea

BOARD RESIDENCES LUXURY (Palma)

Pensión Americana	Salud, 106 (apls.)	near the sea
Pensión Armadans	Marqués de la Cenía, 54	"
Pensión Atalaya	Cabo Martorell Roca, 14	"
Pensión Bell - Pi	Más, 4	in the town
Pensión Ca'n Pastilla	Ca'n Pastilla	on the sea
Pensión Chipre	Calamayor	near the sea
Pensión Desoto	Avda. Jaime III	in the town
Pensión Emperatriz	San Agustín	near the sea
Pensión Isabel II	Portella, 30 - 32	in the town
Pensión La Torre	Calvo Sotelo, 222	near the sea
Pensión Las Vegas	Calvo Sotelo, 532	overlooking the sea
Pensión Layfor	Paseo Marítimo	"
Pensión Mar Blau	Fray Junípero Serra	"
Pensión Mar - Bosque	Calvo Sotelo, 110	near the sea
Pensión Pèrgola	Calvo Sotelo, 278	"
Pensión Rocamar	Calvo Sotelo, 675	on the sea
Pensión Urbis	Pl. Sta. Catalina Thomas, 10	in the town
Pensión Villa M. ^a del Carmen	Calvo Sotelo, 371	on the sea

BOARD RESIDENCES 1st CLASS (Palma)

Pensión Hostal de la Almoyna	Capiscolato, 2	in the town
Pensión Alomar	Llinás, 4	on the sea
Pensión Argentina	Teatro 10	in the town
Pensión Atlantic	Aragón, 22	"
Pensión Baleos	Blanquerna, 21	"
Pensión Baile	Ca'n Pastilla	on the beach
Pensión Balmes	Ca'n Pastilla	on the sea
Pensión Bosch	Jaime Ferrer, 12	in the town
" (annex)	Casa España, 6	"
Pensión Brondo	Brondo 3	"
Pensión Casa Sueca (Mirabel)	Dos de Mayo, 33	overlooking the sea
Pensión Ca's Catalá	Ca's Catalá	near the sea
Pensión Casa Martín	Calvo Sotelo, 254	"
Pensión Casa Nórdica	Espartero, 49	"
Pensión Casita Blanca	Alférez Cerdá	"
Pensión Condal	Calvo Sotelo, 21	overlooking the sea
Pensión Confort	Paseo Generalísimo, 68	in the town
Pensión Corona	Santa Rita, 33	near the sea
Pensión Corp - Marí	Calvo Sotelo, 337	"
Pensión Costa Alegre	Calvo Sotelo, 558	"
Pensión Ducal	Montserrat, 40	in the town
Pensión La Estancia	Calvo Sotelo, 696	near the sea
Pensión Las Arenas	Ca'n Pastilla	on the sea
Pensión Europa	Velázquez, 12	in the town
Pensión Eva María	Cabo M. Roca, 74	overlooking the sea

Pensión La Granja	Camino Vecinal Génova	near the sea
Pensión El Greco	Vista Alegre	on the sea
Pensión Familiar	Antonio Ribas, 132	in the town
Pensión Gina	Femolares, 11	»
Pensión Gloria	Pelaires, 105	»
Pensión Goyena	Calamayor	near the sea
Pensión Internacional	Olmos, 166	in the town
Pensión La Lonja	Mar, 65	»
Pensión Levante	Coll de'n Rebassa	overlooking the sea
Pensión María Cristina	Calvo Sotelo, 184	near the sea
Pensión Martel	Pedro Martel, 45	in the town
Pensión Menorquina (La)	Santacilia, 11	»
Pensión La Mimosa	Ca's Catalá	overlooking the sea
Pensión Montenegro	Montenegro, 6	in the town
Pensión Monterrey	Camino Bonanova, 66	overlooking the sea
Pensión Monmari	Jaime Ferrer, 39	in the town
Pensión Munchs	Dos de Mayo, 11	overlooking the sea
Pensión Navarra	Navarra, 35	in the town
Pensión Nuredduna	Ausias March, 4	»
Pensión Olivar	San Miguel, 89	»
Pensión Pinos (Los)	Ca'n Pastilla	on the beach
Pensión París-Roma	Bartolomé Pou	in the town
Pensión Portasa (La)	Calvo Sotelo, 301	overlooking the sea
Pensión Pinar	Bosque	in the town
Pensión Porto - Pi	Calvo Sotelo, 428	near the sea
Pensión Playa Azul	Ciudad Jardín	on the beach
Pensión Quijote (El)	Calvo Sotelo, 336	overlooking the sea
Pensión Río	Calvo Sotelo, 323	on the sea
Pensión Son Catleret	Son Catleret	near the sea
Pensión Son Ventura	Coll de'n Rebassa	on the sea
Pensión Sotomayor	Reina Esclaramunda, 7	in the town
Pensión Tànger	General Riera, 22	»
Pensión Terramar	Plaza Mediterráneo, 1	overlooking the sea
Pensión Trianón	Ca'n Pastilla	on the sea
Pensión Tres Hermanas	San Agustín	near the sea
Pensión Valdés	Salud, 9	overlooking the sea
Pensión Versalles	Rafaletas, 27	near the sea
Pensión Viena	Misión, 90	in the town
Pensión Villa Argentina	Garita, 52	overlooking the sea
Pensión Villa Margarita	Soldado Marroig, 12	near the sea
Pensión Villa Marta	Luis Fábregas, 10	overlooking the sea
Pensión Villa Monserrat	Cas Catalá	near the sea
Pensión Villa Mora	Tentente Mulet, 121	»
Pensión Villa Pilar	Calvo Sotelo, 373	»
Pensión Villa Sea	Camino de Génova, 85	on the sea

BOARD RESIDENCES 2^{da} CLASS (Palma)

Pensión Ancora, Calvo Sotelo, 347	Pensión Florida, Avda. Antonio Maura, 18
Pensión Artieda, Portixol - Molinar	Pensión Goya, Estanco, 19
Pensión Venida, B. V. Ramón, 26	Pensión Gual, Lonja, 16
Pensión Azul, Manuel Guasp, 39	Pensión Helios, Francia 1
Pensión Baleares, Plaza García Orell, 16	Pensión Hogar del Viajante, Tamorer
Pensión Bar Deportivo, Olmos, 141	Pensión Hostal des Moli, San Miguel, 44
Pensión Bellver, José Villalonga, 16	Pensión Ibiza, Plaza Navegación, 28
Pensión California, Teniente Mulet, 139	Pensión Ideal, San Felio, 25
Pensión Carmen, Carmen, 61	Pensión Isern, Aragón, 223
Pensión Castilla, San Jaime, 19	Pensión Jai - Per, Ricardo Ankerman, 128
Pensión Central, Ballester, 32	Pensión Mallorquina, Antillón
Pensión Cervantes, Honderos, 121	Pensión Mizar, Montenegro
Pensión Coll, San Bartolomé, 5	Pensión Montecarlo, Reina Constanza, 41
Pensión Colón, Elcano, 28	Pensión Molinos (Los) Calle 14, 20
Pensión Esmeralda, Ricardo Ankerman 30	Pensión Oliver, Benito Pons, 1
Pensión Espiga de Oro	Pensión Palmir, Versalles, 15
Avda. Alejandro Rosselló, 15	Pensión París, Tamorer, 1
Pensión Estrella (La), Aceite, 6	Pensión París, Teatre, 10

Pensión Posada del Mar, Son Catleret, 19	Pensión Soria, San Felio, 27
Pensión Rosamar, Calvo Sotelo, 208	Pensión Tirol, Apuntadores
Fonda Replá, Rincón, 5	Pensión Trébol, Ferrer de Pallarés
Pensión Rizzl, Apuntadores, 8	Pensión Valencia, Ramón y Cajal, 31
Pensión Santander, San Andrés, 19	Pensión Vera Mar, Carretera Lluchmayor
Pensión San Luis, San Jaime, 19	Pensión Villaverde, José Villalonga, 25
Pensión Scat, Industria 34	Pensión Villa Maite, Calvo Sotelo, 208
Pensión Sol Mar, Portasa, 4	

PLAYA DE EL ARENAL (Palma) a 10 kms. from the town.

Hotel Acapulco (1. ^a A)	on the beach	Pensión Brisas (1. ^a)	on the beach
Hotel Biarritz (1. ^a B)	near the sea	Hostal Las Gaviotas (1. ^a)	»
Hotel Copacabana (1. ^a B)	on the beach	Pensión Maravillas (1. ^a)	»
Hotel Lido (1. ^a B)	»	Pensión Tivoli (1. ^a)	»
Hotel Los Angeles (2. ^a)	»	Pensión Los Tamarindos (2. ^a)	»
Hotel San Francisco (2. ^a)	»	Pensión Santa Bárbara (2. ^a)	»
Hotel Arenal (3. ^a)	»	Pensión Solimar (2. ^a)	»
Pensión Bonet (1. ^a)	»		

HOTELS AND PENSIONS DANS ISLE

Bañalbufar, 25 kms. de Palma		Deyá, 26 kms. de Palma	
Hotel Costa Mar (3. ^a)	near the sea	Pensión Ca'n Quet (1. ^a)	in the country
Hotel Marivent (3. ^a)	»	Pensión Miramar	near the sea
Pensión Baronia (2. ^a)	»	Pensión Villa Verde	»
Bendinat, 10 kms. Palma		Estallenchs, 32 kms. de Palma	
Hotel Bendinat (1. ^a A)	on the beach	Pensión Ca'n Manuel (2. ^a)	on the sea
Cala Fornells (Calviá) 24 kms. de Palma		Pensión Maristel (2. ^a)	»
Hotel Cala Fornells (2. ^a)	on the beach	Felanitx, 50 kms. de Palma	
Cala Millor (Son Servera), 70 kms. Palma		Pensión Santueri (2. ^a)	in the town
Hotel Eureka (3. ^a)	on the beach	Formentor (Pollensa), 70 kms. de Palma	
Cala D'Or (Santanyí), 63 kms. de Palma		Hotel Formentor (lux)	on the beach
Hotel Cala D'Or (1. ^a)	on the beach	Galilea, 22 kms. de Palma	
Hotel Cala Gran (2. ^a)	»	Pensión Eolo	in the town
Pensión Los Arcos (2. ^a)	near the sea	Illetas (Calviá), 10 kms. de Palma	
Cala Figuera (Santanyí), a 55 kms. Palma		Hotel Illetas (1. ^a A)	on the sea
Hostal Bona Vista (2. ^a)	on the sea	Hostal Bonsol (1. ^a B)	»
Fonda Cala Figuera (2. ^a)	»	Inca, 29 kms. de Palma	
Cala Ratjada (Capdepera) 80 kms. Palma		Hotel España (3. ^a)	in the town
Hotel Castillo (1. ^a B)	on the beach	Pensión Victoria (2. ^a)	»
Hotel Son Moll (1. ^a B)	near the sea	La Puebla, 42 kms. de Palma	
Residenc. Cala Ratjada (1. ^a)	»	Fonda Alomar (2. ^a)	in the town
Pensión Ca's Bombu (1. ^a)	on the sea	Lluch - Alcari (Deyá), 29 kms. de Palma	
Pensión El Cortijo (2. ^a)	»	Hotel Costa d'Or (3. ^a)	on the sea
Pensión Miramar (2. ^a)	»	Magaluf (Calviá) 20 de kms. Palma	
Cala S. Vicente (Pollensa), 57 kms. Palma		Pensión El Caribe (lux)	on the beach
Molins Hotel (1. ^a A)	on the beach	Mal Pas (Alicudia), 57 kms. de Palma	
Hotel Cala San Vicente (1. ^a B)	»	Pensión Mal Pas (1. ^a)	near the sea
Pensión Los Pinos (lux)	»	Pensión Mariposa (2. ^a)	»
Pensión Niu (1. ^a)	»	Manacor, 50 kms. de Palma.	
Calobra (La), 65 kms. de Palma		Fonda Jacinto (1. ^a)	in the town
Pensión Hostal La Calobra (lux)	on the sea	Paguera (Calviá), 23 kms. de Palma	
Camp de Mar (Andraitx), 26 kms. Palma		Hotel Villamil (1. ^a A)	on the beach
Hotel Camp de Mar (1. ^a A)	on the beach	Hotel Bahía Club (1. ^a B)	»
Hotel Playa (2. ^a)	»	Hotel Bella Colina (2. ^a)	near the sea
Campos del Puerto, 52 kms. de Palma		Hotel La Carabela (2. ^a)	on the beach
Fonda Balneario S Juan (2. ^a)	in the country	Hotel Malgrat (2. ^a)	»
Ca'n Picafort (La Puebla), 63 kms. Palma		Pensión Son Calma (lux)	near the sea
Hotel Alomar (3. ^a)	near the sea	Pensión Hostal Playas (1. ^a)	on the beach
Canyamel (Capdepera), 78 kms. de Palma		Pensión Niza (1. ^a)	»
Hotel Canyamel (1. ^a B)	on the beach	Pensión La Noia (1. ^a)	»

Pensión Cupido (2. ^a)	near the sea	Pensión La Plaza (1. ^a)	near the sea
Pensión La Florida (2. ^a)	on the beach	Pensión Rex (1. ^a)	"
Pensión M. ^a Eugenia (2. ^a)	"	Puerto de Sóller , 35 kms. de Palma	
Pensión Porcel (2. ^a)	"	Hotel F'dén (1. ^a B)	on the beach
Palma Nova (Calviá), 14 kms. de Palma		Hotel Espléndido (1. ^a B)	"
Pensión Palma Nova (lux)	on the beach	Hotel Costa Brava (2. ^a)	"
Pensión Pinos Mar (1. ^a)	"	Hotel Marbella (2. ^a)	"
Portals Nous (Calviá), 10 kms. de Palma		Hotel Mare Nostrum (2. ^a)	on the sea
Pensión Los Pinos (1. ^a)	on the beach	Hotel Marina (2. ^a)	on the beach
Porto-Cristo (Manacor), 63 kms. de Palma		Hotel Marisol (2. ^a)	"
Hotel Felip (3. ^a)	on the beach	Hotel Miramar (2. ^a)	"
Hotel Perelló (3. ^a)	"	Hotel Roma (2. ^a)	"
Pensión Porto-Cristo (1. ^a)	"	Hotel Generoso (3. ^a)	"
Pensión Froniera (2. ^a)	"	Pensión el Faro (1. ^a)	on the sea
Puerto de Alcudia , 55 kms. de Palma		Pensión Rosabel (1. ^a)	"
Golf Hotel (1. ^a B)	on the beach	Pensión La Primavera (2. ^a)	near the sea
Hotel Mar y Sol (3. ^a)	on the sea	Pensión Posada del Mar (2. ^a)	on the sea
Hotel Miramar (3. ^a)	"	San Telmo (S'Arracó), 37 kms. de Palma	
Pensión Hostel del Mar (lux)	"	Pensión Bosque Mar (1. ^a)	on the sea
Pensión Marina (2. ^a)	"	Pensión La Dragonera (2. ^a)	"
Puerto de Andraitx , 34 kms. de Palma		Ses Salines (Campos), 50 kms. de Palma	
Hotel Brismar (1. ^a B)	on the sea	Hotel Hostel de Los Estanques (2. ^a)	on the beach
Pensión Moderna (1. ^a)	near the sea	Pensión Playa (2. ^a)	near the sea
Puerto de Pollensa , 58 kms. de Palma		Sóller , 30 kms. de Palma	
Hotel Eolo (1. ^a A)	on the sea	Hotel El Guía (3. ^a)	in the town
Hotel Uyal (1. ^a A)	"	Hotel Ferrocarril (3. ^a)	"
Hotel Illa D'Or (1. ^a B)	"	Pensión Americana (1. ^a)	"
Hotel Miramar (1. ^a B)	"	Pensión Avenida (1. ^a)	"
Hotel Pollentia (1. ^a B)	"	Pensión Gran Vía (1. ^a)	"
Hotel Sis Píns (1. ^a B)	"	Pensión Nadal (1. ^a)	"
Hotel Marina (2. ^a)	"	Pensión Comercio (2. ^a)	"
Hotel Bellavista (3. ^a)	"	Pensión Las Golondrinas (2. ^a)	"
Hotel del Puerto (3. ^a)	"	Pensión Majestic (2. ^a)	"
Pensión Luz del Mar (1. ^a)	near the sea	Pensión Sóller (2. ^a)	"
		Valldemosa , 17 kms. de Palma	
		Pensión Hospedaje del Artista (1. ^a)	in the town



The "FOMENTO DEL TURISMO DE MALLORCA" and "OFICINA DE INFORMACION DE LA DIRECCION GENERAL DEL TURISMO" gives all information regarding Hotels, but does not take any bookings for them.

Important: In addition to those listed above, lodgings of a more simple kind may be found in practically all parts of the interior of the island, and also in the coastal parts (beaches, caves, smallports, etc.).

Cours and Excursions

Tourists can see the beautiful spots and places of interest in the island in comfort and in modern luxury coaches. Enquiries should be made at the principal Tourist Agencies or the office of the Sociedad Fomento del Turismo. The principal Tours and Excursions are outlined below.

MONDAY AND THURSDAY

(From 1st July to 30th September: Daily, except Sunday).

Excursion to Valldemosa (visiting the Royal Carthusian Monastery and exhibition of folk dancing), Miramar Coast, Son Marroig and the harbour of Sóller (lunch). On the return journey to Palma a call is made to visit Raxa or Alfabia gardens.

Price, including lunch: 176 pesetas.

WEDNESDAY AND SUNDAY

(From 1st July to 30th September: Daily, except Saturday).

Manacor (Archaeological Museum), Porto Cristo (a visit is made to the Caves of Drach and Hams).

Price, including lunch: 197 pesetas.

TUESDAY, FRIDAY AND SUNDAY

(From 1st July to 30th September: Tuesday, Thursday, Friday & Sunday).

Formentor (beach), harbour of Pollensa (lunch). Tuesday and Friday, exhibition of folk dancing. Other days a visit is made to the Caves of Campanet.

Price, including lunch: 186 pesetas.

TUESDAY, AND SATURDAY

(From 1st July to 30th September: Tuesday, Thursday & Saturday).

Lluch (Museum of the Monastery,) La Calobra (beach and lunch) and Torrente de Pareys.

Price, including lunch: 216 pesetas.

TUESDAY AND SATURDAY

In the morning, on foot (principal Buildings and Museums).

Price: 40 pesetas.

In the afternoon, by coach visit of the outskirts of Palma (Castle of Bellver, Mulet House, Caves of Genova).

Price: 80 pesetas.

TUESDAY, THURSDAY AND FRIDAY

(Only from 1st July to 30th September).

Manacor, Porto Cristo (a visit is made to the Caves of Drach and Artá).

Price, including lunch: 232 pesetas.

SATURDAY

Canyamel (lunch and visit Caves of Artá).

Price, including lunch: 186 pesetas.

SATURDAY

Camp de Mar (beach).

Price: 51 pesetas.

SATURDAY (only from 1st July to 30th September)

Algaida (exhibition of folk dances), Monastery of Cura

Price: 71 pesetas.





PUBLISHED BY THE "FOMENTO DEL TURISMO DE MALLORCA"
PALMA DE MALLORCA

Paseo Generalísimo Franco, 34 - 36
Teléfono 5310

IMPORTANT :

The details contained in the current pamphlet are correct at the date going to press. Whilst making every effort to keep its information up-to-date, the Society of Fomento de Turismo, cannot hold itself responsible for alterations which maybe made after that time.



Nº 1051

HABITACION }
 CHAMBRE } NUM. 101
 ROOM }
 ZIMMER }

1.ª CATEGORIA

DIR. TELEG.: CALAMAYOROTEL

TELEFONOS 6700-1-2 - 2203

Palma de Mallorca

(ESPAÑA)

Sr. D. BENEDIKTSSON

SE SUPLICA EL PAGO DE LA FACTURA EL DÍA DE SU PRESENTACION ● ON EST PRIE DE PAYER LA FACTURE LE JOUR DE SA PRESENTATION ● PLEASE PAY THE WEEKLY BILL ON PRESENTATION

Mes <u>Mayo</u> de 195 <u>8</u>	DIA <u>18</u>	DIA <u>19</u>	DIA <u>20</u>	DIA <u>21</u>	DIA <u>22</u>	DIA <u>23</u>	DIA <u>24</u>
Pensión	550-	550-	550-	550	550	550	550-
Habitación - Room							
Desayunos - Breakfast							
Extras - Desayunos							
Almuerzos - Lunches							
Comidas - Dinners							
Invitados - Guests							
A la carta							
Comedor { Vinos, Aguas Minerales Cervezas, Zumos Fruta.	18	18	18	18	18	18	18
Bar { Cafés, Tes, etc. Licores, Liguors, Refrescos Champagnes	20-	20-	20-	20-	20-	20-	20-
Servicio coche							
Baños - Baths							
Lavados - Laundry							12-
Conferencias telef.							
Telegramas							
Varios - Miscellaneous							
Impuestos y Timbre							
Bar playa							
Total del día, Ptas.	588	678	588	588	588	588	600-
Rapport		588	1236	1824	2412	3000	3588
TOTAL. (SERVICIO INCLUIDO)							4188

PH. ANDERSON

NO OLVIDE VD. DEJAR LA LLAVE. ● N'OUBLIEZ PAS DE LAISSER LA CLEF. ● DO NOT FORGET TO LEAVE THE KEY
 SE PREGA NON PORTAR VIA LA CHIAVE. ● SITTE VERGESSEN SIE NICHT DEN SCHLÜSSEL ABZUGEBEN. BON BOYAGE...

Einkaskjalasain Bjarna Benediktssonar © Borgarskjalasain Reykjavikur