



Dagbók Carls Olsens 1935

Carl Olsen - Dagbók 1935 – Roneo indexed Diary 1935

ATH:

Fáar dagbókarfærslur eru 1935. Frá og með febrúar eru því aðeins birtar opnur sem innihalda færslur.

Tekið af vef Borgarskjalasafnsins

www.borgarskjalasafn.is

Einkaskjalasafn nr. 418

Carl Olsen

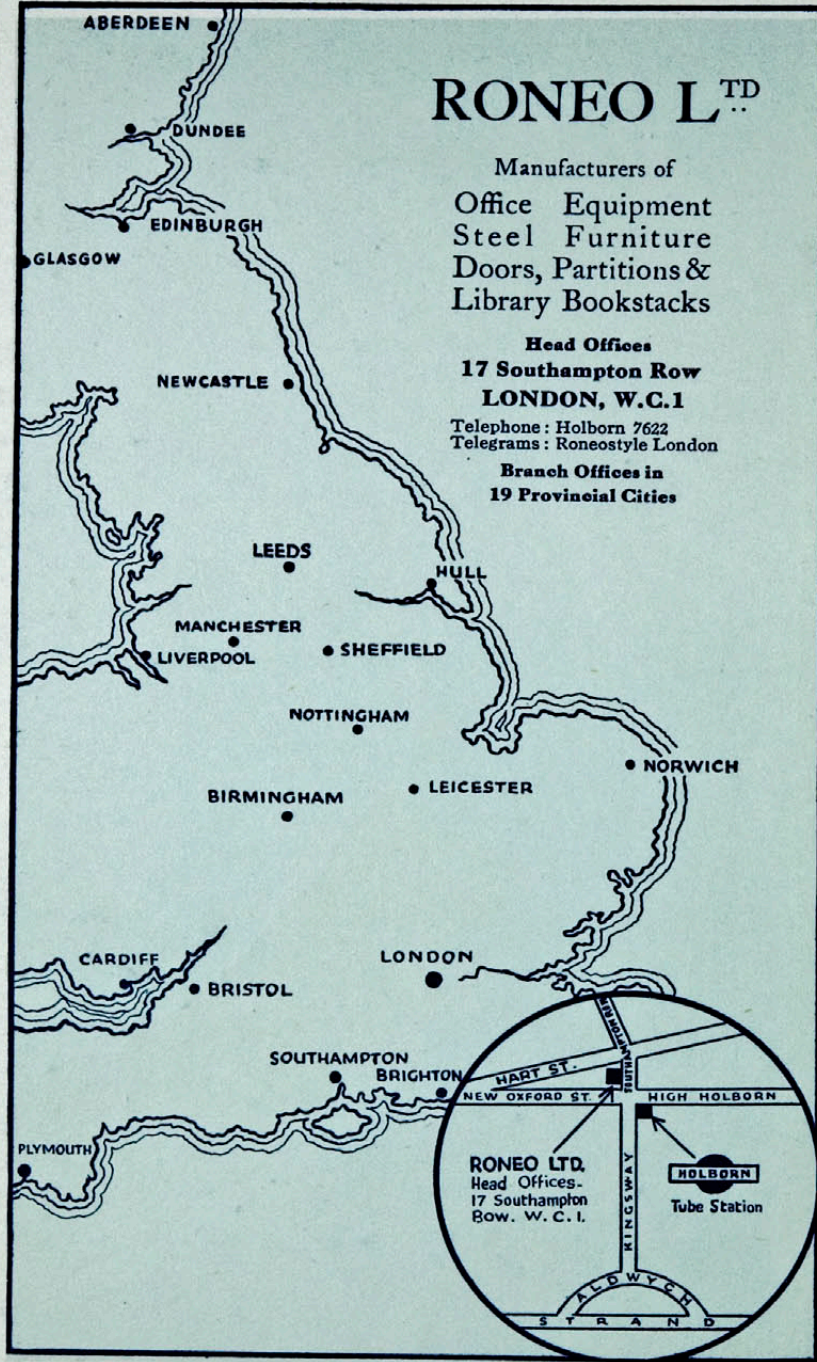
Askja 6

© Borgarskjalasafn Reykjavíkur

1935

RONEO
TRADE MARK
INDEXED
DIARY
1935

Einkaskjalasafn Carls Olsens © Borgarskjalasafn Reykjavíkur



RONEO LTD.

Manufacturers of
Office Equipment
Steel Furniture
Doors, Partitions &
Library Bookstacks

Head Offices
17 Southampton Row
LONDON, W.C.1

Telephone: Holborn 7622
Telegrams: Roneostyle London

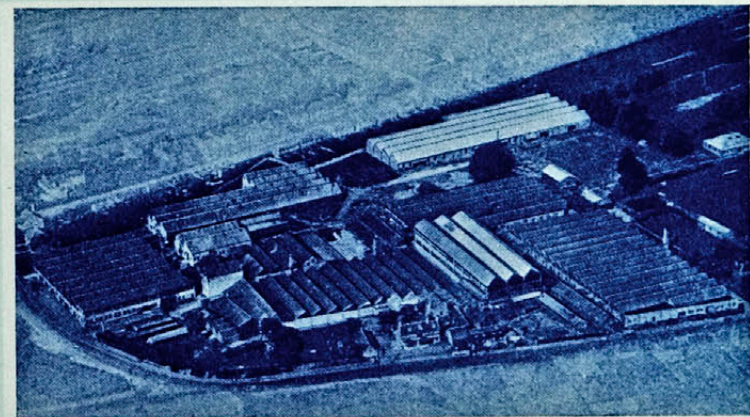
Branch Offices in
19 Provincial Cities



*“British
Made”*

This label which you will find on the wrappings of Roneo Products indicates their place of origin — at the Roneo Works, Romford, Essex. All Roneo Office Appliances, Steel Furniture and Supplies are manufactured in these factories, shown in the photo below, which cover 12 acres of ground and give employment to over 1,000 British work-people. The high standards of quality and workmanship rightly associated with the term “British Made” are strictly adhered to.

Buy RONEO.—Buy BRITISH, and get the best value-for-money obtainable.



PAT. No. 13372/12
JANUARY

FEBRUARY

MARCH

APRIL

MAY

RONEO
TRADE MARK
INDEXED
DIARY
1935



PUBLISHED AND PRINTED BY
RONEO LTD., 17 SOUTHAMPTON ROW,
LONDON, W.C.1





With a Roneo Duplicator you can make timely, frequent and **personal** contact with thousands of otherwise inaccessible prospects—a face to face talk, as it were, for the price of a stamp. You can seize opportunities while they are hot, for at a moment's notice the Roneo Duplicator reproduces your sales messages at the rate of thousands of perfect copies per hour.

THE RONEO DUPLICATOR

RONEO EQUIPMENT
TRADE MARK



Equipped with Roneo Steel

Midland Bank, Head Offices, London, E.C.

- STEEL CABINETS**
- STEEL DESKS**
- STEEL CUPBOARDS**
- STEEL TABLES**
- STEEL SHELVING**
- Etc. Etc.**

In the long run Steel Equipment has always proved cheaper than wood, but to-day, reductions in cost have brought prices of Roneo Steel Furniture and Fittings lower than ever before. Roneo Steel Equipment will not burn, thus reducing or eliminating fire risks; it cannot rot or warp and is almost indestructible.

RONEO EQUIPMENT
TRADE MARK



Roneotype Dept. of a well known manufacturing company

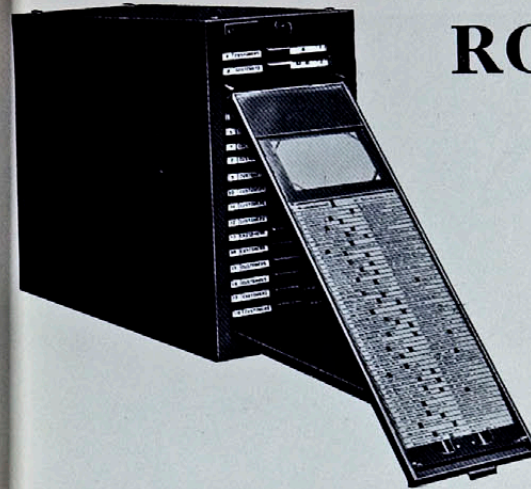
THE RONEOTYPE OFFICE PRINTING MACHINE

IF your printing costs are too high, and there are delays and other irritations, instal a Roneotype Office Printing Machine. Make it do all your printing on the premises—at a moment's notice—at the rate of thousands per hour—at a saving of at least 40% of printers' prices.

Personal sales letters, last minute offers, urgent price lists, booklets, labels, letterheads, leaflets—all done by the Roneotype at little more than the cost of ink and paper.

RONEO EQUIPMENT

TRADE MARK



RONEODEX The X-ray of Business

**ESTABLISHES FACTS
ELIMINATES
GUESSWORK**

Reveals vital facts clearly which, in book or ordinary card-index records, are hidden and extracted with difficulty.

Records can be maintained in **half the time.**

No loss or mis-filing of cards.

Coloured Signals **automatically** show essential data.

Write to-day
for
illustrated
folder

An essential aid to Business Control

Necessary action can be taken immediately as the record is always up-to-date and the state of affairs is seen at a glance.

For every record:—

1. Customers Record

You can see at a glance ALL those who have not purchased from you recently.

2. Ledger

You can see at a glance those accounts which are not being paid promptly and are three, six, or more months in arrears. Invaluable for hire purchase accounts.

3. Stock Record

You can see at a glance those stocks which are too small, too big, slow moving, and so on.

4. Works Record

You can see at a glance the stage of progress of each and every job. Facilitates following up orders which are behindhand or urgent.

RONEO EQUIPMENT

TRADE MARK

JANUARY

DIMANCHE—6 Janvier, 1935

6-359

DOMINGO—6 de Enero de 1935

SUNDAY—January 6th, 1935

Sun rises 8.5; sets 4.6

Lighting up 4.36

High Water London Bridge 2.4 a.m.; 2.36 p.m.

Soren has Helga Guindal 4 I.

Edna Klode H. V. □ H. G.
bygning has jo. Sak m/ Arnd
after Kl. 11 1/2

LUNDI—7 Janvier, 1935

7-358

LUNES—7 de Enero de 1935

MONDAY—January 7th, 1935

Sun rises 8.5; sets 4.7

Lighting up 4.37

High Water London Bridge 2.49 a.m.; 3.23 p.m.

Caros Fjeldsted vil acceptere Kr. 17000.-
inden Præst. (høde denne
udgaa af det Beløb, som
'Udvejel. man prædrage
svært for til Prival (se ubar)

Breve fra s. Laurzant
Fris
Kroll.
Victor Anders
beide.
Kalling

6
7
8
9
10
11
12
13
14
15
16
17
18
19
20
21
22
23
24
25
26
27
28
29
30
31

FEBRUARY

MARCH

APRIL

MAY

JANUARY

MARDI—8 Janvier, 1935

8-357

MARTES—8 de Enero de

TUESDAY—January 8th, 1935

Sun rises 8.5; sets 4.9 Lighting up 4.39 High Water London Bridge 3.36 a.m.; 4.13 p.m.

Steinþór Marteinsson fiki, Samnerhóide Rofary
ferie í dag & rejsa w/ Þesja
til Fiskriðsþjónd.

Verzlunarf. Þorikfirðinga
w/ Þesja 4/1.
1 gata, Síman Ky.

[Faint handwritten notes at the bottom of the page]

MERCREDI—9 Janvier, 1935

9-356

MIÉRCOLES—9 de Enero de 1935

WEDNESDAY—January 9th, 1935

Sun rises 8.4; sets 4.10 Lighting up 4.40 High Water London Bridge 4.23 a.m.; 5.2 p.m.

[Faint handwritten notes on the right page]

8
9
10
11
12
13
14
15
16
17
18
19
20
21
22
23
24
25
26
27
28
29
30
31

FEBRUARY

MARCH

APRIL

MAY

JANUARY

JEUDI—10 Janvier, 1935

10-355

THURSDAY—January 10th, 1935

Sun rises 8.4; sets 4.11 Lighting up 4.41 High Water London Bridge 5.11 a.m.; 5.53 p.m.

[Faint handwritten notes, mostly illegible]

JUEVES—10 de Enero de 1935

VIENRES—11 Janvier, 1935

11-354

FRIDAY—January 11th, 1935

Sun rises 8.3; sets 4.13 Lighting up 4.43 High Water London Bridge 5.58 a.m.; 6.42 p.m.

Hellberg gave for Kléon. Beland 29/1.

O. K. Frapjard. tillyder:

250/400 pty. Wiskalid 22 tails

I 9/35 II 9/30 pub. Dr. Alex. til

Thorvaldur eller Kléon.

Vi þurva 5% for Crank. Cam.

Belating i Bank Kléon. nok

R/L.

10
11
12
13
14
15
16
17
18
19
20
21
22
23
24
25
26
27
28
29
30
31

*Tilleg. fra Langer nun at afrejse fra
Leith gullfoss 21/1 eller Brisarfoss 1/2.*

SAMEDI—12 Janvier, 1935

12-353

SÁBADO—12 de Enero de 1935

SATURDAY—January 12th, 1935

Sun rises 8.3; sets 4.14 Lighting up 4.44 High Water London Bridge 6.45 a.m.; 7.32 p.m.

Frosten Rosenberg.

Ol. Þrappé: Vi þann Fylladala esp.
Fisken frá O.K., hris vi
þann selja.

Fjóru Hagvinnu. Þegar allur Fiskur
frá gögri. Þann mannske
stíjari Þrappé þv.

JANUARY

DIMANCHE—13 Janvier, 1935

13-352

DOMINGO—13 de Enero de 1935

SUNDAY—January 13th, 1935

Sun rises 8.2; sets 4.16 Lighting up 4.46 High Water London Bridge 7.38 a.m.; 8.30 p.m.

12
13
14
15
16
17
18
19
20
21
22
23
24
25
26
27
28
29
30
31

FEBRUARY

MARCH

APRIL

MAY

Sun rises 8.1; sets 4.17 Lighting up 4.47 High Water London Bridge 8.45 a.m.; 9.43 p.m.

Galt-fiske kaupverð.
Förskningun kann ekki
aftröppuð. Umhúðun fyrir
Kerfiarfarir

Húsgærd.

Bati Kaffe 46/6. 50 kg. cif.
Malning " 47/6 " "

SI
61

Telegr. Búger:

húsumt. my bris-mótt he glid
se yan gullfoss

Sun rises 8.0; sets 4.19 Lighting up 4.49 High Water London Bridge 10.6 a.m.; 10.52 p.m.

JANUARY

MERCREDI—16 Janvier, 1935

16-349

MIÉRCOLES 16 de Enero de 1935

WEDNESDAY—January 16th, 1935

Sun rises 8.0; sets 4.20 Lighting up 4.50 High Water London Bridge 11.18 a.m.; 11.53 p.m.

Faint handwritten notes in Icelandic, including "Lagurinn", "Bætur", and "Hafnar".

JEUDI—17 Janvier, 1935

17-348

JUEVES—17 de Enero de 1935

THURSDAY—January 17th, 1935

Sun rises 7.99; sets 4.22 Lighting up 4.52 High Water London Bridge — a.m.; 12.22 p.m.

JULY

FEBRUARY

MARCH

16
17
18
19
20
21
22
23
24
25
26
27
28
29
30
31

APRIL

MAY

JANUARY

VENDREDI—18 Janvier, 1935

18-347

VIERNES—18 de Enero de 1935

FRIDAY—January 18th, 1935

Sun rises 7.58; sets 4.24 Lighting up 4.54 High Water London Bridge 12.48 a.m.; 1.14 p.m.

18
19

VIERNES—19 Janvier, 1935

19-346

SÁBADO—19 de Enero de 1935

SATURDAY—January 19th, 1935

Sun rises 7.57; sets 4.25 Lighting up 4.55 High Water London Bridge 1.34 a.m.; 1.58 p.m.

JULY

FEBRUARY

MARCH

18

19

20

21

22

23

24

25

26

27

28

29

30

31

JANUARY

DIMANCHE—20 Janvier, 1935

20-345

DOMINGO—20 de Enero de 1935

LUNDI—21 Janvier, 1935

21-344

LUNES—21 de Enero de 1935

SUNDAY—January 20th, 1935

MONDAY—January 21st, 1935

Sun rises 7.56; sets 4.27

Lighting up 4.57

High Water London Bridge 2.13 a.m.; 2.34 p.m.

Sun rises 7.55; sets 4.28

Lighting up 4.58

High Water London Bridge 2.46 a.m.; 3.7 p.m.

81
81

JULY

FEBRUARY

MARCH

APRIL

20
21
22
23
24
25
26
27
28
29
30
31

JANUARY

MARDI—22 Janvier, 1935

22-343

MARTES—22 de Enero de 1935

TUESDAY—January 22nd, 1935

Sun rises 7.54; sets 4.30 Lighting up 5.0 High Water London Bridge 3.13 a.m.; 3.39 p.m.

MERCREDI—23 Janvier, 1935

23-342

MIÉRCOLES—23 de Enero de 1935

WEDNESDAY—January 23rd, 1935

Sun rises 7.52; sets 4.32 Lighting up 5.2 High Water London Bridge 3.45 a.m.; 4.14 p.m.

*Kænnið er í Hafary Kl. 7. (Kl. 15-
7a PM).*

09
18

22
23
24
25
26
27
28
29
30

JULY

FEBRUARY

MARCH

APRIL

MAY

JANUARY

JEUDI—24 Janvier, 1935

24-341

JUEVES—24 de Enero de 1935

THURSDAY—January 24th, 1935

Sun rises 7.51; sets 4.34

Lighting up 5.4

High Water London Bridge 4.15 a.m.; 4.44 p.m.

Handwritten notes in blue ink, mostly illegible.

22
23

VENDREDI—25 Janvier, 1935

25-340

VIERNES—25 de Enero de 1935

FRIDAY—January 25th, 1935

Sun rises 7.50; sets 4.36

Lighting up 5.6

High Water London Bridge 4.48 a.m.; 5.16 p.m.

Handwritten notes in blue ink, mostly illegible.

24
25
26
27
28
29
30
31

JULY

FEBRUARY

MARCH

APRIL

MAY

JANUARY

SAMEDI—26 Janvier, 1935

26-339

SÁBADO—26 de Enero de 1935

SATURDAY—January 26th, 1935

Sun rises 7.48; sets 4.37

Lighting up 5.7

High Water London Bridge 5.17 a.m.; 5.44 p.m.

26
32

*Inger kann iafhen m. Jallpass.
þri Leikhr.*

DOMINGO—27 Janvier, 1935

27-338

DOMINGO—27 de Enero de 1935

SUNDAY—January 27th, 1935

Sun rises 7.47; sets 4.39

Lighting up 5.9

High Water London Bridge 5.48 a.m.; 6.19 p.m.

JULY

FEBRUARY

MARCH

APRIL

MAY

26
27
28
29
30
31

JANUARY

LUNDI—28 Janvier, 1935 28-337

MONDAY—January 28th, 1935

Sun rises 7.46; sets 4.41 Lighting up 5.11 High Water London Bridge 6.25 a.m.; 7.1 p.m.

LUNES—28 de Enero de 1935

MARDI—29 Janvier, 1935 29-336

MARTES—29 de Enero de 1935

TUESDAY—January 29th, 1935

Sun rises 7.44; sets 4.43 Lighting up 5.13 High Water London Bridge 7.21 a.m.; 8.3 p.m.

*in fra Bæ fil Spuningsatv. f. 15-487.
Landsb. mf. kr. 1063.78 rekken
idag*

JULY

FEBRUARY

MARCH

APRIL

MAY

28
29
30
31

JANUARY

MERCREDI—30 Janvier, 1935

80-335

MIÉRCOLES—30 de Enero de 1935

WEDNESDAY—January 30th, 1935

31-334

JUEVES—31 de Enero de 1935

THURSDAY—January 31st, 1935

Sun rises 7.43; sets 4.44 Lighting up 5.14 High Water London Bridge 8.40 a.m.; 9.30 p.m.

Sun rises 7.41; sets 4.46 Lighting up 5.16 High Water London Bridge 10.20 a.m.; 10.58 p.m.

82
82

JULY

FEBRUARY

MARCH

APRIL

MAY

MARDI—26 Février, 1935

57-308

MARTES—26 de Febrero de 1935

TUESDAY—February 26th, 1935

Sun rises 6.54; sets 5.33 Lighting up 6.3 High Water London Bridge 5.49 a.m.; 6.16 p.m.

JANUARY

FEBRUARY

MERCREDI—27 Février, 1935

58-307

MIÉRCOLES—27 de Febrero de 1935

WEDNESDAY—February 27th, 1935

Sun rises 6.52; sets 5.35 Lighting up 6.5 High Water London Bridge 6.48 a.m.; 7.20 p.m.

M. 1 flög geg frá Tempelhof Berlin

M. 3 landaðu geg í Kópavogum Lufthavn.

Arky. 55. -

1

2

3

4

5

6

7

8

9

0

1

2

3

4

5

6

7

8

9

0

1

2

3

4

5

6

7

8

9

0

26

27

28

JULY

AUGUST

MARCH

SEPTEMBER

APRIL

OCTOBER

MAY

NOVEMBER

JUNE

DECEMBER

MARDI—12 Mars, 1935

71-294

MARTES—12 de Marzo de 1935

TUESDAY—March 12th, 1935

Sun rises 6.24; sets 5.57 Lighting up 6.27 High Water London Bridge 6.31 a.m.; 6.59 p.m.

*Vor i Nýbóling. F. & besøge damp.
møllen (Dir. Hingze).*

JANUARY

FEBRUARY

MARCH

MERCREDI—13 Mars, 1935

72-293

MIÉRCOLES—13 de Marzo de 1935

WEDNESDAY—March 13th, 1935

Sun rises 6.21; sets 5.59 Lighting up 6.29 High Water London Bridge 7.32 a.m.; 8.3 p.m.

*Vor í Nýbóling. F. & besøge damp.
møllen (Dir. Hingze).*

JULY

AUGUST

SEPTEMBER

OCTOBER

APRIL

NOVEMBER

MAY

DECEMBER

JUNE

- 12
- 13
- 14
- 15
- 16
- 17
- 18
- 19
- 20
- 21
- 22
- 23
- 24
- 25
- 26
- 27
- 28
- 29
- 30

JEUDI—14 Mars, 1935

73-292

JUEVES—14 de Marzo de 1935

THURSDAY—March 14th, 1935

Sun rises 6.19; sets 6.1

Lighting up 6.31

High Water London Bridge 8.58 a.m.; 9.39 p.m.

VENDREDI—15 Mars, 1935

74-291

VIERNES—15 de Marzo de 1935

FRIDAY—March 15th, 1935

Sun rises 6.17; sets 6.3

Lighting up 6.33

High Water London Bridge 10.35 a.m.; 11.10 p.m.

Gifts Gullfaro from Klabou. (ms. U. a. Hallgr. Þor.)

JANUARY

FEBRUARY

MARCH

JULY

AUGUST

SEPTEMBER

APRIL

OCTOBER

MAY

NOVEMBER

JUNE

DECEMBER

14
15
16
17
18
19
20
21
22
23
24
25
26
27
28
29
30

SAMEDI—16 Mars, 1935

75-290

SÁBADO—16 de Marzo de 1935

SATURDAY—March 16th, 1935

Sun rises 6.15; sets 6.4 Lighting up 6.34 High Water London Bridge 11.46 a.m.; — p.m.

Kl. 9 fljúg geg frá Kópavogi Lufðróttunum

Kl. 12 1/2 landaðu við í Akureyri.

Kl. 1 1/4 frá Akureyri

Kl. 1 1/2 " Þykkvabætur

Kl. 3 1/2 í Laugavegi Sk. 240.-

DIMANCHE—17 Mars, 1935

76-289

DOMINGO—17 de Marzo de 1935

SUNDAY—March 17th, 1935

ST. PATRICK'S DAY

Sun rises 6.12; sets 6.6 Lighting up 6.36 High Water London Bridge 12.13 a.m.; 12.41 p.m.

Kom til Leith. Kl. 4¹⁵ Form.

JANUARY

FEBRUARY

MARCH

JULY

AUGUST

SEPTEMBER

OCTOBER

NOVEMBER

DECEMBER

16
17
18
19
20
21
22
23
24
25
26
27
28
29
30

APRIL

MAY

JUNE

LUNDI—18 Mars, 1935

77-288

LUNES—18 de Marzo de 1935

MONDAY—March 18th, 1935

Sun rises 6.10; sets 6.8 Lighting up 6.38 High Water London Bridge 1.1 a.m.; 1.20 p.m.

Gifts for Leikn. All 12 1/2 b. w. w. Jullfass.

MARDI—19 Mars, 1935

78-287

MARTES—19 de Marzo de 1935

TUESDAY—March 19th, 1935

Sun rises 6.8; sets 6.10 Lighting up 6.40 High Water London Bridge 1.35 a.m.; 1.52 p.m.

JANUARY

FEBRUARY

MARCH

JULY

AUGUST

SEPTEMBER

OCTOBER

APRIL

NOVEMBER

MAY

DECEMBER

JUNE

18
19
20
21
22
23
24
25
26
27
28
29
30
31

MERCREDI—20 Mars, 1935 79-286 MIÉRCOLES—20 de Marzo de 1935

WEDNESDAY—March 20th, 1935

Sun rises 6.5; sets 6.11 Lighting up 6.41 High Water London Bridge 2.2 a.m.; 2.20 p.m.

JEUDI—21 Mars, 1935 80-285 JUEVES—21 de Marzo de 1935

THURSDAY—March 21st, 1935

Sun rises 6.3; sets 6.13 Lighting up 6.43 High Water London Bridge 2.29 a.m.; 2.48 p.m.

Kann til 10 Kl. 10 ofren.

JANUARY

FEBRUARY

MARCH

JULY

AUGUST

SEPTEMBER

APRIL

OCTOBER

MAY

NOVEMBER

JUNE

DECEMBER

20
21
22
23
24
25
26
27
28
29
30
31

FRIDAY—March 22nd, 1935

Sun rises 6.1; sets 6.15 Lighting up 6.45 High Water London Bridge 2.57 a.m.; 3.18 p.m.

Kæm til Þröta vaf. Gullfoss H. H. Farn.
frá Leikku.
Hollgr. Ben Gíslí f. vj. dafi. Thomsen
(K.S.)

JANUARY

FEBRUARY

MARCH

SATURDAY—March 23rd, 1935

Sun rises 5.58; sets 6.16 Lighting up 6.46 High Water London Bridge 3.27 a.m.; 3.46 p.m.

[Faint handwritten notes in Icelandic]

JULY

AUGUST

SEPTEMBER

APRIL

OCTOBER

MAY

NOVEMBER

JUNE

DECEMBER

22
23
24
25
26
27
28
29
30
31

DIMANCHE—24 Mars, 1935 83-282 DOMINGO—24 de Marzo de 1935

SUNDAY—March 24th, 1935

Sun rises 5.56; sets 6.18 Lighting up 6.48 High Water London Bridge 3.56 a.m.; 4.13 p.m.

LUNDI—25 Mars, 1935 84-281 LUNES—25 de Marzo de 1935

MONDAY—March 25th, 1935

LADY DAY (Quarter Day)

Sun rises 5.54; sets 6.20 Lighting up 6.30 High Water London Bridge 4.24 a.m.; 4.39 p.m.

*Einvar Sch. Th. hvef þage þar þar
25/1 Sk. (dsk.) Dillu 16. 6 doll
25/1 " " Faarhúid "*

*og gæri det heðsk derudh. -
D. solgt sidst i forge e m. K. 50. -
Kau valge Dillu i Faro e isl. K. 70. af.*

JANUARY

FEBRUARY

MARCH

JULY

AUGUST

SEPTEMBER

APRIL

OCTOBER

MAY

NOVEMBER

JUNE

DECEMBER

24
25
26
27
28
29
30
31

LUNDI—8 Avril, 1935

98-267

LUNES—8 de Abril de 1935

MONDAY—April 8th, 1935

Sun rises 5.23; sets 6.43 Lighting up 7.13 High Water London Bridge 4.46 a.m.; 5.5 p.m.

JANUARY

FEBRUARY

MARCH

APRIL

MARDI—9 Avril, 1935

99-266

MARTES—9 de Abril de 1935

TUESDAY—April 9th, 1935

Sun rises 5.20; sets 6.45 Lighting up 7.15 High Water London Bridge 5.26 a.m.; 5.41 p.m.

JULY

AUGUST

SEPTEMBER

OCTOBER

NOVEMBER

MAY

DECEMBER

JUNE

Huginn Bitnarsen K. 465. F.H. hands.

8

9

10

11

12

13

14

15

16

17

18

19

20

21

22

23

24

25

26

27

28

29

30

MERCREDI—10 Avril, 1935

100-265

MIÉRCOLES—10 de Abril de 1935

WEDNESDAY—April 10th, 1935

Sun rises 5.18; sets 6.46 Lighting up 7.16 High Water London Bridge 6.8 a.m.; 6.24 p.m.

Signed. Solgt. Bilen N. 2500.-

JEUDI—11 Avril, 1935

101-264

JUEVES—11 de Abril de 1935

THURSDAY—April 11th, 1935

Sun rises 5.16; sets 6.48 Lighting up 7.18 High Water London Bridge 7.7 a.m.; 7.20 p.m.

JANUARY

FEBRUARY

MARCH

APRIL

JULY

AUGUST

SEPTEMBER

OCTOBER

NOVEMBER

MAY

DECEMBER

- 10
- 11
- 12
- 13
- 14
- 15
- 16
- 17
- 18
- 19
- 20
- 21
- 22
- 23
- 24
- 25
- 26
- 27
- 28
- 29
- 30

JEUDI—18 Avril, 1935

108-257

JUEVES—18 de Abril de 1935

THURSDAY—April 18th, 1935

Sun rises 6.0; sets 8.0

Lighting up 9.0

High Water London Bridge 2.27 a.m.; 2.45 p.m.

VENDREDI—19 Avril, 1935

109-256

VIERNES—19 de Abril de 1935

FRIDAY—April 19th, 1935

GOOD FRIDAY (Scottish Bank Holiday)

Sun rises 5.58; sets 8.2

Lighting up 9.2

High Water London Bridge 2.57 a.m.; 3.16 p.m.

"Herring B" kann kl. 2 Morgun.

JANUARY

FEBRUARY

MARCH

APRIL

JULY

AUGUST

SEPTEMBER

OCTOBER

MAY

NOVEMBER

JUNE

DECEMBER

18
19
20
21
22
23
24
25
26
27
28
29
30

MERCREDI—8 Mai, 1935

128-237

MIÉRCOLES—8 de Mayo de 1935

WEDNESDAY—May 8th, 1935

Sun rises 5.21; sets 8.32 Lighting up 9.32 High Water London Bridge 6.10 a.m.; 6.19 p.m.

JEUDI—9 Mai, 1935

129-236

JUEVES—9 de Mayo de 1935

THURSDAY—May 9th, 1935

Sun rises 5.20; sets 8.34 Lighting up 9.34 High Water London Bridge 6.55 a.m.; 6.59 p.m.

*Kapn. Björnsson Ferk. Hansen
Landsb. Nr 550. -*

JANUARY

FEBRUARY

MARCH

APRIL

MAY

JULY

AUGUST

SEPTEMBER

OCTOBER

NOVEMBER

JUNE

DECEMBER

8

9

10

11

12

13

14

15

16

17

18

19

20

21

22

23

24

25

26

27

28

29

30

LUNDI—10 Juin, 1935

161-204

LUNES—10 de Junio de 1935

MONDAY—June 10th, 1935

WHIT MONDAY

Sun rises 4.44; sets 9.15

Lighting up 10.15

High Water London Bridge 9.4 a.m.; 9.8 p.m.

10/7. S. Hjalluoket (N.6.). N. 3500. - (V.D.)

MARDI—11 Juin, 1935

162-208

MARTES—11 de Junio de 1935

TUESDAY—June 11th, 1935

Sun rises 4.43; sets 9.15

Lighting up 10.15

High Water London Bridge 10.2 a.m.; 10.12 p.m.

JANUARY

FEBRUARY

MARCH

APRIL

MAY

JUNE

JULY

AUGUST

SEPTEMBER

OCTOBER

NOVEMBER

DECEMBER

10
11
12
13
14
15
16
17
18
19
20
21
22
23
24
25
26
27
28
29
30

MERCREDI—10 Juillet, 1935

191—174

MIÉRCOLES—10 de Julio de 1935

WEDNESDAY—July 10th, 1935

Sun rises 4.54; sets 9.16 Lighting up 10.16 High Water London Bridge 8.54 a.m.; 9.5 p.m.

P. Hjalbergh kr. 3500. - (V.G.) Vps.

JEUDI—11 Juillet, 1935

192—173

JUEVES—11 de Julio de 1935

THURSDAY—July 11th, 1935

Sun rises 4.55; sets 9.15 Lighting up 10.15 High Water London Bridge 9.52 a.m.; 10.15 p.m.

JANUARY

JULY

FEBRUARY

MARCH

APRIL

MAY

JUNE

AUGUST

SEPTEMBER

OCTOBER

NOVEMBER

DECEMBER

- 10
- 11
- 12
- 13
- 14
- 15
- 16
- 17
- 18
- 19
- 20
- 21
- 22
- 23
- 24
- 25
- 26
- 27
- 28
- 29
- 30

VENDREDI—2 Août, 1935

214-151

VIERNES—2 de Agosto de 1935

FRIDAY—August 2nd, 1935

Sun rises 5.23; sets 8.48

Lighting up 9.48

High Water London Bridge 4.40 a.m.; 4.45 p.m.

*Jon O. Walhøe i Kockhølen lide idag,
efter Prætoried af Sparvogn.*

SAMEDI—3 Août, 1935

215-150

SÁBADO—3 de Agosto de 1935

SATURDAY—August 3rd, 1935

Sun rises 5.25; sets 8.46

Lighting up 9.46

High Water London Bridge 5.13 a.m.; 5.15 p.m.

JANUARY

JULY

FEBRUARY

AUGUST

MARCH

APRIL

MAY

JUNE

2

3

4

5

6

7

8

9

10

11

12

13

14

15

16

17

18

19

20

21

22

23

24

25

26

27

28

29

30

31

SEPTEMBER

OCTOBER

NOVEMBER

DECEMBER

VENDREDI—16 Août, 1935

228-137

VIERNES—16 de Agosto de 1935

FRIDAY—August 16th, 1935

Sun rises 5.46; sets 8.22

Lighting up 9.22

High Water London Bridge 3.54 a.m.; 4.2 p.m.

*Skípanavgl. Lighrey. Handa samningur
hagl fyrir Skípa fundi í dag.*

SAMEDI—17 Août, 1935

229-136

SÁBADO—17 de Agosto de 1935

SATURDAY—August 17th, 1935

Sun rises 5.47; sets 8.21

Lighting up 9.21

High Water London Bridge 4.37 a.m.; 4.46 p.m.

JANUARY

JULY

FEBRUARY

AUGUST

MARCH

APRIL

MAY

JUNE

SEPTEMBER

OCTOBER

NOVEMBER

DECEMBER

16
17
18
19
20
21
22
23
24
25
26
27
28
29
30
31

JEUDI—26 Septembre, 1935

269-96

JUEVES—26 de Setiembre de 1935

THURSDAY—September 26th, 1935

Sun rises 6.50; sets 6.52

Lighting up 7.52

High Water London Bridge 2.4 a.m.; 2.19 p.m.

*Hús Skipavergyl. Gighu þar var sölges.
Lukki au vðry.*

VENDREDI—27 Septembre, 1935

270-95

VIERNES—27 de Setiembre de 1935

FRIDAY—September 27th, 1935

6.52; sets 6.49

Lighting up 7.49

High Water London Bridge 2.37 a.m.; 2.47 p.m.

JANUARY

JULY

FEBRUARY

AUGUST

MARCH

SEPTEMBER

APRIL

MAY

JUNE

GENERAL INFORMATION

OCTOBER

NOVEMBER

DECEMBER

26
27
28
29
30

JANUARY
FEBRUARY
MARCH
APRIL
MAY
JUNE
JULY
AUGUST
SEPTEMBER
OCTOBER
NOVEMBER

MERCREDI—6 Novembre, 1935 310-55 MIÉRCOLES—6 de Noviembre de 1935

WEDNESDAY—November 6th, 1935

Sun rises 7.0; sets 4.26 Lighting up 4.56 High Water London Bridge 8.57 a.m.; 10.4 p.m.

*John Clafson, Kuchwshlid.
M. Halstern Hagruissan No. 1400. - (H. C.O.)*

JEUDI—7 Novembre, 1935 311-54 JUEVES—7 de Noviembre de 1935

THURSDAY—November 7th, 1935

Sun rises 7.2; sets 4.25 Lighting up 4.55 High Water London Bridge 10.19 a.m.; 11.10 p.m.

6
7
8
9
10
11
12
13
14
15
16
17
18
19
20
21
22
23
24
25
26
27
28
29
30

GENERAL INFORMATION

DECEMBER

VENDREDI—8 Novembre, 1935 312-53 VIERNES—8 de Noviembre de 1935

FRIDAY—November 8th, 1935

Sun rises 7.4; sets 4.23 Lighting up 4.53 High Water London Bridge 11.24 a.m.; — p.m.

John Chapman
7.4.1935

SAMEDI—9 Novembre, 1935 313-52 SABADO—9 de Noviembre de 1935

SATURDAY—November 9th, 1935

Sun rises 7.5; sets 4.22 Lighting up 4.52 High Water London Bridge 12.5 a.m.; 12.16 p.m.

Magnum Peterson Ki. 625. - (N.O. + Ford Hansen)

JANUARY

JULY

FEBRUARY

AUGUST

MARCH

SEPTEMBER

APRIL

OCTOBER

MAY

NOVEMBER

JUNE

8
9
10
11
12
13
14
15
16
17
18
19
20
21
22
23
24
25
26
27
28
29
30

GENERAL INFORMATION

DECEMBER

LUNDI—30 Decembre, 1935 364-1 LUNES—30 de Diciembre de 1935

MONDAY—December 30th, 1935

Sun rises 8.6; sets 3.59 Lighting up 4.29 High Water London Bridge 4.28 a.m.; 5.9 p.m.

MARDI—31 Decembre, 1935

365-0

MARTES—31 de Diciembre de 1935

TUESDAY—December 31st, 1935

Sun rises 8.6; sets 4.0 Lighting up 4.30 High Water London Bridge 5.13 a.m.; 5.57 p.m.

JANUARY

JULY

FEBRUARY

AUGUST

MARCH

SEPTEMBER

APRIL

OCTOBER

MAY

NOVEMBER

JUNE

DECEMBER

CALENDAR 1936

JANUARY	FEBRUARY	MARCH	APRIL
MAY	JUNE	JULY	AUGUST
SEPTEMBER	OCTOBER	NOVEMBER	DECEMBER

GENERAL INFORMATION

14/3 '36. Olafur Larusson K. 2700.- l.o.

JANUARY

JULY

FEBRUARY

AUGUST

MARCH

SEPTEMBER

APRIL

OCTOBER

MAY

NOVEMBER

JUNE

DECEMBER

TUESDAY - December 1st 1935
MARTES - 31 de Diciembre de 1935

CALENDAR 1935

	JANUARY	FEBRUARY	MARCH	APRIL
S	6 13 20 27	3 10 17 24	3 10 17 24 31	7 14 21 28
M	7 14 21 28	4 11 18 25	4 11 18 25	1 8 15 22 29
T	1 8 15 22 29	5 12 19 26	5 12 19 26	2 9 16 23 30
W	2 9 16 23 30	6 13 20 27	6 13 20 27	3 10 17 24
T	3 10 17 24 31	7 14 21 28	7 14 21 28	4 11 18 25
F	4 11 18 25	1 8 15 22	1 8 15 22 29	5 12 19 26
S	5 12 19 26	2 9 16 23	2 9 16 23 30	6 13 20 27

	MAY	JUNE	JULY	AUGUST
S	5 12 19 26	2 9 16 23 30	7 14 21 28	4 11 18 25
M	6 13 20 27	3 10 17 24	1 8 15 22 29	5 12 19 26
T	7 14 21 28	4 11 18 25	2 9 16 23 30	6 13 20 27
W	1 8 15 22 29	5 12 19 26	3 10 17 24 31	7 14 21 28
T	2 9 16 23 30	6 13 20 27	4 11 18 25	1 8 15 22 29
F	3 10 17 24 31	7 14 21 28	5 12 19 26	2 9 16 23 30
S	4 11 18 25	1 8 15 22 29	6 13 20 27	3 10 17 24 31

	SEPTEMBER	OCTOBER	NOVEMBER	DECEMBER
S	1 8 15 22 29	6 13 20 27	3 10 17 24	1 8 15 22 29
M	2 9 16 23 30	7 14 21 28	4 11 18 25	2 9 16 23 30
T	3 10 17 24	1 8 15 22 29	5 12 19 26	3 10 17 24 31
W	4 11 18 25	2 9 16 23 30	6 13 20 27	4 11 18 25
T	5 12 19 26	3 10 17 24 31	7 14 21 28	5 12 19 26
F	6 13 20 27	4 11 18 25	1 8 15 22 29	6 13 20 27
S	7 14 21 28	5 12 19 26	2 9 16 23 30	7 14 21 28

Apr. 22—Easter Monday.
May 6—Scottish Bank Holiday.

Dec. 25—Christmas Day.
Dec. 26—Boxing Day.

CALENDAR 1936

	JANUARY	FEBRUARY	MARCH	APRIL
S	5 12 19 26	2 9 16 23	1 8 15 22 29	5 12 19 26
M	6 13 20 27	3 10 17 24	2 9 16 23 30	6 13 20 27
T	7 14 21 28	4 11 18 25	3 10 17 24 31	7 14 21 28
W	1 8 15 22 29	5 12 19 26	4 11 18 25	1 8 15 22 29
T	2 9 16 23 30	6 13 20 27	5 12 19 26	2 9 16 23 30
F	3 10 17 24 31	7 14 21 28	6 13 20 27	3 10 17 24
S	4 11 18 25	1 8 15 22 29	7 14 21 28	4 11 18 25

	MAY	JUNE	JULY	AUGUST
S	3 10 17 24 31	7 14 21 28	5 12 19 26	2 9 16 23 30
M	4 11 18 25	1 8 15 22 29	6 13 20 27	3 10 17 24 31
T	5 12 19 26	2 9 16 23 30	7 14 21 28	4 11 18 25
W	6 13 20 27	3 10 17 24	1 8 15 22 29	5 12 19 26
T	7 14 21 28	4 11 18 25	2 9 16 23 30	6 13 20 27
F	1 8 15 22 29	5 12 19 26	3 10 17 24 31	7 14 21 28
S	2 9 16 23 30	6 13 20 27	4 11 18 25	1 8 15 22 29

	SEPTEMBER	OCTOBER	NOVEMBER	DECEMBER
S	6 13 20 27	4 11 18 25	1 8 15 22 29	6 13 20 27
M	7 14 21 28	5 12 19 26	2 9 16 23 30	7 14 21 28
T	1 8 15 22 29	6 13 20 27	3 10 17 24	1 8 15 22 29
W	2 9 16 23 30	7 14 21 28	4 11 18 25	2 9 16 23 30
T	3 10 17 24	1 8 15 22 29	5 12 19 26	3 10 17 24 31
F	4 11 18 25	2 9 16 23 30	6 13 20 27	4 11 18 25
S	5 12 19 26	3 10 17 24 31	7 14 21 28	5 12 19 26

Jan. 1—New Year's Day.
Apr. 19—Good Friday.

June 10—Whit Monday.
Aug. 5—Bank Holiday.

INDEX

Calendar for 1935 & 1936	Page	Foreign Money (at Par)	Page
Calendar Information for 1935	1	Sizes of Paper	11
Postal Information	2	Table of Discounts	12
Foreign Mails	3	Table of Interest (by days)	13
Air Mails	4	Table of Intervals (in days)	13
British System of Weights and Measures with Metric Equivalents	5	How to Correct Printers' Proofs	13
Metric System of Weights and Measures with British Equivalents	8	Table of Ad Valorem Stamp Duties	14
Foreign Time Table	9	Public and Government Offices	15
Conversion Table	10	Offices of British Dominions, &c.	15
		Embassies & Legations	16

GENERAL INFORMATION
PAT. No. 13372/12

FESTIVALS, BANK AND PUBLIC HOLIDAYS FOR 1935

Epiphany	...	January 6	Queen Mary Birthday	...	May
Septua. Sunday	...	February 17	Ascension Day	...	"
St. David	...	March 1	King George V. Birthday	...	June
Quinqua. Sunday	...	" 3	Whit Sunday	...	"
Ash Wednesday	...	" 6	Whit Monday	...	"
1st Sunday in Lent	...	" 10	Trinity Sunday	...	"
St. Patrick	...	" 17	Corpus Christi	...	"
Annunciation	...	" 25	Prince of Wales Birthday	...	"
Palm Sunday	...	April 14	Midsummer Day	...	"
Good Friday	...	" 19	August Bank Holiday	...	August
Easter Sunday	...	" 21	St. Michael	...	September
Easter Monday	...	" 22	St. Andrew	...	November
St. George	...	" 23	1st Sunday in Advent	...	December
Low Sunday	...	" 28	Christmas Day	...	"
Rogation Sunday	...	May 26	Boxing Day	...	"

SCOTTISH BANK HOLIDAYS

January 1.	Good Friday, April 19.	Monday, May 6.	Monday, August
	Christmas Day, December 25.		

THE SEASONS

Spring Opens	...	March 21	Autumn Opens	...	September
Summer "	...	June 21	Winter "	...	December
The longest day is June 21.			The shortest day December 22		
Summer Time begins April 14.			Summer Time ends October 6.		

QUARTER DAYS

ENGLAND AND IRELAND					
Lady Day	...	March 25	Michaelmas	...	September
Midsummer	...	June 24	Christmas	...	December
SCOTLAND					
Candlemas	...	February 2	Lammas	...	August
Whitsun	...	May 15	Martinmas	...	November

ENGLISH LAW SITTINGS, 1935

Hilary Sittings begin	January 11; end April 17.
Easter "	April 30; end June 7.
Trinity "	June 18; end July 31.
Michaelmas "	October 13; end December 21.

LAW TERMS IN SCOTLAND

Summer Session, 7th May to 20th July	Winter Session, 15th October to 20th March
--------------------------------------	--

UNIVERSITY TERMS, 1935

OXFORD		CAMBRIDGE	
Hilary—Begins Jan. 10 (20), ends April 13 (Mar. 16)	Lent—Begins Jan. 5 (15), ends Mar. 25 (15)	Easter—Begins Apr. 16 (23), ends June 25 (14)	Michaelmas—Begins Oct. 1 (8), ends Dec. 19 (6)
Trinity—Begins Apl. 24 (28), ends July 6 (June 22)			Note: The figures in brackets denote the dates of Full Term.
Michaelmas—Begins Oct. 1 (13), ends Dec. 17 (7)			

POSTAL INFORMATION

STAMPS.

Postage Stamps of the following values are issued:—

1d.	2½d.	6d.	2s. 6d.
1d.	3d.	9d.	5s.
1½d.	4d.	10d.	10s.
2d.	5d.	1s.	

Books of Postage Stamps—Books are issued at 5s. containing thirty-four 1½d., and six each of 1d. and ½d. stamps, at 3s. containing eighteen 1½d., and six each of 1d. and ½d. stamps, and 2s. containing ten 1½d. and six each of 1d. and ½d. stamps.

In a rural district ½d., 1d. and 1½d. postage stamps and registered letter envelopes can be obtained from the postman.

LETTERS.

The prepaid rate of postage is as follows:—

Not exceeding 2 oz. in weight.....1½d.
For every additional 2 oz. or fraction of 2oz.....½d.

A letter if posted unpaid is charged on delivery with double postage; if posted underpaid, with double the amount short paid. No letter may exceed two feet in length, one foot in width, or one foot in depth, or if made up in the form of a roll, 30 inches in length and 4 inches in diameter. There is no limit of weight.

POST-CARDS.

The prepaid rate of postage on every post-card is one penny. A post-card posted unpaid is chargeable on delivery with double postage; if posted underpaid, with double the amount short paid. The prepaid rate of postage on every reply post-card is twopence.

The material for private cards to be used as post-cards must be ordinary cardboard not thinner than that used for the thinnest cards issued and sold by the Postmaster-General for use as post-cards. No card may exceed 5½ inches in length by 4½ inches in width, or be less than 4 inches in length by 2½ inches in width.

STAMPED ENVELOPES, CARDS, ETC.

Registered Letter Envelopes for Foreign as well as Inland Letters, bearing a 4½d. stamp embossed on the flap for the payment of registration fee 3d. and postage 1½d., of four sizes, are sold.

Post-cards, Envelopes embossed with 1½d. and 1d. stamps, Letter-cards, and Newspaper Wrappers are also issued by the Postmaster-General for sale to the public.

PRINTED PAPERS.

The prepaid rate is:—

Not exceeding 2 oz. in weight.....1d.
and then at the rate of a ½d. for every subsequent 2 oz. or fraction of 2 oz. up to 2 lb. The rate for 1 lb. will be 4d., and for 2 lb. 8d.

No Printed Paper may exceed 2 lb. in weight. The only limit of size applicable is that applicable to letters.

NEWSPAPERS.

The prepaid rate of postage on copies of publications registered for transmission at the Inland Newspaper Rate, including any Supplements thereto, is one penny for every copy not exceeding 6 oz. in weight, with a further charge of one halfpenny for every additional 6 oz. or fraction of 6 oz.

PARCELS.

Rates and Weight.

The rates of postage on parcels are as follows:—

Not exceeding 2 lb. in weight.....	6d.
Exceeding 2 lb. but not exceeding 5 lb.....	9d.
" 5 " " " " 8 " " " " 1s.	
" 8 " " " " 11 " " " " 1s. 3d.	
No parcel may exceed 11 lb. in weight.	

Size.

The size allowed for an Inland Parcel is:—
Greatest length.....3ft. 6ins.
Greatest length and girth combined.....6ft. 0in.

RE-DIRECTION.

Any kind of postal packet may be re-directed to the same addressee at another address, either by any Officer of the Post Office, or by any agent of the addressee after delivery, under the following rules:—

Letters, Post-cards, Printed Papers and Newspapers are re-transmitted by post without additional charge.

Parcels are, when re-directed, liable to additional postage at the prepaid rate for each re-direction.

POSTE RESTANTE.

Postal packets of any kind to be called for are, as a rule, taken in at all Post Offices except Town Sub-Offices. The words "to be called for" or "Poste Restante" should appear in the address.

The Poste Restante is intended solely for the accommodation of strangers and travellers, and even they may not use the Poste Restante for more than three months.

REGISTRATION AND COMPENSATION.

Any letter, parcel, or other postal packet may be registered. The minimum fee for registration is 3d.

Instructions for Registering.

Anything intended for registration must be handed to an Officer of the Post Office, and a certificate of posting, bearing an acknowledgment that the fee for registration and compensation has been paid, must be obtained. Nothing intended for registration should be dropped into a letter box.

The fees payable over and above the postage, and the respective limits of compensation, are as follows:—

Fee.*	Limit of Compensation.	Fee.*	Limit of Compensation.
3d.	£5	1s. 1d.	£200
4d.	20	1s. 2d.	220
5d.	40	1s. 3d.	240
6d.	60	1s. 4d.	260
7d.	80	1s. 5d.	280
8d.	100	1s. 6d.	300
9d.	120	1s. 7d.	320
10d.	140	1s. 8d.	340
11d.	160	1s. 9d.	360
1s. 0d.	180	1s. 10d.	380
		1s. 11d.	400

These fees relate to Inland Post only.

*These fees include the ordinary registration fee of 3d. The highest amount of compensation obtainable for any one packet is £400.

UNREGISTERED PARCELS.

The maximum limit of compensation is £2.

No compensation is paid in respect of money of any kind sent by parcel post, whether registered or unregistered, or in respect of jewellery (gold, silver, jewels, etc.) sent by Parcel Post unregistered.

In order to secure compensation in respect of the loss of a parcel in the post a certificate of posting should be obtained by the sender when the parcel is posted.

TELEGRAMS.

Twelve words, 1/- and 1d. per word afterwards. Names and addresses are charged for. Five figures count as one word. Free delivery within three miles of terminal office.

FOREIGN POST.

To British possessions and U.S.A., 1½d. for 1st oz. and 1d. each succeeding oz. To foreign countries 2½d. for 1st oz., then 1½d. per oz. Newspapers, &c., ½d. per 2 ozs. to all places, except Canada 1d. per 6 ozs.

For Parcel Post abroad—see page 4.

MONEY ORDERS.

Not more	...	£3	...	4d.
"	...	£10	...	6d.
"	...	£20	...	8d.
"	...	£30	...	10d.
"	...	£40	...	1/-

POSTAL ORDERS.

Forty-one are issued, from 6d. to 21/- 6d. to 2/6, 1d.; 3/- to 15/-, 1½d.; 15/6 to 21/-, 2d.

Stamps, up to two in number and 5d. in value, may be affixed to any order. Orders must be cashed within three months of issue.

JANUARY JULY
 FEBRUARY AUGUST
 MARCH SEPTEMBER
 APRIL OCTOBER
 MAY NOVEMBER
 JUNE DECEMBER

GENERAL INFORMATION

FOREIGN MAILS
 LETTERS

	Day of Sailing	Days in Transit	Parcel Rates		Telegram Rates	
			2 lbs. s. d.	11 lbs. s. d.	s. d.	s. d.
Abyssinia ...	Thurs. ...	14	3 0	5 9	1 8	2 0
Aden ...	Thurs. ...	10	2 0	5 3	2 0	2 7
Afghanistan ...	Daily ...	19-20	3 0	4 6	2 1	2 1
Albania ...	Daily ...	3	1 9	3 3	2 1	2 1
Algeria ...	3 per week ...	23-4	2 9	5 6	1 8	2 0
Arabia ...	Frequently ...	15-21	3 0	5 6	1 8	2 0
Argentina ...	Thurs. ...	30	1 lb. 1s. 4d., 6d. per extra 1 lb.			
Australia ...	Daily ...	2	2 6	3 9		
Austria ...	Daily ...	8-12	3 6	4 9		
Azores ...	Frequently ...	10-15	1 6	4 3		
Barbados ...	Daily ...	12 hrs.	1 9	3 0		
Belgium ...	2 per week ...	8-17	2 0	5 0		
Bermuda ...	Tues., Fri. ...	21-27	3 9	7 0		
Bolivia ...	Thurs. ...	26	1 9	4 6		
Borneo ...	Frequently ...	12-18	3 3	5 3		
Brazil ...	2 per week ...	15-21	3 0	5 6		
Buenos Aires ...	Daily ...	3	2 0	3 6		
Bulgaria ...	Tues., Fri. ...	7-12	2 3	6 0		
Burma ...	Frequently ...	5-8	2 9	4 0		
Canada ...	Fri. ...	17	3 0	4 0		
Canary Islands ...	2 per month ...	9-15	3 0	4 0		
Cape Town ...	Thurs. ...	16-18	2 0	5 3		
Cape Verde Is. ...	2 per week ...	20-25	3 3	5 6		
Ceylon ...	3 per week ...	32	2 9	4 9		
China—	Tues., Fri. ...	28-32	5 0	11 9		
via Suez ...	Daily ...	23-24	3 3	9 9		
via U.S.A. ...	2 per week ...	23-30	1 6	3 0		
via Siberia ...	Daily ...	2	1 6	3 0		
Colombia ...	2 per week ...	7	2 6	5 0		
Copenhagen ...	Thurs. ...	10-16	2 6	5 0		
Crete ...	Daily ...	6-7	2 6	5 0		
Cuba ...	Daily ...	13-2	1 6	3 0		
Cyprus ...	Daily ...	13-2	1 6	3 0		
Czecho Slovakia ...	Frequently ...	15-27	2 0	5 0		
Denmark ...	2 per week ...	20-27	3 0	5 3		
Dominica ...	3 per week ...	5-8	2 0	4 6		
Ecuador ...	1 per week ...	28-40	1 9	4 6		
Egypt ...	Irregular ...	10	1 6	3 0		
Falkland Islands ...	1 per month ...	27-37	3 6	9 3		
Faroe Islands ...	Daily ...	7-12 hrs.	1 6	2 9		
Fiji ...	Daily ...	1	1 6	3 0		
France ...	Daily ...	3-4	1 6	3 9		
Germany ...	Daily ...	4	1 6	3 9		
Gibraltar ...	Frequently ...	16-21	1 9	4 3		
Greece ...	Tues., Fri. ...	17-19	3 0	10 0		
Guiana ...	Tues., Fri. ...	14-20	2 6	5 6		
Hawaii ...	Daily ...	12 hrs.	1 9	3 0		
Hayti ...	2 per week ...	18	2 0	4 0		
Holland ...	2 per week ...	20	2 0	4 0		
Honduras (Brit.) ...	Tues., Fri. ...	32-34	1 9	3 9		
Honduras (Republic) ...	Fri. ...	28-29				
Hong Kong—	Daily ...	21-25				
via U.S.A. ...	Daily ...	2	2 6	4 3		
via Suez ...	Thurs. ...	14-16	2 0	5 3		
via Siberia ...	Thurs. ...	7-8	3 3	6 0		
Hungary ...	Daily ...	13	2 3	3 9		
India ...	2 per week ...	12-17	1 6	4 0		
Iraq ...	Fri. ...	28-31	2 0	3 9		
Italy ...	Tues., Fri. ...	24-31	3 9	9 3		
Jamaica—	Daily ...	20-25				
via U.S.A. ...	Daily ...	23	2 6	4 0		
via Suez ...	Thurs. ...	17-28	2 9	6 3		
via Siberia ...	Thurs. ...	26	2 0	4 6		
Japan—	Irregular ...	18	3 3	4 9		
via U.S.A. ...	2 per month ...	32-34	2 6	4 6		
via Suez ...	Fri. ...	4-6	2 0	4 0		
via Siberia ...	Daily ...	33-5	1 6	3 3		
Jugo-Slavia ...	Irregular ...	27-52	2 0	5 0		
Kenya ...	Irregular ...	—	2 3	5 0		
Labuan ...	2 per week ...	9-15	3 6	9 6		
Liberia ...	Daily ...	7-9	2 6	4 0		
Madagascar ...	Daily ...	33	1 6	3 9		
Madagascar ...	Daily ...	33	2 6	4 3		
Madeira ...	Fri. ...	19-20	2 6	4 3		
Malta ...	Fri. ...	6-17	2 6	5 9		
Mauritius ...	Tues., Fri. ...	6-17	2 6	5 9		
Mexico, sea direct ...						
Mexico, via U.S.A. ...						
Montenegro ...						
Morocco—						
Tangier ...						
French Zone ...						
Natal ...						
Newfoundland ...						

FOREIGN MAILS (contd.)

	Day of Sailing	Days in Transit	Parcel Rates		Telegram Rates per word
			2 lbs. s. d.	11 lbs. s. d.	
New South Wales ...	Thurs. ...	31	1 lb. 1s. 4d., 6d. per extra 1 lb.		2 0
New Zealand—					
via San Francisco ...	2 per month ...	30-33			1 8
via Panama ...	Irregular ...	33-40	2 3	6 3	
via Suez ...	Irregular ...	39-40			
Norway ...	Daily ...	2-3	2 0	4 0	2 3
Palestine ...	4 per week ...	6-7	2 3	4 6	10 — 1 1
Panama ...	Tues., Fri. ...	13-19	2 9	5 0	2 2 — 2 10
Persia ...	Thurs. ...	8-12	2 3	5 3	1 7 — 2 1
Peru ...	Tues., Fri. ...	16-31	3 9	6 3	2 6
Poland ...	Daily ...	2	1 6	3 3	3 3
Portugal ...	Daily ...	23	2 0	3 3	3 3
Roumania ...	Daily ...	3	2 3	4 0	4 4
Russia in Europe ...	Daily ...	3-33	3 3	4 6	5 3
Russia in Asia ...	—	—	4 6	6 3	5 3
Salvador ...	Tues., Fri. ...	15-20	3 0	5 3	2 8
Serbia ...	Daily ...	23	2 6	4 0	4 4
Siam ...	Thurs. ...	23	3 3	5 3	1 11
Sierra Leone ...	2 per month ...	10-14	2 6	4 9	2 6
Singapore ...	Thurs. ...	22-23	2 0	4 6	2 10
South Africa ...	Fri. ...	17-21	9d. per lb.		1 3
Spain ...	Daily ...	13	2 9	4 3	3 3
Sweden ...	Daily ...	2	2 0	4 3	2 3
Switzerland ...	Daily ...	20 hrs.	2 0	3 3	3 3
Syria ...	4 per week ...	6-7	2 9	5 0	1 1 — 1 4
Tasmania ...	Thurs. ...	33			1 8 — 2 0
Transvaal ...	Fri. ...	18-19	9d. per lb.		1 3
Trinidad ...	Frequently ...	12-18	1 9	4 9	2 2
Tunis ...	Daily ...	5	2 9	4 3	3 3
Turkey ...	Daily ...	4	2 0	3 6	6 3
U.S.A. ...	Tues., Fri. ...	6-10	2 0	5 9	10 — 2 5
Uruguay ...	Tues., Fri. ...	15-23	3 0	5 6	2 7
Venezuela ...	Tues., Fri. ...	17-20	4 0	6 6	2 6
Zanzibar ...	Thurs. ...	17-27	2 3	5 6	1 8 — 2 1

AIR MAILS

	Postage		Last Collection at G.P.O. (Daily except where shown otherwise)	Transit
	s. d.	s. d.		
AFRICA	½ oz.	Add. ½ oz.		
NORTH				
Algeria ...	6 3	4 3	8.0 a.m. weekdays	1 ½ days to Algiers
Morocco ...			10.45 a.m. "	1 ½ " " Tangier and Casablanca
Tunis ...			8.0 a.m. "	1 ½ " " Tunis
WEST				
French Guinea ...	11	9	10.45 a.m. Sats.	2-3 days to Dakar
Senegal ...				
Gambia ...				
Sierra Leone ...	10	9		
EAST				
Kenya ...				9-23 days gain, 5 days to Nairobi, 6 to Mombasa
Uganda ...	7	6		13-24 " " 5 " " Entebbe
Tanganyika ...				9-24 " " 6 " " Dodoma and Dar-es-Salaam
Zanzibar ...			10.45 a.m. Weds.	9 " " 6 " " Zanzibar
Nyasaland ...	9	8		8-9 " " 13 " " Blantyre
Portuguese E. Africa ...	10	10		12 " " Beira
CENTRAL				
N.E. Belgian Congo ...	8	6	10.45 a.m. Weds.	10 days to Aba (" via Sudan ")
Belgian Congo, Katanga ...	1 3	1 3		8 " " Elizabethville (" via Rhodesia ")
RHODESIA				
... ..	9	8	10.45 a.m. Weds.	7-8 days (11-12 days gain)
SOUTH				
... ..	10	10	10.45 a.m. Weds.	8-10 days (8 to 10 days gain)
ARGENTINE				
... ..	4 0	4 0	10.45 a.m. Sats.	7 days to Buenos Aires (" via France ")

AIR MAILS (contd.)

	Postage		Last Collection at G.P.O. (Daily except where shown otherwise)	Transit
	s. d.	s. d.		
AUSTRALIA	½ oz. 4½	Add. ½ oz. 3½	8.0 p.m. Thurs.	"Internal"; 4 days gain to Melbourne and Brisbane
	6	5	10.45 a.m. Sats.	"via air to Karachi"; overtakes ordinary mail despatched previous Thurs.
	9	8	10.45 a.m. Sats.	"via air to Karachi and Internal"; delivered same time as Thurs. air
AUSTRIA	1 oz. 4	Add. oz. 3	7.0 a.m. 8.0 p.m.	Vienna 1st delivery next morning " next evening
BELGIUM	4	3	7.0 a.m. 11.0 a.m. 8.0 p.m.	Brussels and Antwerp same afternoon " same evening " 1st delivery next morning
BULGARIA	4	3	8.0 p.m.	Sofia second morning
BOLIVIA	½ oz. 4 0	Add. ½ oz. 4 0	10.45 a.m. Sats.	10-13 days to La Paz ("via France")
BORNEO	11	11	10.45 a.m. Sats.	13-16 days to Sarawak
BRAZIL	3 6	3 6	10.45 a.m. Sats.	7 days to Rio de Janeiro ("via France")
CANADA	2½	1½	as ordinary mails	1 day's gain
CEYLON	8	7	10.45 a.m. Sats.	9 days to Colombo ("by air in India")
CHILE	4 0	4 0	10.45 a.m. Sats.	11 " " "
CHINA	1 4 11	1 4 11	8.0 a.m. Weds. 10.45 a.m. Sats.	8 days to Santiago ("via France")
CZECHO SLOVAKIA	1 oz. 4	Add. oz. 3	7.0 a.m. 2.0 p.m. 8.0 p.m.	13-17 days to Hong-Kong "via France" 13-15 " " " ("via Singapore")
DANZIG	4	3	5.0 a.m. 2.0 p.m. 8.0 p.m.	Prague same evening " next morning " next afternoon
DENMARK	4	3	5.0 a.m. 11.0 a.m. 8.0 p.m.	Danzig same evening (express fee) " next morning " noon next day
DUTCH EAST INDIES	½ oz. 1 1	Add. ½ oz. 1 1	5.0 p.m. Weds.	Copenhagen same afternoon " 1st delivery next morning " next morning
EGYPT	3½	2½	10.45 a.m. Weds. and Sats.	8 days to Batavier
ESTONIA	1 oz. 4	Add. oz. 3	8.0 p.m.	2½ days to Alexandria and Cairo
FINLAND	4	3	8.0 p.m.	Tallinn next evening
FRANCE	4	3	6.0 a.m. 7.30 a.m. 8.0 a.m.	Helsingfors second morning
GERMANY	4	3	10.45 a.m.	Paris same day " afternoon " Lyons and Cannes same evening, also " Marseilles (express fee) " Paris same evening
GIBRALTAR	4	3	5.0 a.m. 7.0 a.m. 8.0 p.m.	Hamburg and Berlin same evening Cologne and Berlin same evening
GREECE	4	3	10.45 a.m.	Cologne, Hanover, Berlin next morning
HOLLAND	4	3	8.0 p.m.	Gibraltar second evening
			5.0 a.m. 7.0 a.m. 11.0 a.m. 5.0 p.m.	Athens third day Rotterdam and Amsterdam same day Rotterdam and Amsterdam same afternoon Amsterdam same evening Amsterdam 1st delivery next morning

GENERAL INFORMATION

- JANUARY
- FEBRUARY
- MARCH
- APRIL
- MAY
- JUNE
- JULY
- AUGUST
- SEPTEMBER
- OCTOBER
- NOVEMBER
- DECEMBER

AIR MAILS (contd.)

	Postage		Last Collection at G.P.O. (Daily except where shown otherwise)	Transit
	s. d.	s. d.		
HUNGARY	1 oz. 4	Add. oz. 3	7.0 a.m. 8.0 p.m.	Budapest 1st delivery next morning Budapest next afternoon
INDIA	½ oz. 8	Add. ½ oz. 7	10.45 a.m. Sats.	6 days to Bombay, Calcutta, Delhi, 7 days to Madras and Rangoon ("By air in India")
IRAQ	3½	2½	10.45 a.m. Sats.	8 days to Bombay, Calcutta, 7 days to Delhi, 9 days to Madras ("By air to Karachi")
ITALY	1 oz. 4	Add. oz. 3	6.0 a.m. 8.0 a.m. 11.0 a.m. 8.0 p.m.	3 days to Baghdad and 4 days to Basra
LATVIA	4	3	5.0 a.m. 8.0 p.m.	Milan same evening (express fee) Genoa and Milan next morning. Milan next morning Milan and Rome next evening
LITHUANIA	4	3	5.0 a.m. 8.0 p.m.	Riga next morning " next afternoon (express fee)
MALTA	4	3	8.0 a.m. Mon., Wed., Fri.	Kaunas 1st delivery next morning " next afternoon
NORWAY	4	3	7.0 a.m. 11.0 a.m. 8.0 p.m. Sat.	Malta next day
PALESTINE	½ oz. 3½	Add. ½ oz. 2½	10.45 a.m. Weds. 10.45 a.m. Sats.	Oslo 1st delivery next morning " next morning " Monday morning
PERSIA	7½	5½	10.45 a.m. Sats.	4 days to Gaza, Haifa and Jerusalem 3 " " " "
POLAND	1 oz. 4	Add. oz. 3	7.0 a.m. 2.0 p.m. 8.0 p.m.	8 to 9 days to Bushire
ROUMANIA	4	3	8.0 p.m.	Warsaw next morning " next afternoon
SPAIN	4	3	8.0 a.m. 10.45 a.m.	Bucharest second morning
SIAM	½ oz. 11	Add. ½ oz. 11	10.45 a.m. Sats.	Barcelona 1st delivery next morning " next morning
STRAITS SETTLEMENTS and MALAY STRAITS	11	11	10.45 a.m. Sats.	8 days to Bangkok
SUDAN	5	4	10.45 a.m. Weds.	8 days to Singapore
SWEDEN	1 oz. 4	Add. oz. 3	5.0 a.m. 11.0 a.m. 8.0 p.m.	3 days to Khartoum
SWITZERLAND	4	3	6.0 a.m. 11.0 a.m. 8.0 p.m.	Malmö same evening Stockholm next morning " " "
SYRIA	½ oz. 3½	Add. ½ oz. 2½	10.45 a.m. Weds. 10.45 a.m. Sats.	Bale and Zurich same evening Most parts 1st delivery next morning Bale, Berne, Geneva, Zurich next day
TURKEY	1 oz. 4	Add. oz. 3	8.0 p.m.	4½ days to Beirut
UNITED STATES OF AMERICA	½ oz. 5½	Add. ½ oz. 4½	As ordinary Mails	Istanbul third day
URUGUAY	4 0	4 0	10.45 a.m. Sats.	7½-11 days to San Francisco
YUGOSLAVIA	1 oz. 4	Add. oz. 3	7.0 a.m. 8.0 p.m.	7 days to Montevideo ("via France")
VENEZUELA	½ oz. 1 9	Add. ½ oz. 1 9	As ordinary U.S.A. Mails	Belgrade next afternoon Belgrade next evening
WEST INDIES and CENTRAL AMERICA	1 3	1 3	As ordinary U.S.A. Mails	11 to 15 Maracaibo and Caracas
Bahamas	5½	4½		5-7 days gain
Cuba	6½	4½		9-13 days to Nassau
Jamaica	9	8		8-12 " Havana 11-15 " Kingston

JANUARY
JULY

FEBRUARY
AUGUST

MARCH
SEPTEMBER

APRIL
OCTOBER

MAY
NOVEMBER

JUNE
DECEMBER

GENERAL
INFORMATION

BRITISH SYSTEM OF WEIGHTS AND MEASURES WITH METRIC EQUIVALENT

(See Page 10 for useful conversion table)

AVOIRDUPOIS WEIGHT.

1 GRAIN	= 0.0648	grammes
1 DRAM (dr.)	= 1.772	"
16 dr.	= 1 OUNCE (oz.)	= 28.35 "
16 oz.	= 1 POUND (lb.)	= 453.592 "
14 lb.	= 1 STONE	= 6.35 kilogrammes
28 lb.	= 1 QUARTER	= 12.7 "
100 lb.	= 1 CENTAL	= 45.3592 "
4 qrs.	= 1 HUNDRED-WEIGHT (cwt.)	= 50.8 "
8 st.	= 1 "	"
20 cwt.	= 1 TON	= 1016 "
	7,000 grains	= 1 lb.

LINEAL MEASURES.

1 INCH	= 25.4	millimètres
12 in.	= 1 FOOT	= 30.48 centimètres
3 ft.	= 1 YARD	= 91.44 "
5½ yds.	= 1 ROD, POLE or PERCH	= 5.03 mètres
4 poles	= 1 CHAIN	= 20.12 "
10 chains	= 1 FURLONG	= 210.17 "
8 furlongs or 1 MILE	= 1.609	1,760 yds. kilomètres

SQUARE MEASURES.

1 Sq. INCH	= 6.4516 sq. centimètres
144 sq. in.	= 1 Sq. FOOT = 9.2903 sq. décimètres
9 sq. ft.	= 1 Sq. YARD = 0.836 sq. mètres
30½ sq. yds.	= 1 Sq. POLE, ROD or PERCH = 25.29 "
40 sq. poles	= 1 ROOD = 10.117 acres
4 roods	= 1 ACRE = 0.4047 hectare
640 acres	= 1 Sq. MILE = 259 hectares (3,097,600 sq. yds.)

CUBIC MEASURES.

1 CUBIC INCH	= 16.387 cubic centimètres
1,728 cub. in.	= 1 CUBIC FOOT = 28.317 cubic décimètres
27 cub. ft.	= 1 CUBIC YARD = 0.76455 cubic mètre

MEASURES OF CAPACITY. (Dry.)

1 CUBIC INCH	= 16.387 cubic centimètres
8.665 cub. in.	= 1 GILL = 141.983 millilitres
4 gills	= 1 PINT = 0.568 litres
2 pints	= 1 QUART = 1.136 "
4 quarts	= 1 GALLON = 4.546 "
2 gallons	= 1 PECK = 9.092 "
4 pecks	= 1 BUSHEL = 36.368 "
8 bushels	= 1 QUARTER = 2.909 hectolitres

MEASURES OF CAPACITY. (Liquid.)

4 gills	= 1 pint	= 0.568 litres
2 pints	= 1 quart	= 1.136 "
4 quarts	= 1 gallon	= 4.546 "
31½ gallons	= 1 barrel	= 1.432 hectolitres
2 barrels	= 1 hogshead	= 2,864 "

APOTHECARIES' MEASURES.

WEIGHT.		
20 grains	= 1 scruple	
60 grains	= 3 scruples	= 1 drachm
480 grains	= 8 drachms	= 1 ounce

CAPACITY.

60 minims	= 1 fluid drachm
8 fluid drachms	= 1 fluid ounce

CIRCULAR MEASURES.

60 seconds	= 1 minute
60 minutes	= 1 degree
30 degrees	= 1 sign
12 signs	= 1 circle or circumference

TROY WEIGHT.

1 grain troy	= 0.0648 grammes
24 grains	= 1 pennyweight = 1.5552 "
20 dwt.	= 1 ounce = 31.1035 "
12 ounces	= 1 pound = 373.248 "

PAPER MEASURES.

WRITING.	
24 sheets	= 1 quire
20 quires	= 1 ream
PRINTING.	
516 sheets	= 1 ream
2 reams	= 1 bundle
5 bundles	= 1 bale

METRIC SYSTEM OF WEIGHTS AND MEASURES WITH BRITISH EQUIVALENTS

(See Page 10 for useful conversion table)

LINEAL MEASURES.

1,000 microns	= 1 MILLIMÈTRE = 0.039 in.
10 millimètres	= 1 CENTIMÈTRE = 0.393 "
10 centimètres	= 1 DÉCIMÈTRE = 3.937 "
100 "	= 1 MÈTRE = 39.371 "
10 mètres	= 1 DÉCAMÈTRE = 10.936 yds.
100 "	= 1 HECTOMÈTRE = 109.36 "
1,000 "	= 1 KILOMÈTRE = 0.621 miles
10 kilomètres	= 1 MYRIAMÈTRE = 6.213 "

MEASURES OF SURFACE.

1 Sq. CENTIMÈTRE	= 0.155 sq. in.
100 sq. centi-	= 1 Sq. DÉCIMÈTRE = 15.5 "
100 sq. déci-	= 1 Sq. MÈTRE OR = 1.196 "
100 sq. mètres	= 1 ARE = 119.60 sq. yds.
100 ares	= 1 HECTARE = 2.471 acres
100 hectares	= 1 Sq. KILOMÈTRE = 247.105 "
100 sq. kilo-	= 1 Sq. MYRIAMÈTRE = 38.55 "
mètres	sq. miles

EXPLANATION OF METRIC TERMS

LENGTH (Unit—Mètre):

Myriamètre	= 10,000 mètres
Kilomètre	= 1,000 "
Hectomètre	= 100 "
Décamètre	= 10 "
Mètre	= 1 mètre
Decimètre	= 1/10 "
Centimètre	= 1/100 "
Millimètre	= 1/1000 "
Micron	= 1/1000000 "

SURFACE (Unit—Square mètre):

Millimètre carré	= 1/1000000 square mètre
Centimètre "	= 1/10000 "
Decimètre "	= 1/100 "
Centiare	= 1 " "
Are	= 100 " "
Hectare	= 10,000 " "
Kilomètre carré	= 1,000,000 " "

VOLUME (Unit—Stère):

Décastère	= 100 cubic mètres
Stère or mètre cube	= 1 " mètre
Decimètre cube	= 1/1000 " "
Centimètre "	= 1/1000000 " "
Millimètre "	= 1/1000000000 " "

CUBIC MEASURES.

1 CUB. CENTI-	= 0.061 cub. in.
MÈTRE	
1,000 cub.	= 1 CUB. DÉCI-
centimètres	MÈTRE = 61.024 cub. in.
1,000 cub.	= 1 CUB. MÈTRE = 1.308 cub. yds.
décimètres	

MEASURES OF WEIGHT.

1 GRAMME	= 15.432 grains or 0.564 dr.
10 grammes	= 1 DÉCAGRAMME = 5.64 dr.
100 "	= 1 HECTOGRAMME = 3.527 oz.
1,000 "	= 1 KILOGRAMME = 2.204 lbs.
10 kilo-	= 1 MYRIAGRAMME = 22.046 "
grammes	
50 "	= 1 CENTNER = 110.231 "
100 "	= 1 QUINTAL = 1.968 cwt. or 220.462 lb.
1,000 "	= 1 TONNE = 0.9842 ton

MEASURES OF CAPACITY.

1 CENTILITRE	= 0.07 gill
10 centi-	= 1 DÉCILITRE = 0.175 pint
litres	
10 déci-	= 1 LITRE = 1.759 pint
litres	
10 litres	= 1 DÉCALITRE = 2.20 gals.
100 litres	= 1 HECTOLITRE = 22 gals. or 2.75 bushels

WEIGHT (Unit—Gramme):

Tonne	= 1,000,000 grammes
Quintal	= 100,000 "
Centner	= 50,000 "
Myriagramme	= 10,000 "
Kilogramme	= 1,000 "
Hectogramme	= 100 "
Decagramme	= 10 "
Gramme	= 1 gramme
Décigramme	= 1/10 "
Centigramme	= 1/100 "
Milligramme	= 1/1000 "
Microgramme	= 1/1000000 "

CAPACITY (Unit—Litre):

Kilolitre	= 1,000 litres
Hectolitre	= 100 "
Décalitre	= 10 "
Litre	= 1 litre
Décilitre	= 1/10 "
Centilitre	= 1/100 "
Millilitre	= 1/1000 "
Microlitre	= 1/1000000 "

FOREIGN TIME-TABLE

Twelve o'clock noon, Greenwich mean time, as compared with the clock in the following places.

PLACE	Local Time	Standard or National Time	PLACE	Local Time	Standard or National Time
Adelaide ...	H.M. 9 14 p.m.	H.M. 9 30 p.m.	New York ...	H.M. 7 4 a.m.	H.M. 7 0 a.m.
Athens ...	1 35 "	1 35 "	Newfoundland,		
Auckland, N.Z. ...	11 39 "	11 30 "	St. John's ...	8 29 "	8 0 "
Berlin ...	12 54 "	1 0 "	Panama ...	6 42 "	7 0 "
Bombay ...	4 51 "	5 30 "	Pekin ...	7 46 p.m.	8 0 p.m.
Brisbane ...	10 12 "	10 0 "	Perth, W. Australia	7 43 "	8 0 "
Buenos Ayres ...	8 6 a.m.	7 43 a.m.	Petrograd ...	2 1 "	2 1 "
Calcutta ...	5 53 p.m.	5 30 p.m.	Quebec ...	7 15 a.m.	7 0 a.m.
Cape Town ...	1 14 "	2 0 "	Rio de Janeiro ...	9 7 "	9 0 "
Chicago ...	6 10 a.m.	6 0 a.m.	Rome ...	12 50 p.m.	1 0 p.m.
Copenhagen ...	12 50 p.m.	1 0 p.m.	Rotterdam ...	12 18 "	12 20 "
Istanbul ...	1 56 "	2 0 "	San Francisco ...	3 50 a.m.	4 0 a.m.
Lisbon ...	11 23 a.m.	12 noon	Stockholm ...	1 12 p.m.	1 0 p.m.
Madras ...	5 21 p.m.	5 30 p.m.	Valparaiso ...	7 13 a.m.	7 0 a.m.
Madrid ...	11 45 a.m.	12 noon	Vancouver ...	3 38 "	4 0 "
Malta ...	12 58 p.m.	1 0 p.m.	Vienna ...	1 5 p.m.	1 0 p.m.
Melbourne ...	9 40 "	10 0 "	Washington ...	6 52 a.m.	7 0 a.m.
Montreal ...	7 6 a.m.	7 0 a.m.	Wellington, N.Z.	11 39 p.m.	11 30 p.m.
Moscow ...	2 30 p.m.	2 1 p.m.	Winnipeg ...	5 32 a.m.	6 0 a.m.
New Orleans ...	6 0 a.m.	6 0 a.m.	Yokohama ...	9 18 p.m.	9 0 p.m.

In the United States and Canada five different times have been arranged by the Railway Companies. *Atlantic Time* is that of the 60th meridian, *Eastern* that of the 75th, *Central* that of the 90th, *Mountain* that of the 105th and *Pacific* that of the 120th meridian west of Greenwich. But the boundaries actually in use do not follow the above meridians exactly. Europe has three time systems: the *Western* taking its time from Greenwich, the *Central*, or *Mid-European*, varying by one hour, and the *Oriental*, or *East-European*, varying by two hours. Australasia has adopted a Standard Zone time, ranging from 8 hours fast in West Australia to 11½ hours fast in New Zealand.

CONVERSION TABLE

<p>To Convert</p> <p>mils to millimetres ... Multiply by .025</p> <p>inches to centimetres ... 2.54</p> <p>yards to metres9</p> <p>miles to kilometres ... 1.6</p> <p>sq. inches to sq. cm. ... 6.45</p> <p>cub. inches to cub. cms. ... 16.4</p> <p>cubic ft. to cubic metres03</p> <p>cubic yds. to cubic metres76</p> <p>grains to grammes065</p> <p>lbs. to kilogrammes45</p> <p>gallons to litres ... 4.5</p>	<p>To Convert</p> <p>millimetres to mils ... Multiply by 40</p> <p>centimetres to inches4</p> <p>metres to yards ... 1.1</p> <p>kilometres to miles62</p> <p>sq. cms. to sq. inches155</p> <p>cub. cms. to cub. inches06</p> <p>cubic metres to cubic feet ... 35.3</p> <p>cubic metres to cubic yds. ... 1.31</p> <p>grammes to grains ... 15.4</p> <p>kilogrammes to lbs. ... 2.2</p> <p>litres to gallons22</p>
---	---

Water.

<p>To Convert</p> <p>cubic ft. to lbs. ... Multiply by 62.27</p> <p>cubic ft. to gallons ... 6.2</p> <p>gallons to lbs. ... 10.0</p> <p>gallons to litres ... 4.5</p> <p>head of water (ft.) to lbs. per sq. in.43</p>	<p>To Convert</p> <p>lbs. to cubic ft. ... Multiply by .016</p> <p>gallons to cubic feet16</p> <p>lbs. to gallons1</p> <p>litres to gallons22</p> <p>lbs. per sq. in. to head of water (ft.) ... 2.33</p>
---	--

A pint of water weighs a pound and a quarter.

FOREIGN MONEY (at par)

Place	Method of Quoting	Mint Par of Exchange	Place	Method of Quoting	Mint Par of Exchange
New York	\$ to £	4.86 ² / ₁₀	Kovno	Lit. to £	48.66
Montreal	\$ to £	4.86 ² / ₁₀	Sofia	Lev. to £	673.659
Paris	Fr. to £	124.21	Reval	E. Kr. to £	18.159
Brussels	Bel. to £	35.00	Oslo	Kr. to £	18.159
Milan	Lire to £	92.46	Stockholm	Kr. to £	18.159
Berne	Fr. to £	25.22 ¹ / ₂	Copenhagen	Kr. to £	18.159
Athens	Dr. to £	375	Alexandria	Pst. to £	97 ¹ / ₂
Helsingfors	M to £	193.23	Bombay	Per rup.	18d.
Madrid	Pts. to £	25.22 ¹ / ₂	Calcutta	Per rup.	18d.
Lisbon	Escs. to £	110	Madras	Per rup.	18d.
Amsterdam	Fl. to £	12.107	Kobe	Per yen	24.58d.
Berlin	M to £	20.43	Singapore	Per dol.	2/4
Vienna	Sch. to £	34.58 ¹ / ₂	Batavia	Fl. to £	12.107
Budapest	Pen. to £	27.82	Manila	Per dol.	24.666d.
Prague	Kr. to £	\$164.25	Buenos Aires	Per dol.	47.619d.
Warsaw	Zloty to £	43.38	Rio de Janeiro	\$ to Mil.	5.89d.
Riga	Lats to £	25.22 ¹ / ₂	Valparaiso	\$ to £	40
Bucharest	Lei to £	813.6	Montevideo	Per dol.	51d.
Istanbul	Pst. to £	110	Lima	£E to £P	17.38
Belgrade	Din to £	25.22 ¹ / ₂	Mexico	Pesos to £	9.76

In the Table below, the figures after the decimal point are sub-units, i.e., centimes, öre, &c.

British Money into Foreign.

Brit. Money	In Dolls.	In Francs	In Marks.	In Krön'r	In Florins
1d	0.02	0.10	0.08	0.08	0.05
2d	0.04	0.21	0.17	0.15	0.10
3d	0.06	0.31	0.25	0.23	0.15
4d	0.08	0.42	0.34	0.30	0.20
5d	0.10	0.52	0.42	0.38	0.25
6d	0.12	0.63	0.51	0.45	0.30
7d	0.14	0.73	0.59	0.53	0.35
8d	0.16	0.84	0.68	0.61	0.41
9d	0.18	0.94	0.76	0.68	0.46
10d	0.20	1.05	0.85	0.76	0.51
11d	0.22	1.15	0.93	0.83	0.56
1/-	0.24	1.26	1.02	0.91	0.61
2/-	0.49	2.52	2.04	1.82	1.22
2/6	0.61	3.15	2.55	2.27	1.52
3/-	0.73	3.78	3.06	2.72	1.82
4/-	0.97	5.04	4.08	3.63	2.43
5/-	1.22	6.30	5.10	4.54	3.04
6/-	1.46	7.56	6.12	5.45	3.65
7/-	1.70	8.82	7.14	6.35	4.26
7/6	1.83	9.45	7.65	6.81	4.56
8/-	1.95	10.08	8.16	7.26	4.86
9/-	2.19	11.34	9.18	8.17	5.47
10/-	2.44	12.60	10.20	9.08	6.08
11/-	2.68	13.86	11.22	9.98	6.69
12/-	2.92	15.12	12.24	10.89	7.30
13/-	3.17	16.38	13.26	11.80	7.90
14/-	3.41	17.64	14.28	12.71	8.51
15/-	3.65	18.90	15.30	13.61	9.12
16/-	3.90	20.16	16.32	14.52	9.73
17/-	4.14	21.42	17.34	15.43	10.34
18/-	4.38	22.68	18.36	16.34	10.94
19/-	4.63	23.94	19.38	17.24	11.55
£1	4.87	25.20	20.40	18.15	12.16
£2	9.74	50.40	40.80	36.30	24.32
£3	14.61	75.60	61.20	54.45	36.48
£4	19.48	100.80	81.60	72.60	48.64
£5	24.35	126.00	102.00	90.75	60.80
£6	29.22	151.20	122.40	108.90	72.96
£7	34.09	176.40	142.80	127.05	85.12
£8	38.96	201.60	163.20	145.20	97.28
£9	43.83	226.80	183.60	163.35	109.44
£10	48.70	252.00	204.00	181.50	121.60

Foreign Money into British.

Foreign Money	Dolls. s. d.	Francs s. d.	Marks. s. d.	Krön'r s. d.	Florins s. d.
0.10	0 5	0 1	0 1½	0 1½	0 2
0.20	0 9½	0 2	0 2½	0 2½	0 4
0.25	1 0½	0 2½	0 3	0 3½	0 5
0.30	1 2½	0 3	0 3½	0 4	0 6
0.40	1 7½	0 4	0 4½	0 5½	0 8
0.50	2 0½	0 4½	0 5	0 6½	0 9½
0.60	2 5½	0 5½	0 7	0 8	0 11½
0.70	2 10½	0 6½	0 8½	0 9½	1 1
0.75	3 1	0 7½	0 9½	0 10½	1 2½
0.80	3 3½	0 8½	0 10½	1 0	1 3½
0.90	3 8½	0 9½	0 11½	1 1	1 5½
1.00	4 1½	0 10½	0 12½	1 1½	1 7½
2.00	8 2½	1 7	1 11½	2 2½	3 3½
2.50	10 3½	1 11½	2 5½	2 9	4 1½
3.00	12 3½	2 4½	2 11½	3 3½	4 11½
4.00	16 5½	3 2	3 11	4 5	6 7
5.00	20 6½	3 11½	4 10½	5 8	8 2½
6.00	24 7½	4 9½	5 10½	6 7½	9 10½
7.00	28 9	5 6½	6 10½	7 8½	11 6½
7.50	30 9½	5 11½	7 4½	8 3½	12 4
8.00	32 10½	6 4½	7 10	8 9½	13 2
9.00	36 11½	7 1½	8 10	9 11	14 9½
10.0	41 0½	7 11½	9 9½	11 0½	16 5½
11.0	45 2	8 8½	10 9½	12 1½	18 1
12.0	49 3½	9 6½	11 9½	13 2½	19 8½
13.0	53 4½	10 3½	12 9	14 4	21 4½
14.0	57 6	11 1½	13 8½	15 5	23 0½
15.0	61 7½	11 10½	14 8½	16 8½	24 8
16.0	65 8½	12 8½	15 8½	17 7½	26 3½
17.0	69 9½	13 6	16 8	18 8	27 11½
18.0	73 11	14 3½	17 7½	19 10	29 7½
19.0	78 0½	15 1	18 7½	20 11½	31 3
20.0	82 1½	15 10½	19 7½	22 0½	32 10½
25.0	102 8	19 10	24 6	27 6½	41 1½
30.0	123 2½	23 9½	29 5	33 0½	49 9½
40.0	164 3½	31 9	39 2½	44 1	65 9½
50.0	205 4	39 8½	49 0½	55 1½	82 2½
60.0	246 5	47 7½	58 10	66 1½	98 7½
70.0	287 5½	55 6½	68 7½	77 1½	115 1½
80.0	328 6½	63 6	78 5½	88 1½	131 7
90.0	369 7½	71 5½	88 2½	99 2	148 0½
100	410 8½	79 4½	98 0½	110 2½	164 5½

GENERAL INFORMATION

FINANCE (1909-10) ACT, 1910.—APRIL 29, 1910.
 REVENUE ACT, 1911.—MARCH 31, 1911.
 FINANCE ACT, 1920.—SEPTEMBER 1, 1920.

A TABLE OF AD VALOREM STAMP DUTIES

As issued by—
 INLAND REVENUE,
 SOMERSET HOUSE, LONDON.

1	2	3	4	5	6	7	8	9	10
Amount not exceeding	Bill or Promissory Note.	Transfer of Stock or Marketable Securities.	Conveyance or Transfer other than Column 3.	Mortgage, Bond, Covenant, &c.	Settlement on Marriage.	Premium on Lease.	Rent.—Term not exceeding 35 years or indefinite.	Rent.—Term exceeding 35 years but not exceeding 100 years.	Rent.—Term exceeding 100 years.
£	£ s. d.	£ s. d.	£ s. d.	£ s. d.	£ s. d.	£ s. d.	£ s. d.	£ s. d.	£ s. d.
5	0 0 0	0 1 0	0 0 0	0 0 0	0 0 0	0 0 0	0 0 0	0 0 0	0 0 0
10	0 0 0	0 2 0	0 1 0	0 0 0	0 0 0	0 0 0	0 0 0	0 0 0	0 0 0
15	0 0 0	0 3 0	0 2 0	0 0 0	0 0 0	0 0 0	0 0 0	0 0 0	0 0 0
20	0 0 0	0 4 0	0 3 0	0 0 0	0 0 0	0 0 0	0 0 0	0 0 0	0 0 0
25	0 0 0	0 5 0	0 4 0	0 0 0	0 0 0	0 0 0	0 0 0	0 0 0	0 0 0
30	0 0 0	0 6 0	0 5 0	0 0 0	0 0 0	0 0 0	0 0 0	0 0 0	0 0 0
35	0 0 0	0 7 0	0 6 0	0 0 0	0 0 0	0 0 0	0 0 0	0 0 0	0 0 0
40	0 0 0	0 8 0	0 7 0	0 0 0	0 0 0	0 0 0	0 0 0	0 0 0	0 0 0
45	0 0 0	0 9 0	0 8 0	0 0 0	0 0 0	0 0 0	0 0 0	0 0 0	0 0 0
50	0 0 0	1 0 0	0 9 0	0 0 0	0 0 0	0 0 0	0 0 0	0 0 0	0 0 0
55	0 0 0	1 1 0	1 0 0	0 0 0	0 0 0	0 0 0	0 0 0	0 0 0	0 0 0
60	0 0 0	1 2 0	1 1 0	0 0 0	0 0 0	0 0 0	0 0 0	0 0 0	0 0 0
65	0 0 0	1 3 0	1 2 0	0 0 0	0 0 0	0 0 0	0 0 0	0 0 0	0 0 0
70	0 0 0	1 4 0	1 3 0	0 0 0	0 0 0	0 0 0	0 0 0	0 0 0	0 0 0
75	0 0 0	1 5 0	1 4 0	0 0 0	0 0 0	0 0 0	0 0 0	0 0 0	0 0 0
80	0 0 0	1 6 0	1 5 0	0 0 0	0 0 0	0 0 0	0 0 0	0 0 0	0 0 0
85	0 0 0	1 7 0	1 6 0	0 0 0	0 0 0	0 0 0	0 0 0	0 0 0	0 0 0
90	0 0 0	1 8 0	1 7 0	0 0 0	0 0 0	0 0 0	0 0 0	0 0 0	0 0 0
95	0 0 0	1 9 0	1 8 0	0 0 0	0 0 0	0 0 0	0 0 0	0 0 0	0 0 0
1,000	0 10 0	10 0 0	10 0 0	0 10 0	0 10 0	0 10 0	0 10 0	0 10 0	0 10 0
Also 1,000	0 10 0	10 0 0	10 0 0	0 10 0	0 10 0	0 10 0	0 10 0	0 10 0	0 10 0

*The above-mentioned rates of duty for conveyances from £5 to £500 apply only when the instrument contains a statement certifying that the transaction thereby effected does not form part of a larger transaction in respect of which the amount or value, or the aggregate amount or value of the consideration, exceeds £500.
 In the absence of such a statement the duty chargeable is double that stated above.
 Settlements (when marriage is not the consideration) which operate also as Conveyances or Transfers, are chargeable with duty as Conveyances or Transfers, and not as Settlements.

†The above-mentioned rates of duty for premiums on Leases, £5 to £500 (Column 7) apply only when the instrument contains a statement certifying that the transaction thereby effected does not form part of a larger transaction or a series of transactions in respect of which the amount or value, or the aggregate amount or value of the consideration other than rent, exceeds £500.
 In the absence of such a statement the duty chargeable is double that stated above. The double duty on the premium is also chargeable in all cases where the rent exceeds the sum of £20 a year. (Revenue Act, 1911, Section 12.)

PUBLIC AND GOVERNMENT OFFICES

- Ministry of Agriculture and Fisheries
- Department for Agriculture for Scotland
- The Government Chemist (Government Laboratory)
- Dominions and Colonial Offices
- Crown Agents for the Colonies
- Board of Customs and Excise
- Board of Education
- Scottish Education Department
- Central Electricity Board
- Exports Credits Guarantee Department
- Foreign Office
- Forestry Commission
- Friendly Societies' Registry
- Scottish Registry of Friendly Societies
- Ministry of Health
- Department of Health for Scotland
- Home Office
- Prisons Department for Scotland
- India Office
- Board of Inland Revenue
- Ministry of Labour
- H.M. Land Registry
- Lord Great Chamberlain's Office
- Metropolitan Water Board
- National Physical Laboratory
- Department of Overseas Trade
- Passport Office
- Patent Office
- Ministry of Pensions
- Port of London Authority
- Public Record Office
- Public Trustee Office
- Scottish Office
- H.M. Stationery Office
- Board of Trade
- H.M. Office of Works
- 10 Whitehall Place, S.W.1; 43 Parliament Street, S.W.1; 7 Old Bailey, E.C.4
- Edinburgh
- 13 Clement's Inn Passage, W.C.2
- Downing Street, S.W.1
- 4 Millbank, Westminster, S.W.1
- Lower Thames Street, E.C.3
- King Charles Street, S.W.1
- Dover House, Whitehall, London; and 14 Queen Street, Edinburgh
- Trafalgar Bldgs., 1 Charing Cross, W.C.2
- 9 St. Clements Lane, E.C.4
- Downing Street, S.W.1
- 9 Savile Row, W.1
- 17 North Audley Street, W.1
- 19 Heriot Row, Edinburgh
- Whitehall, S.W.1
- 125 George Street; 121a Princes Street, Edinburgh
- Whitehall, S.W.1
- 11 Rutland Square, Edinburgh
- Whitehall, S.W.1
- Somerset House, W.C.2
- Montagu House, Whitehall, S.W.1
- Lincoln's Inn Fields, W.C.2
- Royal Court, House of Lords, S.W.1
- 173 Rosebery Avenue, E.C.1
- Teddington, Middlesex
- 35 Old Queen Street, S.W.1
- 1 Queen Anne's Gate Buildings, S.W.1
- 25 Southampton Buildings, W.C.2
- 18 Great Smith Street, S.W.1
- Trinity Square, E.C.3
- Chancery Lane, W.C.2
- Sardinia Street, Kingsway, W.C.2
- Dover House, Whitehall, London, and 14 Queen Street, Edinburgh
- Princes Street, S.W.1
- Great George Street, S.W.1
- Storey's Gate, S.W.1.

LONDON OFFICES OF BRITISH DOMINIONS, INDIA, &c.

- DOMINION OF CANADA: Canada House, Trafalgar Sq., S.W.1.
- Alberta: 125 Pall Mall, S.W.1.
- British Columbia: 1 Regent Street, S.W.1.
- Nova Scotia: 2 Cockspar Street, S.W.1.
- Ontario: 163 Strand, W.C.2.
- Quebec: 2 Cockspar Street, S.W.1.
- AUSTRALIAN COMMONWEALTH: Australia House, Strand, W.C.2.
- New South Wales: Australia House, Strand, W.C.2.
- Queensland: 409 Strand, W.C.2.
- South Australia: Australia House, Strand, W.C.2.
- Tasmania: Australia House, Strand, W.C.2.
- Victoria: Melbourne Place, Strand, W.C.2.
- Western Australia: Savoy House, Strand, W.C.2.
- NEW ZEALAND: 415 Strand, W.C.2.
- UNION OF SOUTH AFRICA: South Africa House, Trafalgar Sq., W.C.2.
- NEWFOUNDLAND: 58 Victoria Street, S.W.1.
- INDIA: India House, Aldwych, W.C.2.
- IRISH FREE STATE: York House, 33 Regent Street, S.W.1.
- SOUTHERN RHODESIA: Crown House, Aldwych, W.C.2.
- BRITISH NORTH BORNEO: 17 St. Helen's Place, E.C.3.
- MALAY STATES: 57, Charing Cross, S.W.1.
- SARAWAK: Millbank House, S.W.1.
- SUDAN GOVERNMENT: Wellington House, Buckingham Gate, S.W.1.
- COLONIES AND PROTECTORATES: 4 Millbank, Westminster, S.W.1.

TRADE COMMISSIONERS IN BRITISH DOMINIONS, INDIA, &c.

- CANADA: Montreal (1,111 Beaver Hall Hill, Montreal); Toronto (901-902 Bank of Hamilton Building, 61-67 Yonge Street, Toronto); Vancouver (850 Hastings Street West, Vancouver); Winnipeg (703 Royal Bank Building, Winnipeg).
- NEWFOUNDLAND: (see Canada, —Montreal)
- AUSTRALIA: Sydney (Herald Building, Pitt Street, Sydney); Melbourne (Henty House, Little Collins Street, Melbourne, C.1).
- NEW ZEALAND: Wellington (P.O. Box 369) T. & G. Building, Grey Street, Wellington.
- SOUTH AFRICA: Capetown (P.O. Box 1346) Norwich Union Buildings, St. George's Street, Cape Town.
- SOUTH AFRICA: Johannesburg (P.O. Box 839) 88 Fox Street, Johannesburg.
- IRISH FREE STATE: Dublin (69 Merrion Square, Dublin).
- INDIA AND CEYLON: Calcutta (P.O. Box 683) Fairlie House, Fairlie Place, Calcutta; Bombay (P.O. Box 815) Exchange Bldgs., Wittet Road, Ballard Estate, Bombay).
- EAST AFRICA: Nairobi (P.O. Box 220) Memorial Hall, Sixth Avenue, Nairobi, Kenya.
- BRIT. WEST INDIES: Trinidad (P.O. Box 225) 5 Abercromby Street, Port of Spain, Trinidad).
- MALAYA: Singapore (P.O. Box 608) Singapore, Straits Settlements).

EMBASSIES & LEGATIONS

Embassy (E) Legation (L) or Consulate General (C.-G.)

COUNTRY	BRITISH (Abroad)	FOREIGN (In London)
ABYSSINIA	(C.-G.) Addis Ababa	None
AFGHANISTAN	(L) Kabul	(L) 31 Princes Gate, S.W.7
ALBANIA	(C.-G.) Rruga Tomorica, Durazzo	(L) 36 Egerton Gardens, S.W.3
ARGENTINA	(E) 314 Reconquista, Buenos Aires	(C.-G.) 119 Finsbury Pavement, E.C.2
AUSTRIA	(C.-G.) Metternichgasse 6, Vienna	(E) 11 Lowndes Square, S.W.1
BELGIUM	(E) 2 Rue de Spa, Brussels	(C.-G.) 7 Gower Street, W.C.1
BOLIVIA	(C.-G.) 701 Avenida Arce, La Paz	(L) 18 Belgrave Square, S.W.1
BRAZIL	(E) 71 Rua Real Grandeza, Rio de Janeiro	(E) 103 Eaton Square, S.W.1. Passports & Consular enquiries, 10 Belgrave Place, S.W.1
BULGARIA	(L) Boulevard Ferdinand 73, Sofia	(C.-G.) 16 Grosvenor Place, S.W.1
CHILE	(E) Avenida Vicuña Mackenna 152, Santiago	(E) 19 Upper Brook Street, W.1
CHINA	(L) Peking	(C.-G.) Aldwych House, W.C.2
COLOMBIA	(C.-G.) Apartado de Correo No. 17, Bogota	(L) 24 Queen's Gate Gardens, S.W.7
COSTA RICA	See Panama	(E) Chancery, 3, Queensberry Place, S.W.7
CUBA	(C.-G.) San Pedro No. 4, Havana	(C) 3 Hamilton Place, Park Lane, W.1
CZECHOSLAVAKIA	(C.-G.) Thunovska 12, Prague	(L) 76, Victoria Street, S.W.1
DENMARK	(L) Bredgade 26, Copenhagen	(L) 49 Portland Place, W.1
DOMINICA	(L) 94 Calle Arzobispo Merino, Santo Domingo	(C.-G.) 49 Portland Place, W.1
ECUADOR	See Peru	(C.-G.) Sicilian House, Sicilian Avenue, W.C.1
EGYPT	(L) Kasr el Doubara, Cairo	(C.-G.) 33-36 King William Street, E.C.4
ESTONIA	(L) Lai Tanav 17, Tallinn (Reval)	(L) 30 York Terrace, Regents Park, N.W.1
FINLAND	(C.-G.) Norra Kajen, 4, Helsinki	(C) 329 High Holborn, W.C.1
FRANCE	(E) 39 Faubourg St. Honoré, Paris	(L) 8 Grosvenor Place, S.W.1
GERMANY	(E) 70 Wilhelmstrasse, Berlin	(C) 18 Bedford Square, W.C.1
GREECE	(L) 8 Odos Dragatsaniou, Athens	(L) 29 Pont Street, S.W.1
GUATEMALA	(C.-G.) 8A Calle Poniente, No. 35, Guatemala	(C.-G.) 7 Norfolk Street, W.C.2
HAITI	(L) Place Geffrard, Port au Prince	(C.-G.) 67 Eaton Place, S.W.1
HOLLAND	(L) 12, Hooge Westeinde, The Hague	(C.-G.) 23 College Hill, Cannon Street, E.C.4
HONDURAS	See Guatemala	(L) 75 South Audley Street, W.1
HUNGARY	(C.-G.) Verboczy Utcza 1, Budapest	(C) 26 South Street, W.1
IRAQ	(E) British Embassy, Baghdad	(C.-G.) 167 Queen's Gate, S.W.7
ITALY	(E) 84 Via Venti Settembre, Rome	(L) 2 Moreton Gardens, S.W.5
JAPAN	(E) 1 Goban-cho, Kojimachi-Ku, Tokyo	(C) 103 Cannon Street, E.C.4
LATVIA	(L) 71 Valdemara iela, Riga	(C.-G.) 51 Bedford Square, W.C.1
LIBERIA	(L) Monrovia	(E) 9 Carlton House Terrace, S.W.1 (inc. Consular and Passport Department)
LITHUANIA	(L) Keistuchia gatve, 19, Kaunas	(C.-G.) 51 Upper Brook Street, W.1
LUXEMBURG	See Belgium	(C.-G.) 131 Gower Street, W.C.1
MEXICO	(L) Colonia de Cuauhtemoc, Mexico	(C.-G.) 11 Queen Victoria Street, E.C.4
NICARAGUA	See Guatemala	(C) 4 Denmark Street, W.C.2
NORWAY	(L) Drammeneveien, 79, Oslo	(L) 21 Portman Square, W.1
PANAMA	(C.-G.) Panama	(C.-G.) 28 Langham Street, W.1
PARAGUAY	See Argentina	(C.-G.) 15 Union Court, E.C.2
PERSIA	(C.-G.) Tehran	(L) 75 Chester Square, S.W.1
PERU	(L) Lima	(L) 22 Queen's Gate, S.W.7
POLAND	(E) 18 Nowy Swiat, Warsaw	(E) 4 Grosvenor Square, W.1
PORTUGAL	(E) 63 Rua Francisco de Borja, Lisbon	(C.-G.) 68 Portland Place, W.1
ROUMANIA	(L) 24 Strada Jules Michelet, Bucharest	(E) 10 Grosvenor Square, W.1
RUSSIA	(E) Sofiskaya Naberezhnaya 14, Moscow	(C.-G.) 1 Broad Street Place, E.C.2
SALVADOR	See Guatemala	(L) 87 Eaton Place, S.W.1
SIAM	(L) Bangkok	(C) 10 Idol Lane, E.C.3
SPAIN	(E) 16 Calle Fernando el Santo, Madrid	(L) 10 Palace Gate, W.8
SWEDEN	(L) Laboratoriegaten 8, Stockholm	(L) 48 Belgrave Square, S.W.1
SWITZERLAND	(L) 48 Thunstrasse, Berne	(C.-G.) 8 Halkin Street, S.W.1
TURKEY	(E) Angora	(L) 11 Queen Victoria Street, E.C.4
UNITED STATES	(E) Massachusetts Av., Washington, D.C.	(L) 21 Cockspur Street, S.W.1
URUGUAY	(C.-G.) 1282 Calle Treinta y Tres, Monte Video	(C.-G.) 36 King Street, Cheapside, E.C.2
VENEZUELA	(L) Quinta Prospero El Paraiso, Caracas	(C.-G.) 232 Finsbury Pavement House, E.C.2
YUGOSLAVIA	(L) Zrinskoga ulica 44, Belgrade	(C.-G.) 12 Russell Square, W.C.1
		(L) 10 Prince's Gate, S.W.1
		(L) 145 Sloane Street, S.W.1
		(C.-G.) 145 Sloane Street, S.W.1
		(E) 47 Portland Place, W.1
		(C.-G.) 2 Upper Montague Street, W.C.1
		(E) 11 Belgrave Square, S.W.1
		(C.-G.) 40 Woburn Square, W.C.1
		(L) 4 Cromwell Place, S.W.7
		(E) 13 Kensington Palace Gardens, W.2
		(C.-G.) 3 Rosary Gardens, South Kensington, S.W.7
		(C.-G.) 7 Union Court, E.C.2
		(L) 23 Ashburn Place, S.W.7
		(E) 24 Belgrave Square, S.W.1
		(C.-G.) 20 Gordon Square, W.C.1
		(L) 27 Portland Place, W.1
		(C.-G.) 329 High Holborn, W.C.1
		(L) 18 Montagu Place, W.1
		(E) 69 Portland Place, W.1
		(C) 10 Lower Sloane Street, S.W.1
		(E) 4 Grosvenor Gardens, S.W.1
		(C.-G.) 18 Cavendish Square, W.1
		(L) 53 Harrington Gardens, S.W.7
		(C.-G.) 55 Harrington Gardens, S.W.7
		(L) 50 Pall Mall, S.W.1
		(L) 195 Queen's Gate, S.W.7

GENERAL INFORMATION

JANUARY

JULY

FEBRUARY

AUGUST

MARCH

SEPTEMBER

APRIL

OCTOBER

MAY

NOVEMBER

JUNE

DECEMBER

JANUARY

JULY

FEBRUARY

AUGUST

MARCH

SEPTEMBER

APRIL

OCTOBER

MAY

NOVEMBER

JUNE

DECEMBER

GENERAL
INFORMATION

JANILADY
JULY

FERRIARY

MARCH

APRIL

MAY

JUNE